

**IMPORTANT!**

This Guide refers to the following Products:



**F1DS102P**  
PS/2 Only



**F1DS102T**  
PS/2 & USB

**SOHO KVM Firmware Update Instructions**

Please read the following carefully;

**Synopsis:**

This guide will assist you in updating the firmware of your Belkin OmniView SOHO KVM Switch.

Please be advised that firmware updates tend to be to resolve specific issues and if there is any doubt if the firmware will resolve your issue you should check with Technical Support.

**Requirements:**

To perform the Firmware Upgrade successfully you will need the following equipment;

- SOHO KVM
- 9 V DC 600mA KVM Power Supply (optional)
- RJ45-DB25 Flash Update Cable (supplied)
- PC with Win 98, ME,2000 or XP and Parallel Port
- Firmware Update File
- NTPDA Update
- 1 KVM Cable Kit (to connect to PC)

You will also need to ensure that any Firewall or Anti-Virus Software is disabled on the Computer from which you will be upgrading the Firmware.

## SOHO KVM Firmware Update Instructions

### Step 1

Before proceeding with the Firmware Update you will need to ensure that the Computer being used for the update process is ready.

If you are running Windows 2000 or XP you will need to install an **NT Direct Port Access Update** prior to running the Flash Update. The **NTPDA.zip** file Update Utility can be downloaded from the same location as the Firmware Update files. Once downloaded, the file should be unzipped and the 'Setup.exe' file run in order to install.



SETUP.EXE  
Setup Launcher ( SETUP.EXE)  
InstallShield Corporation, Inc.

You will be prompted to reboot your system to complete the process.

### Step 2

The KVM will need to be powered in order to perform the Flash Update process. As the KVM did not come with a Power Supply Unit (9V DC 600mA) it will need to be connected to at least one computer in order to receive power.

Should you have a suitable power supply then this should be plugged in instead of a Computer.

### Step 3

The KVM Unit itself now needs to be set to Flash Update mode. To do this simply locate the 'Flash' button on the interior of the KVM unit and depress it.



## Step 4

Plug the supplied Firmware Update Cable in to the (DB25) Parallel Port of a stand-alone Computer (i.e. one that is not currently connected to and controlled by the KVM) and connect the other end of the Cable into the (RJ45) Firmware Upgrade Port of the KVM.



## Step 5

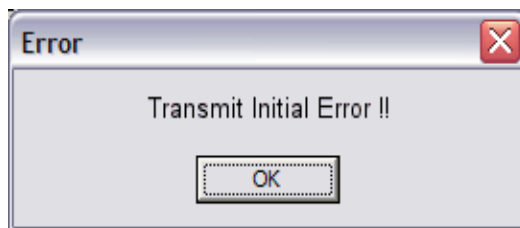
Now that everything is setup the KVM can be flash upgraded. Double click the Icon of the Firmware Update File that you downloaded.



F1D5102P\_T(No Beep).exe  
KVM MFC Application  
BELKIN Components

Once open, click on the  button in the KVM Firmware Update Window.

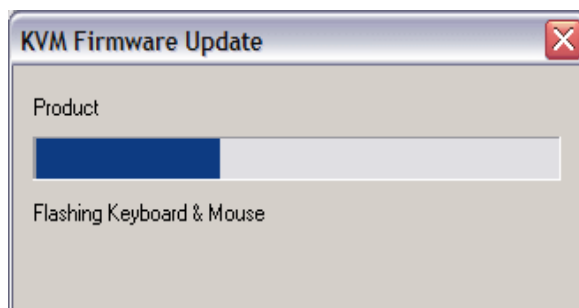
Should you receive the following Error Message then it means that the data cannot be sent to the KVM in order to Flash Update it.



To resolve this click 'OK' and 'OK' again. Unplug Power from the KVM, then unplug the Flash Update Cable. Wait 10 seconds. Now plug the Flash Update Cable in first, followed by the Power Cable (or KVM Cable Kit). Repeat Step 4.

## Step 5

Providing the Flash Upgrade is being performed successfully, you should see a Window with a Progress Bar similar to that shown below.



## Step 6

Once the Firmware Upgrade has been successfully completed an extra Window will appear with a message to this effect. Simply close this Window.

Next, unplug both the Flash Update Cable from both KVM and the Computer, followed by the Power Cable or KVM Cable Kit (providing power) to the KVM.

The 'Flash' button should then be pressed so that it is in its highest position thus returning the KVM to a state of normal usage.

The KVM can now be powered back on by connecting the Power Cable back to the Power Jack or KVM Cable Kit to one of the Computers and the KVM.

The Unit should beep once to indicate power has been added. Once successfully powered any additional Computers can be re-connected to the KVM.

**N.B.**

Should the unit emit a persistent beep after the Flash Update process then it is indicating that the Firmware has been in some way corrupted. The unit should be re-flashed using an original Firmware with KVM set again to 'Flash' mode.