

USING THE WEB-BASED ADVANCED USER INTERFACE

Updating Firmware

From time to time, Belkin may release new versions of the Router's firmware. Firmware updates contain feature improvements and fixes to problems that may have existed. When Belkin releases new firmware, you can download the firmware from the Belkin update website and update your Router's firmware to the latest version.

Firmware Update

From time to time, Belkin may release new versions of the Router's firmware. Firmware updates contain improvements and fixes to problems that may have existed. Click the link below to see if there is a new firmware update available for this Router.

NOTE: Please backup your current settings before updating to a new version of firmware. [Click Here](#) to go to the Save/Backup current settings page.

Check For New Firmware Version

Check Firmware

Update Firmware >

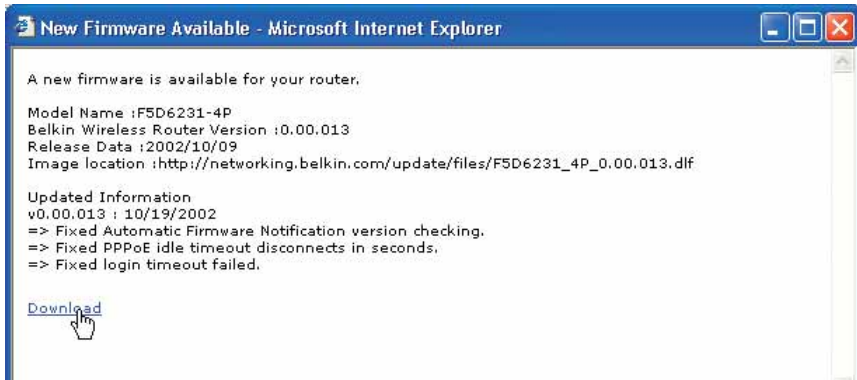
Checking for a New Version of Firmware

The "Check Firmware" (1) button allows you to instantly check for a new version of firmware. When you click the button, a new browser window will appear informing you that either no new firmware is available or that there is a new version available. If a new version is available, you will have the option to download it.

Downloading a New Version of Firmware

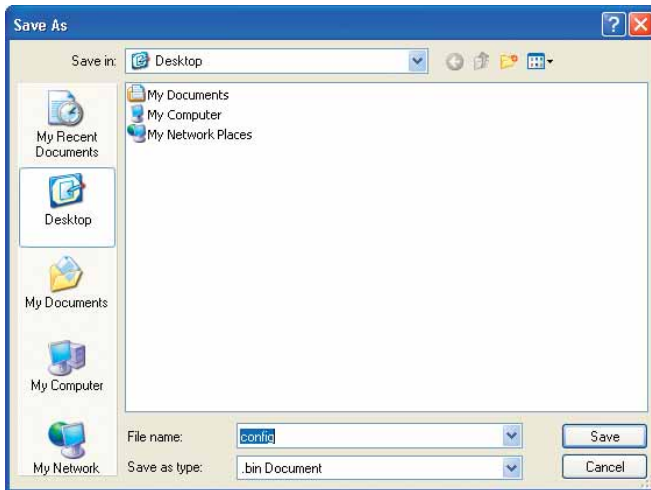
If you click the "Check Firmware" button and a new version of firmware is available, you will see a screen such as the following.

1. To download the new version of firmware, click "Download".

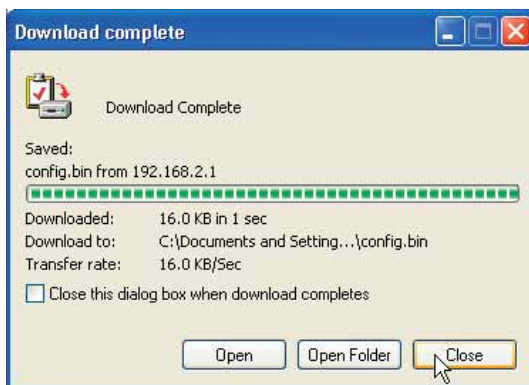


USING THE WEB-BASED ADVANCED USER INTERFACE

2. A window will open that allows you to select the location where you want to save the firmware file. Select a location. You can name the file anything you want, or use the default name. Be sure to locate the file in a place where you can locate it yourself later. When you have selected the location, click “Save”.



3. When the save is complete, you will see the following window. Click “Close”.

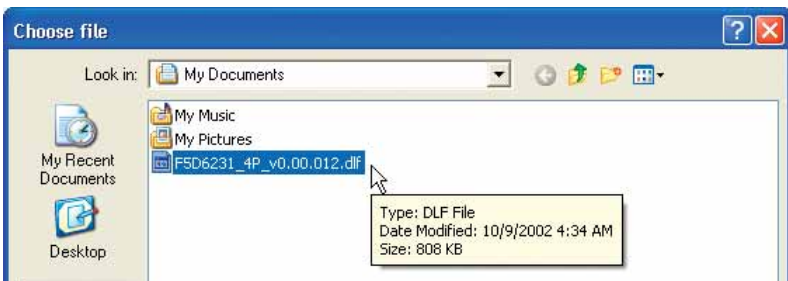


The download of the firmware is complete. To update the firmware, follow the next steps in “Updating the Router’s Firmware”.

USING THE WEB-BASED ADVANCED USER INTERFACE

Updating the Router's Firmware

1. In the "Firmware Update" page, click "Browse" (2). A window will open that allows you to select the location of the firmware update file. All firmware files end with a ".dlf".



2. Browse to the firmware file you downloaded. Select the file by double-clicking on the file name.
3. The "Update Firmware" box will now display the location and name of the firmware file you just selected. Click "Update".

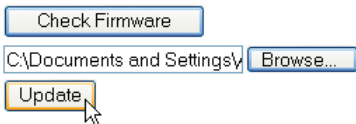
Firmware Update

From time to time, Belkin may release new versions of the Router's firmware. Firmware updates contain improvements and fixes to problems that may have existed. Click the link below to see if there is a new firmware update available for this Router.

NOTE: Please backup your current settings before updating to a new version of firmware. [Click Here](#) to go to the Save/Backup current settings page.

Check For New Firmware Version

Update Firmware >

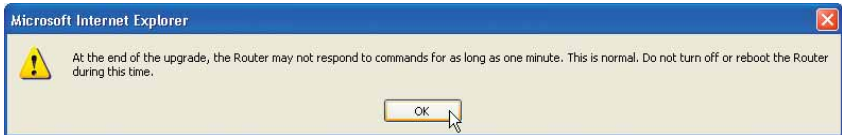


4. You will be asked if you are sure you want to continue. Click "OK".



USING THE WEB-BASED ADVANCED USER INTERFACE

- You will see one more message. This message tells you that the Router may not respond for as long as one minute as the firmware is loaded into the Router and the Router is rebooted. Click "OK".



- A 60-second countdown will appear on the screen. When the countdown reaches zero, the Router firmware update will be complete. The Router home page should appear automatically. If not, type in the Router's address (default = 192.168.2.1) into the navigation bar of your browser.

Update Firmware Successfully

The upgrade is complete when the power light stops blinking.

Router is rebooting seconds remaining.

The firmware update is complete.