

# BELKIN®

## 5-Port Gigabit Switch 8-Port Gigabit Switch

# BELKIN®

[www.belkin.com](http://www.belkin.com)

### **Belkin Tech Support**

US: 877-736-5771  
310-898-1100 ext. 2263  
Europe: 00 800 223 55 460  
Australia: 1800 235 546  
New Zealand: 0800 235 546  
Singapore: 800 616 1790

### **Belkin Corporation**

501 West Walnut Street  
Los Angeles, CA 90220-5221, USA  
310-898-1100  
310-898-1111 fax

### **Belkin Ltd.**

Express Business Park, Shipton Way  
Rushden, NN10 6GL, United Kingdom  
+44 (0) 1933 35 2000  
+44 (0) 1933 31 2000 fax

### **Belkin Ltd.**

7 Bowen Crescent, West Gosford  
NSW 2250, Australia  
+61 (0) 2 4372 8600  
+61 (0) 2 4372 8603 fax

### **Belkin B.V.**

Boeing Avenue 333  
1119 PH Schiphol-Rijk, The Netherlands  
+31 (0) 20 654 7300  
+31 (0) 20 654 7349 fax

# BELKIN®

## 5-Port Gigabit Switch 8-Port Gigabit Switch

Share large files at faster network speeds,  
with maximum efficiency



## User Manual



F5D5141-5  
F5D5141-8

# Table of Contents

<b>1 Introduction</b> .....	<b>1</b>
Features .....	2
Package Contents .....	2
<b>2 Getting to Know your Switch</b> .....	<b>3</b>
<b>3 Connecting Networking Devices to your Switch</b> .....	<b>4</b>
<b>4 Applications</b> .....	<b>7</b>
<b>5 Placement of the Switch</b> .....	<b>8</b>
<b>6 Product Specifications</b> .....	<b>9</b>
<b>7 Troubleshooting</b> .....	<b>11</b>
<b>8 Information</b> .....	<b>13</b>

# Introduction

---

Congratulations on your purchase of this high-quality Belkin 5- or 8-Port Gigabit Switch. Backward-compatible with 10/100 networks, each Switch easily integrates into a new or existing network for instant high performance. It delivers dedicated 100Mbps links to each directly attached LAN segment or PC, enabling your servers and workstations to transfer large AV and graphic files efficiently throughout your network. They provide your servers and workstations the capacity to transfer large video, audio, and graphic files throughout your network—at gigabit speeds.

Engineered for compact convenience, each Switch features a durable metal chassis that can be placed on the desktop or mounted on a wall. All ports auto-negotiate between a 10-, 100-, or 1000Mbps network and adjust for straight-through or crossover cables, so you don't have to worry about cable type.

Compatible with existing 10/100 networks and major operating systems, your 5- or 8-Port Gigabit Switch from Belkin delivers error-free transfers at maximum networks speeds.

# Introduction

---

## Features

- High-speed, dedicated 10/100/1000 Ethernet ports
  - 5 ports (Belkin 5-Port Gigabit Switch F5D5141-5)
  - 8 ports (Belkin 8-Port Gigabit Switch F5D5141-8)
- Standards
  - IEEE 802.3 z/ab 1000Base-T
  - IEEE 802.3u 100Base-Tx
  - IEEE 802.3 10Base-T
- 1U chassis, place on your desk or mount on a wall
- Auto MDI/MDIX ports
- Auto-negotiation between 10-, 100-, and 1000Mbps on all ports
- Auto-negotiation for full and half duplex on all ports
- Collision detection on all ports
- IEEE 802.3x PAUSE frames flow control in full-duplex operation
- Back-pressure flow control in half-duplex operation
- Support for up to 8,000 MAC address entries
- A Belkin Limited Lifetime Warranty and free, 24-hour technical support

## Package Contents

- Belkin 5- or 8-Port Gigabit Switch
- Power Adapter
- Self-Adhesive Rubber Pads for Desktop
- User Manual

# Getting to Know your Switch

1

2

section

3

4

5

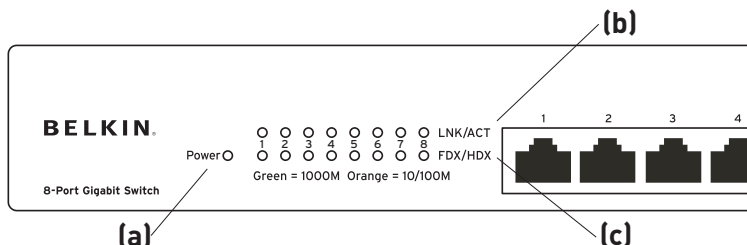
6

7

8

## Front-Panel LEDs

Belkin 5- or 8-Port Gigabit Switches feature two rows of LEDs that provide information about connection speed and activity, plus a separate Power LED.



### (a) Power (POWER) LED

- Green – Switch is operating normally
- Off – There is no power to the Switch

### (b) Speed, Link, and Activity (Link/Act) LED

- Solid Green – A valid link has been established
- Blinking Green – Data is being transmitted and received
- Off – No link is established

### (c) 1000M LED

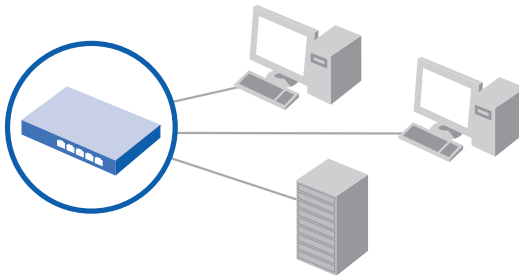
- Solid Green – A valid 1000Mbps link is established on the port
- Off – A valid 10/100Mbps link is established on the port

# Connecting Networking Devices to your Switch

---

## Connecting your Switch to your Computers

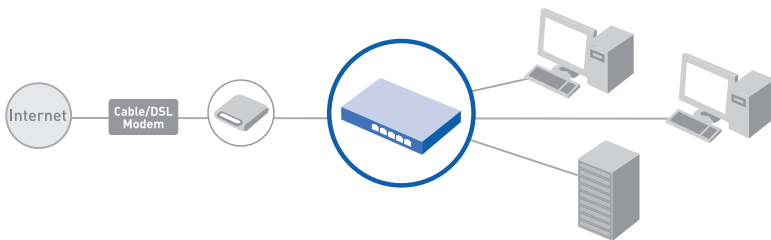
1. Power down all your equipment.
2. Connect a Category 5e or 6 Ethernet cable between each computer's network interface card (NIC) and one of the numbered ports on the front of the Switch.
3. All switch ports can automatically negotiate speeds at full- and half-duplex modes to allow users to attach 10Base-T, 100Base-Tx, and 1000Base-T network devices.
4. Connect the power adapter cord into the power adapter socket in the rear of the Switch; now plug the adapter into a power source (wall jack or power strip).



# Connecting Networking Devices to your Switch

## Connecting your Switch to your Broadband Router

1. Make sure your broadband router is correctly configured to connect to your ISP and you are able to surf the Internet.  
**Note:** If have questions regarding the configuration of your broadband router setup, consult your broadband router vendor.
2. Connect a Category 5e or 6 Ethernet cable between one of the numbered ports on the rear of the broadband router and one of the numbered ports on the rear of the Switch.
3. Connect the power adapter cord into the power adapter socket in the rear of the Switch; now plug the adapter into a power source (wall jack or power strip).
4. Power down all your computers.
5. Connect a Category 5e or 6 Ethernet cable between each computer's NIC and one of the numbered ports on the rear of the Switch.
6. Power up all your computers connected to your Belkin Switch.



1

2

3

4

5

6

7

8

section



# Connecting Networking Devices to your Switch

---

## Connecting your Switch to another Switch

1. Connect a Category 5e or 6 cable between one of the numbered ports on the front of the Switch and one of the numbered ports on the other Switch to which you are cascading or connecting.
2. All switch ports can automatically negotiate speeds at full- and half-duplex modes to allow users to attach 10Base-T, 100Base-Tx, and 1000Base-T network switches or hubs.
3. All ports support auto MDI and MDIX functionality. When cascading or connecting switches or hubs, the user can use a straight-through or crossover cable.

**Important:** When connecting two switches together, use a single cable. If multiple cables are used, loops may occur resulting in unwanted collisions. This will result in poor network performance.

## Cabling Distances

- 328 ft. (100m)

## Recommended Cabling Standard

- Category 5e or 6 for gigabit connections (1000Mbps)
- Category 5 for Ethernet (10Mbps) and Fast Ethernet connections (100Mbps)

# Applications

---

1

2

3

4

5

6

7

8

section

This Switch segments your network, significantly increasing both bandwidth and throughput. Each port on the Switch can be attached to any Ethernet, Fast Ethernet, or Gigabit Ethernet device, such as another switch or a server's network adapter. All Switch ports operate at 10/00Mbps full and half duplex, or 1000Mbps full duplex, providing up to 2Gbps of bandwidth to the attached device.

## **Bridging Functions –**

This Switch provides fully transparent bridging functions. It automatically learns node addresses that are subsequently used to filter and forward all traffic based on the destination address. When traffic passes between devices attached to the same shared collision domain, those packets are filtered from the Switch. But when traffic must be passed between unique segments (i.e., different ports on the Switch), the high-speed switching fabric forwards the packets at near-zero latency.

## **Switching Functions –**

Store-and-forward switching is used to forward traffic to other ports. This scheme ensures data integrity and provides a clean data stream.

## **Sample Application –**

This Switch is designed to operate as a small workgroup switch. It can provide 10-, 100-, or 1000Mbps connections to workstations, or 1000Mbps full-duplex links to high-speed servers. It can also provide a high-bandwidth uplink to the network backbone.

# Placement of the Switch

---

The Switches can be placed on a flat surface or on the wall.

## **Placement on a Flat Surface**

1. Affix the four rubber feet shipped with the Switch on the bottom of the Switch in the area that is clearly marked on each of the four corners.
2. Make sure the Switch is placed in an area that allows for proper ventilation.
3. Place on a flat surface.

## **Placement on the Wall**

1. The wall-mount slots are two keyholes on the bottom of the Switch. Attach two screws to the wall so that the Switch's wall-mount slots line up with the two screws.
2. Place the Switch so that it rests on the two screws.
3. Set the Switch on a flat surface in an open area to maximize ventilation. Allow at least 2.5 inches on each side of the Switch for proper ventilation and four inches at the back for proper cable clearance.
4. Make sure the power cable is close enough to reach a power outlet.

# Product Specifications



1  
2  
3  
4  
**5**  
**6**  
7  
8

section

## Physical Characteristics

Standards Conformance	IEEE Std 802.3-2002
Communication Rate	10/100/1000Mbps
Communication Mode	Full or half duplex at 10/100Mbps Full duplex at 1000Mbps
Media Supported	10Base-T: 100-Ohm Category 3 or better twisted-pair 100Base-Tx: 100-Ohm Category 5 or better twisted-pair 1000Base-T: 100-Ohm Category 5, 5e, or 6 twisted-pair
Number of Ports	F5D5141-5: 5 RJ45 1000Base-T ports F5D5141-8: 8 RJ45 1000Base-T ports
Indicator-Panel	Power Link/Act, 1000Mbps
DC Input Power	F5D5141-5: 9V DC, 1A F5D5141-8: 9V DC, 1A
Power Consumption	All 9W maximum
Temperature	Operating: 0 ~ 40° C (32 ~ 98° F) Storage: -40 ~ 70° C (-40 ~ 158° F)
Humidity	10% to 90% non-condensing
Immunity	EN 61000-4-2/3/4/5/6/8/11
Emissions	FCC Class B, CISPR Class B, EN 61000-3-2/3
Safety	CSA/CUS (CSA 60950-1 & UL 60950-1) TÜV/GS (EN 60950-1) CB (IEC 60950-1)
Physical Dimensions	F5D5141-5: 5.15 x 3.38 x 1.26 in. (13 x 8.56 x 3.19cm) F5D5141-8: 6.9 x 3.4 x 1.3 in. (17.46 x 8.6 x 3.29cm)

# Product Specifications

---

## Switching Criteria

Network Bridging Function	Filtering, forwarding, and learning
Switching Method	Store-and-forward
MAC Address Table	F5D5141-5: 8K entries F5D5141-8: 8K entries
Packet Buffer	F5D5141-5: 80Kbits F5D5141-8: 128Kbits

# Troubleshooting

---

## Diagnosing Switch Indicators

### Symptom

Power LED does not light after power on.

### Probable Causes

DC power adapter may be defective.

### Possible Solutions

- Check for loose connections.
- Check the power outlet by using it for another device.
- Replace the DC power adapter.

### Symptom

Port (link) LED does not light after connection is made.

### Probable Causes

Switch port, network card, or cable may be defective.

### Possible Solutions

- Check that the Switch and attached device are both powered on.
- Be sure the network cable is connected to both devices.
- Verify that Category 5 or better cable is used for 10/100Mbps connections; Category 5, 5e, or 6 cable for 1000Mbps connections; and that the length of any cable does not exceed 328 feet (100m).
- Check the network card and cable connections for defects.
- Replace the defective card or cable if necessary.

1

2

3

4

5

6

7

8

section

## Power and Cooling Problems

If the power indicator does not turn on when the power cord is plugged in, you may have a problem with the power outlet, power cord, or internal power supply as explained in the previous section. However, if the unit powers off after running for a while, check for loose power connections, power losses or surges at the power outlet, and verify that the fans on the right side of the unit are unobstructed and running prior to shutdown. If you still cannot isolate the problem, the internal power supply may be defective.

## Installation

Verify that all system components have been properly installed. If one or more components (e.g., the power cord or network cabling) appear to be malfunctioning, test them in an alternate environment where you are sure that all the other components are functioning properly.

You can find additional support information at [www.belkin.com/networking](http://www.belkin.com/networking) or [www.belkin.com](http://www.belkin.com) through the tech-support area.

If you want to contact technical support by phone, please call 877-736-5771. Technical support is available 24 hours a day, 7 days a week.

## Before you Call

If possible, turn on your system before you call Belkin for technical assistance and call from a telephone at or near the computer. You may be asked to describe detailed information during operation.

## EMI Certification

### FCC Class B Certification (USA)

**Warning:** This equipment generates, uses, and can radiate radio frequency energy and, if not installed and used in accordance with the instruction manual, may cause interference to radio communications. It has been tested and found to comply with the limits for a Class B digital device pursuant to Subpart B of Part 15 of FCC Rules, which are designed to provide reasonable protection against such interference when operated in a commercial environment. Operation of this equipment in a residential area is likely to cause interference, in which case the user, at his or her own expense, will be required to take whatever measures are required to correct the interference. Use unshielded twisted-pair (UTP) cabling for RJ45 connections; Category 3 cabling or greater for 10Mbps connections; Category 5 cabling for 100Mbps connections; and Category 5, 5e, or 6 for 1000Mbps connections.

### Canada Department of Communications – Class B

This digital apparatus does not exceed the Class B limits for radio noise emissions from digital apparatus as set out in the interference-causing equipment standard entitled “Digital Apparatus,” ICES-003 of the Department of Communications.

### CE Mark Declaration of Conformance for EMI and Safety (EEC)

This information technology equipment complies with the requirements of the Council Directive 89/336/EEC on the Approximation of the laws of the Member States relating to Electromagnetic Compatibility and 73/23/EEC for electrical equipment used within certain voltage limits and the Amendment Directive 93/68/EEC. For the evaluation of the compliance with these Directives, the following standards were applied:

RFI Emission:

- Limit class B according to EN 55022:1998
- Limit class A for harmonic current emission according to EN 61000-3-2/1995
- Limitation of voltage fluctuation and flicker in low-voltage supply system according to EN 61000-3-3/1995



# Information

---

## Immunity:

- Product family standard according to EN 55024:1998
- Electrostatic Discharge according to EN 61000-4-2:1995 (Contact Discharge:  $\pm 4\text{kV}$ , Air Discharge:  $\pm 8\text{kV}$ )
- Radio-frequency electromagnetic field according to EN 61000-4-3:1996 (80–1000MHz with 1kHz AM 80% Modulation: 3V/m)
- Electrical fast transient/burst according to EN 61000-4-4:1995 (AC/DC power supply:  $\pm 1\text{kV}$ , data/signal lines:  $\pm 0.5\text{kV}$ )
- Surge immunity test according to EN 61000-4-5:1995 (AC/DC line to line:  $\pm 1\text{kV}$ , AC/DC line to earth:  $\pm 2\text{kV}$ )
- Immunity to conducted disturbances, induced by radio-frequency fields: EN 61000-4-6:1996 (0.15–80MHz with 1kHz AM 80% modulation: 3V/m)
- Power frequency magnetic field immunity test according to EN 61000-4-8:1993 (1A/m at frequency 50Hz)
- Voltage dips, short interruptions, and voltage variations immunity test according to EN 61000-4-11:1994 (>95% reduction @ 10ms, 30% reduction @ 500ms, >95% reduction @ 5000ms)

## LVD:

- EN 60950-1

## Safety Compliance

Please read the following safety information carefully before installing the Switch:

**Warning:** Do not plug a phone-jack connector into the RJ45 port. This may damage this device.

**Warning:** This product does not contain any serviceable user parts.

**Warning:** When connecting this device to a power outlet, connect the field ground lead on the tri-pole power plug to a valid earth ground line to prevent electrical hazards.

**Caution:** Use only twisted-pair cables with RJ45 connectors that conform to FCC standards.

This unit operates under SELV (Safety Extra Low Voltage) conditions according to IEC 60950. The conditions are only maintained if the equipment to which it is connected also operates under SELV conditions.

1

2

3

4

5

6

7

8

## **Belkin Corporation Limited Lifetime Product Warranty**

### **What this warranty covers.**

Belkin Corporation warrants to the original purchaser of this Belkin product that the product shall be free of defects in design, assembly, material, or workmanship.

### **What the period of coverage is.**

Belkin Corporation warrants the Belkin product for the lifetime of the product.

### **What will we do to correct problems?**

#### *Product Warranty.*

Belkin will repair or replace, at its option, any defective product free of charge (except for shipping charges for the product).

### **What is not covered by this warranty?**

All above warranties are null and void if the Belkin product is not provided to Belkin Corporation for inspection upon Belkin's request at the sole expense of the purchaser, or if Belkin Corporation determines that the Belkin product has been improperly installed, altered in any way, or tampered with. The Belkin Product Warranty does not protect against acts of God (other than lightning) such as flood, earthquake, war, vandalism, theft, normal-use wear and tear, erosion, depletion, obsolescence, abuse, damage due to low voltage disturbances (i.e. brownouts or sags), non-authorized program, or system equipment modification or alteration.

### **How to get service.**

To get service for your Belkin product you must take the following steps:

1. Contact Belkin Corporation at 501 W. Walnut St., Compton CA 90220, Attn: Customer Service, or call (800)-223-5546, within 15 days of the Occurrence. Be prepared to provide the following information:
  - a. The part number of the Belkin product.
  - b. Where you purchased the product.
  - c. When you purchased the product.
  - d. Copy of original receipt.
2. Your Belkin Customer Service Representative will then instruct you on how to forward your receipt and Belkin product and how to proceed with your claim.

Belkin Corporation reserves the right to review the damaged Belkin product. All costs of shipping the Belkin product to Belkin Corporation for inspection shall be borne solely by the purchaser. If Belkin determines, in its sole discretion, that it is impractical to ship the damaged equipment to Belkin Corporation, Belkin may designate, in its sole discretion, an equipment repair facility to inspect and estimate the cost to repair such equipment. The cost, if any, of shipping the equipment to and from such repair facility and of such estimate shall be borne solely by the purchaser. Damaged equipment must remain available for inspection until the claim is finalized. Whenever claims are settled, Belkin Corporation reserves the right to be subrogated under any existing insurance policies the purchaser may have.

**How state law relates to the warranty.**

THIS WARRANTY CONTAINS THE SOLE WARRANTY OF BELKIN CORPORATION, THERE ARE NO OTHER WARRANTIES, EXPRESSED OR, EXCEPT AS REQUIRED BY LAW, IMPLIED, INCLUDING THE IMPLIED WARRANTY OR CONDITION OF QUALITY, MERCHANTABILITY OR FITNESS FOR A PARTICULAR PURPOSE, AND SUCH IMPLIED WARRANTIES, IF ANY, ARE LIMITED IN DURATION TO THE TERM OF THIS WARRANTY.

Some states do not allow limitations on how long an implied warranty lasts, so the above limitations may not apply to you.

IN NO EVENT SHALL BELKIN CORPORATION BE LIABLE FOR INCIDENTAL, SPECIAL, DIRECT, INDIRECT, CONSEQUENTIAL OR MULTIPLE DAMAGES SUCH AS, BUT NOT LIMITED TO, LOST BUSINESS OR PROFITS ARISING OUT OF THE SALE OR USE OF ANY BELKIN PRODUCT, EVEN IF ADVISED OF THE POSSIBILITY OF SUCH DAMAGES.

This warranty gives you specific legal rights, and you may also have other rights, which may vary from state to state. Some states do not allow the exclusion or limitation of incidental, consequential, or other damages, so the above limitations may not apply to you.