

Make sure you have the following:

- Wireless G Plus MIMO Router
- Power Supply
- Ethernet Cable
- User Manual
- Installation CD

Manual Setup



Advanced Users: Go to the "Alternate Setup Method" section in your User Manual.

Auto Setup



Users of

- Windows® 98SE
- Windows® Me
- Windows® 2000
- Windows® XP
- Mac OS® X

can use Easy Install Wizard

IMPORTANT: Run the Easy Install Wizard from the computer that is directly connected to the cable or DSL modem.
DO NOT CONNECT THE ROUTER AT THIS TIME.

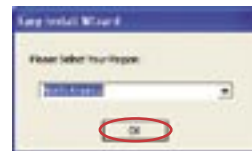
1. Install

Run the Easy Install Wizard Software

- 1.1 Shut down any programs that are running on your computer.
DO NOT CONNECT THE ROUTER AT THIS TIME.
- 1.2 Turn off any firewall or Internet-connection-sharing software on your computer.



- 1.3 **Windows Users:** Insert the Easy Install Wizard software CD into your CD-ROM drive. The Network Setup Utility screen will automatically appear within 15 seconds. Click on "Run the Easy Install Wizard" to begin.

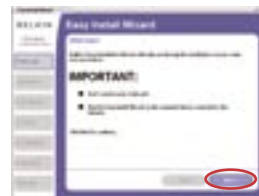


- 1.4 Select your region from the drop-down box shown on the screen.

(Click)

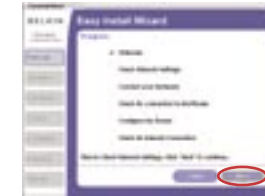
Note for Windows Users: If the Easy Install Wizard does not start up automatically, select your CD-ROM drive from "My Computer" and double-click on the file named "Start" to start the Network Setup Utility.

- 1.5 **Mac OS Users:** Insert the Easy Install Wizard software CD into your CD-ROM drive. Click on the CD icon; a folder will pop up. To begin, click on "start.osx" if you have Mac OS X.



- 1.6 You will see the Wizard's welcome screen. Click "Next".

(Click)



- 1.7 You will now see the first of a series of progress screens to help you know where you are in the setup process. Click "Next".

(Click)



- 1.8 The next screen will tell you that the Wizard is examining your network settings. When the Wizard is finished examining your settings, click "Next".

(Click)

2. Connect

Connect your Router to your Computer and Modem



- 2.1 This step instructs you to locate the cable connected between your modem and the networking port on your computer. Unplug this cable from the computer and plug it into the BLUE port on the Router. Click "Next" to continue.

(Click)



2.2 This step instructs you to locate the YELLOW cable that is included with your Router. Plug one end of this cable into ANY one of the YELLOW ports on your Router. Plug the other end of the cable into the networking port on your computer. Click "Next" to continue.

(Click)

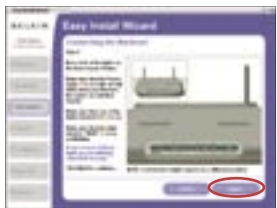
Next



2.3 This step instructs you to locate the power supply that is included with your Router. Plug the power supply's small connector into the GRAY port on the Router. Plug the power supply into an empty power outlet. Click "Next" to continue.

(Click)

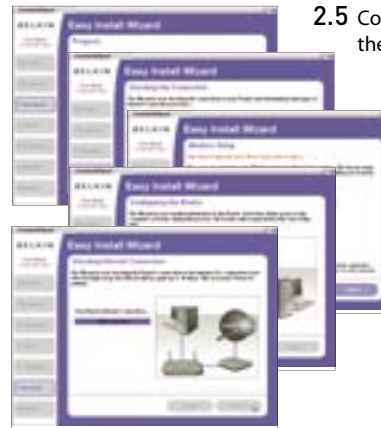
Next



2.4 This step instructs you to look at the lights on the front of your Router. Make sure the appropriate lights are ON. Refer to the Easy Install Wizard software on your computer's screen for more details. Click "Next" to continue.

(Click)

Next



2.5 Continue following the on-screen directions.



2.6 When complete, you will see the screen shown at left.

(Click)

Finish

Please visit <http://www.belkin.com/networking> for the latest software updates and technical information.

Belkin Tech Support

USA: 877-736-5771
310-898-1100 ext. 2263
Europe: 00 800 223 55 460
Australia: 1800 235 546
New Zealand: 0800 235 546
Singapore: 800 616 1790

BELKIN®

www.belkin.com

Belkin Corporation
501 West Walnut Street,
Compton, CA 90220-5221
USA
+1 310 898 1100
+1 310 898 1111 fax

Belkin Ltd.
Express Business Park
Shipton Way, Rushden
NN10 6GL, United Kingdom
+44 (0) 1933 35 2000
+44 (0) 1933 31 2000 fax

Belkin B.V.
Boeing Avenue 333
1119 PH Schiphol-Rijk
The Netherlands
+31 (0) 20 654 7300
+31 (0) 20 654 7349 fax

Belkin GmbH
Hanebergstraße 2
80637 Munich
Germany
+49 (0) 89 143405 0
+49 (0) 89 143405 100 fax

Belkin SAS
5 Rue du Petit Robinson
3ème étage, 78350 Jouy en Josas
France
+33 (0) 1 34 58 14 00
+33 (0) 1 39 46 62 89 fax

Belkin Nordic
Knarrnäsgatan 7
164 40 Kista
Sweden
+46 (0) 8 5229 1870
+46 (0) 8 5229 1874 fax

© 2006 Belkin Corporation. All rights reserved. All trade names are registered trademarks of respective manufacturers listed.

3. Begin Surfing!

Congratulations! You have finished installing your new Belkin Router. To test your Internet connection, open your browser and visit any website, such as www.belkin.com.