



# Bluetooth™ USB Adapter

*Connect your peripherals and computing devices, without cables*



**User Manual**

F8T001 ver. 2

F8T003 ver. 2

# TABLE OF CONTENTS

Introduction . . . . .	2
Product Features . . . . .	3
System Requirements . . . . .	4
Package Contents . . . . .	5
USB Adapter Specifications . . . . .	6
Supported Profiles . . . . .	7
Software Setup . . . . .	9
Hardware Setup . . . . .	14
Initial Configuration Wizard . . . . .	17
Uninstalling the Software . . . . .	20
Glossary . . . . .	21
Information . . . . .	23

## INTRODUCTION

Thank you for purchasing the *Bluetooth* USB Adapter (the USB Adapter) from Belkin. The USB Adapter features the breakthrough *Bluetooth* wireless technology that lets you create efficient communications between your USB desktop PC or notebook and devices using *Bluetooth* wireless technology—without physical connectors or cables.

Before you install and start using your new USB Adapter, please take a few minutes to review some of the terms that you will be seeing throughout the document. You will find a brief Glossary on page 21 of this manual.



## PRODUCT FEATURES

The USB Adapter is compliant with *Bluetooth* standard version 1.1 and provides:

- Compliancy with *Bluetooth* specification v1.1 devices
- USB bus powering: no external power supply necessary
- Support for Microsoft® Windows® 98 SE, Me, 2000, and XP
- Compatible with Mac OS® X v10.2 and higher\*
- Operating distance of up to 10 meters (F8T003) or 100 meters (F8T001)\*\*
- Point-to-multipoint connections
- Support for data rates up to 721Kbps
- Built-in security: up to 128-bit encryption and authentication
- Compatibility with USB desktop and notebook computers

\*Mac OS X driver and software provided by Apple®.

\*\*10m/100m range is dependent upon environment, number of users, and other wireless devices within proximity.

## SYSTEM REQUIREMENTS

### PC System Requirements

- PC-compatible computer, CPU speed of 200MHz or above
- Memory: 64MB or above, 128MB recommended
- One available USB port, USB 1.1 standard
- Windows 98 SE, Me, 2000, and XP

### Mac® System Requirements

- One available USB port, USB 1.1 standard
- Mac OS X v10.2 and higher\*

\*Mac OS X driver and software provided by Apple.

## PACKAGE CONTENTS

- *Bluetooth* USB Adapter
- CD-ROM for installation software and documentation
- User Manual
- Quick Installation Guide
- Registration Card

**For a complete explanation of the Belkin *Bluetooth* software, refer to the software manual contained in the included CD-ROM.**

## USB ADAPTER SPECIFICATIONS

Bluetooth Compliance:	Version 1.1	Dimensions:	64mm (L) x 22mm (W) x 8mm (H)
Physical Interface:	USB UHCI/OHCI 1.1-compliant	Weight:	0.3oz. (8.5g)
Operating Frequency:	2.4 to 2.4835GHz	Operating Temp:	0 to 70 degrees Celsius
Output Power:	(F8T001) 4~20 dBm, Class I (F8T003) -6~4 dBm, Class II	Storage Temp:	-30 to 80 degrees Celsius
Sensitivity:	<0.1% BER @ -80 dBm	Humidity:	5-90% (non-condensing)
Data Rate:	723/56Kbps	Supply Voltage:	5.0V DC
Typical Power Consumption:	(F8T001) Tx: 150mA, Rx 80mA (F8T003) Tx: 65mA, Rx 45mA	Nominal Current:	100mA
Operating Range:	(F8T001) 100-meter radius indoors (F8T003) 10-meter radius indoors	Spread Spectrum:	FHSS (Frequency Hopping Spread Spectrum)
Network Topology:	Point-to-Multipoint	Modulation:	GFSK (Gaussian Frequency Shift Keying)
Packet Support:	1/3/5 Slots Packet	Certifications:	FCC, CE, ICES, C-Tick, BQB, WHQL for XP
Operation:	Master/Slave	Warranty:	2 years
Frequency Stability:	+/- 10PPM	Supported Languages:	English, German, Japanese, Spanish, French
LED Indicator:	Power On/Data Traffic		
Antenna Type:	Integrated, 0 +/- 1 dBi		

*Specifications are subject to change without notice.*

## SUPPORTED PROFILES

The services supported by your USB Adapter are defined as “Profiles”. Available profiles include:

- Generic Access
- Service Discovery
- Personal Area Network
- Hardcopy Cable Replacement
- Serial Port
- LAN Access
- Dial-Up Networking
- Generic Object Exchange
- Object Push
- File Transfer
- Synchronization
- Fax
- Human Interface Device
- Headset
- Audio Gateway

## SUPPORTED PROFILES

Your USB Adapter gives you the ability to do the following—without cables:

- Transfer files
- Access dial-up networks
- Connect to local area networks
- Perform an ActiveSync® session
- Connect to serial ports
- Exchange PIM data
- Send or exchange business cards
- Connect to mice and keyboards
- Print

The basic functions of the *Bluetooth* Neighborhood include:

- Device Discovery
- Service Discovery
- Establishing links with remote devices

## SOFTWARE SETUP

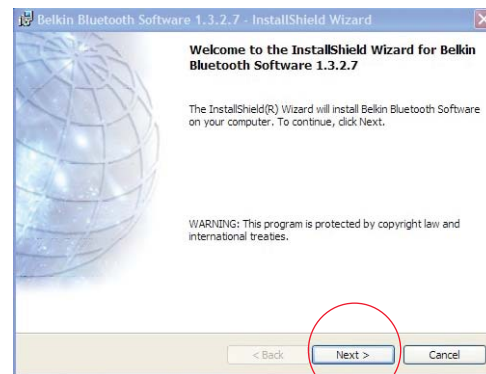
### Software Setup for Windows 98 SE, Me, 2000, and XP

To install the software for the USB Adapter, follow the instructions below:

*Note: The installation process for Windows XP may look slightly different from Windows 98 SE, Me, and 2000.*

**Note: Do not insert the USB Adapter into the USB port prior to software installation.**

1. Insert the software installation CD-ROM into the PC's CD-ROM drive.
2. The "Software InstallShield Wizard" window appears. Click on "Next" to begin the installation process.

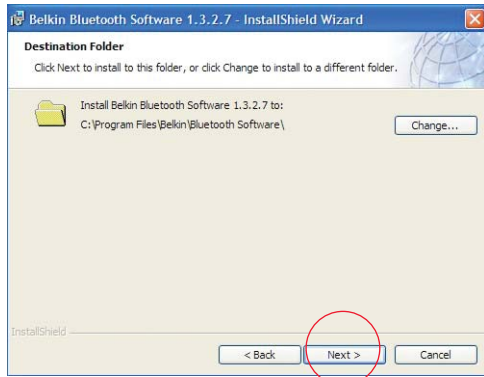


## SOFTWARE SETUP

3. Choose "I accept the terms in the license agreement" to accept the license agreement. Click on "Next" to continue.

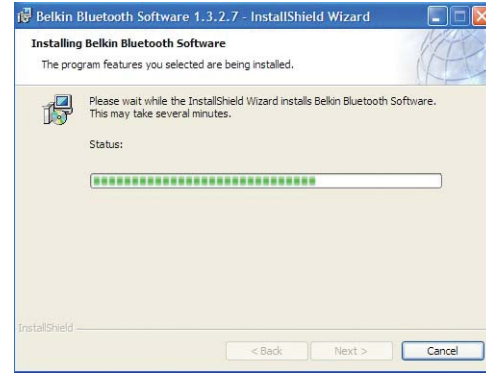
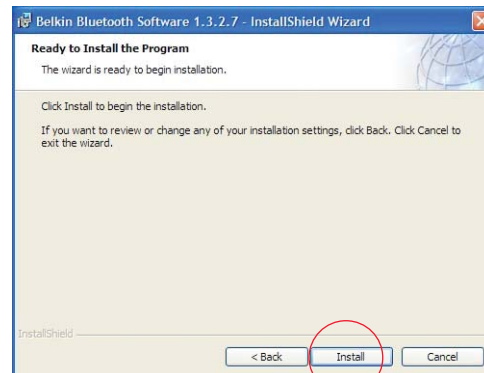


4. Specify the location where the software files will be installed on your hard drive. It is recommended that you install the software in the default directory "C:\Program Files\belkin\Bluetooth\Software\". Click on "Next" to continue.



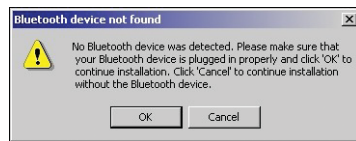
## SOFTWARE SETUP

5. Confirm that the device software is ready to be installed and click on "Install".
6. The InstallShield Wizard will begin to install the Belkin Bluetooth Software. This may take several minutes.



## SOFTWARE SETUP

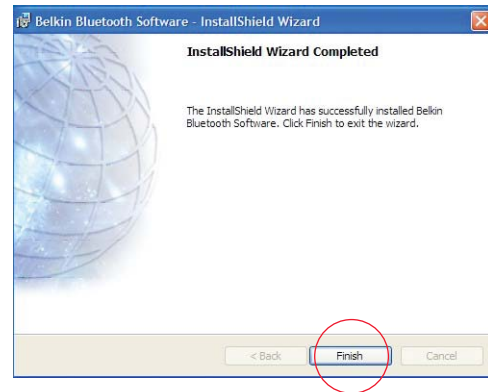
7. During the installation process you may be prompted to insert your USB Adapter. If your USB Adapter is not plugged into your computer at this time, you may insert it into an available USB 1.1-compliant port on your desktop or notebook computer, then click “OK” to continue. Click on “Cancel” to continue installation without the *Bluetooth* device inserted. Refer to the “Hardware Installation” section of this User Manual for instructions for installing the hardware.



*Note: If at any time during the installation process you receive a “Driver Signature Notice”, click “OK” to continue the installation process.*

## SOFTWARE SETUP

8. Confirm the completion of the software installation; click “Finish” and restart the system if prompted to do so.





## HARDWARE SETUP

### Hardware Setup for Windows 98 SE, Me, 2000, and XP

Follow these instructions to install your USB Adapter on your PC.

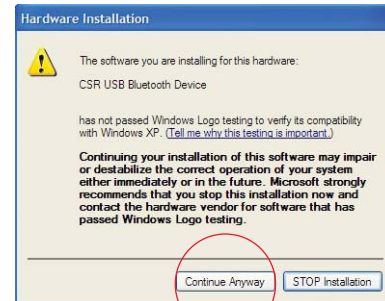
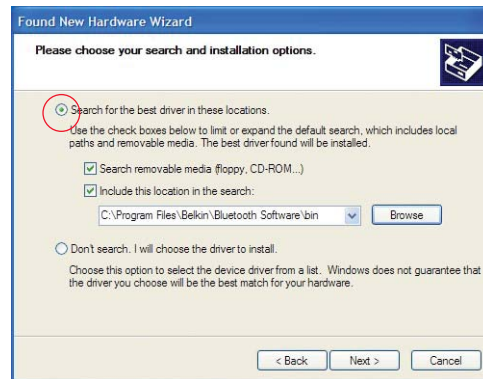
*Note: Your USB Adapter is sensitive to static electricity, which can damage its delicate electrical components. To protect your device, always touch the metal chassis of your computer before handling the USB Adapter. This will ground any potential electrostatic discharge. Avoid touching the metal connector when handling the USB Adapter. Dry weather conditions or walking across carpeted floors may cause you to acquire an electrostatic charge.*

1. Connect the USB Adapter directly to an available USB A-type connector on your desktop or notebook computer. Your system should register a new USB device found.
2. Choose “Install from a list or specific location”; then click “Next”.



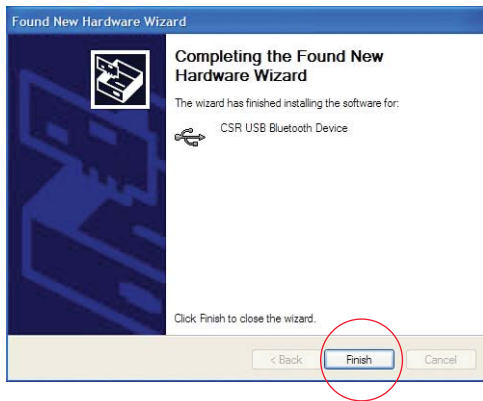
## HARDWARE SETUP

3. Browse for the location of the device driver “:\Program Files\Belkin\Bluetooth\Software\bin\” then click “Next”.
4. If you receive the following “Hardware installation notice”, click on “Continue Anyway” to continue with the installation process.



## HARDWARE SETUP

5. A window will appear that confirms the completion of the hardware installation; click on “Finish” to complete the installation process.



## INITIAL CONFIGURATION WIZARD

### Configuring your computer for Windows 98 SE, Me, 2000, and XP

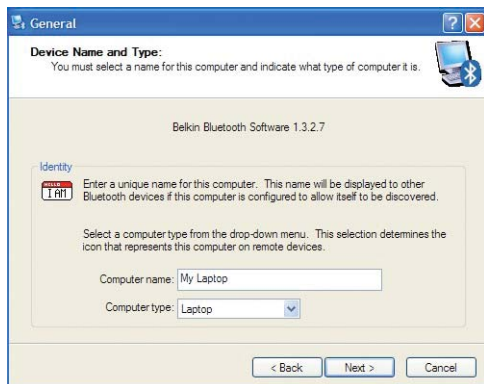
1. Once the installation process is complete you will be prompted by the “Initial Bluetooth Configuration Wizard”. This Wizard will guide you through the initial setup of your *Bluetooth* device. Please follow the Wizard as prompted.



2. Name your computer with a friendly name. This is name will be made available when your computer is discovered by other *Bluetooth* devices.

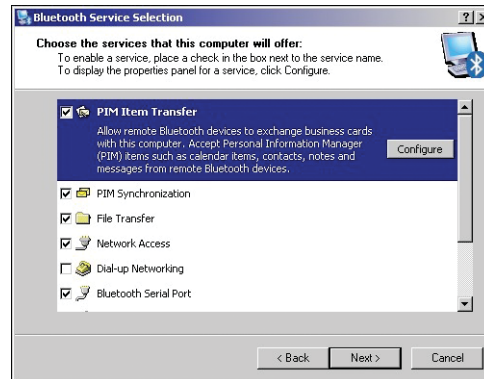
## INITIAL CONFIGURATION WIZARD

3. Choose the type of computer you have installed the USB Adapter to in the drop-down menu.
4. Continue the Wizard to configure the *Bluetooth* services that this computer will make available of other *Bluetooth* devices to use. Click “Next”.



## INITIAL CONFIGURATION WIZARD

5. Choose the *Bluetooth* services your computer will offer. The most common service for your computer type will be checked by default.
6. If you have another *Bluetooth* device and you want to configure the way this computer will use its services, click “Next”. Otherwise click “Skip”.



## UNINSTALLING THE SOFTWARE

### Uninstalling the Software for Windows 98 SE, Me, 2000, and XP

Follow these instructions to uninstall your USB Adapter on your PC.

1. Insert the CD-ROM included with your USB Adapter.
2. This “InstallShield Wizard” should automatically load. If it does not load, explore the CD and run the “Setup.exe” file.
3. The “InstallShield” window should now appear. Click “Next” to continue with the uninstall process.

## GLOSSARY

**Authentication** Security feature that requires users to verify a numeric password before exchanging data.

**Authorization** Security feature that requires user approval before another user is allowed to share data.

**Bluetooth Neighborhood** A collection of *Bluetooth* devices.

**Bonded Device** Recognized by your device so as not to require authentication or authorization.

**Device** Device enabled with *Bluetooth* technology.

**Device Address** Unique electronic address of a *Bluetooth* device.

**Device Discovery** The location and recognition of one *Bluetooth* device by another.

**Device Group** Compilation of several *Bluetooth* devices into a group, normally to conduct related tasks.

## GLOSSARY

**Device Name** Name that a *Bluetooth* device provides when discovered by another device.

**Service Discovery** Determines which applications other devices have in common with yours.

## INFORMATION

### DECLARATION OF CONFORMITY WITH FCC RULES FOR ELECTROMAGNETIC COMPATIBILITY

We, Belkin Corporation, of 501 West Walnut Street, Compton, CA 90220, declare under our sole responsibility that the product,

F8T001, F8T003

to which this declaration relates, complies with Part 15 of the FCC Rules. Operation is subject to the following two conditions: (1) this device may not cause harmful interference, and (2) this device must accept any interference received, including interference that may cause undesired operation.

#### Caution: Exposure to Radio Frequency Radiation.

The radiated output power of this device is far below the FCC radio frequency exposure limits. Nevertheless, the device shall be used in such manner that the potential for human contact normal operation is minimized.

When connecting an external antenna to the device, the antenna shall be placed in such a manner to minimize the potential for human contact during normal operation. In order to avoid the possibility of exceeding the FCC radio frequency exposure limits, human proximity to the antenna shall not be less than 20cm (8 inches) during normal operation.

#### Federal Communications Commission Notice

This equipment has been tested and found to comply with the limits for a Class B digital device, pursuant to Part 15 of the FCC Rules. These limits are designed to provide reasonable protection against harmful interference in a residential installation.

## INFORMATION

This equipment generates, uses, and can radiate radio frequency energy. If not installed and used in accordance with the instructions, it may cause harmful interference to radio or television reception, which can be determined by turning the equipment off and on, the user is encouraged to try and correct the interference by one or more of the following measures:

- Reorient or relocate the receiving antenna.
- Increase the distance between the equipment and the receiver.
- Connect the equipment to an outlet on a circuit different from that to which the receiver is connected.
- Consult the dealer or an experienced radio/TV technician for help.

### Modifications

The FCC requires the user to be notified that any changes or modifications to this device that are not expressly approved by Belkin Corporation may void the users authority to operate the equipment.

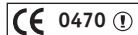
### Canada-Industry Canada (IC)

The wireless radio of this device complies with RSS 139 & RSS 210 Industry Canada. This Class B digital complies with Canadian ICES-003.

Cet appareil numérique de la classe B conforme à la norme NMB-003 du Canada.

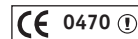
### Europe-European Union Notice

Radio products with the CE alert marking comply with the R&TTE Directive (1995/5/EC) issued by the Commission of the European Community.



## INFORMATION

Compliance with this directive implies conformity to the following European Norms (in brackets are the equivalent international standards).



- EN 60950 (IEC60950) – Product Safety
- EN 300 328 Technical requirement for radio equipment
- ETS 300 826 General EMC requirements for radio equipment.

To determine the type of transmitter, check the identification label on your Belkin product.

Products with the CE marking comply with the EMC Directive (89/336/EEC) and the Low Voltage Directive (72/23/EEC) issued by the Commission of the European Community. Compliance with these directives implies conformity to the following European Norms (in brackets are the equivalent international standards).



- EN 55022 (CISPR 22) – Electromagnetic Interference
- EN 55024 (IEC61000-4-2,3,4,5,6,8,11)- Electromagnetic Immunity
- EN 61000-3-2 (IEC610000-3-2) - Power Line Harmonics
- EN 61000-3-3 (IEC610000) – Power Line Flicker
- EN 60950 (IEC60950) – Product Safety

Products that contain the radio transmitter are labeled with CE alert marking and may also carry the CE logo.

## INFORMATION

### Belkin Corporation Limited Two-Year Product Warranty

Belkin Corporation warrants this product against defects in materials and workmanship for its warranty period. If a defect is discovered, Belkin will, at its option, repair or replace the product at no charge provided it is returned during the warranty period, with transportation charges prepaid, to the authorized Belkin dealer from whom you purchased the product. Proof of purchase may be required.

This warranty does not apply if the product has been damaged by accident, abuse, misuse, or misapplication; if the product has been modified without the written permission of Belkin; or if any Belkin serial number has been removed or defaced.

THE WARRANTY AND REMEDIES SET FORTH ABOVE ARE EXCLUSIVE IN LIEU OF ALL OTHERS, WHETHER ORAL OR WRITTEN, EXPRESSED OR IMPLIED. BELKIN SPECIFICALLY DISCLAIMS ANY AND ALL IMPLIED WARRANTIES, INCLUDING, WITHOUT LIMITATION, WARRANTIES OF MERCHANTABILITY AND FITNESS FOR A PARTICULAR PURPOSE.

No Belkin dealer, agent, or employee is authorized to make any modification, extension, or addition to this warranty.

BELKIN IS NOT RESPONSIBLE FOR SPECIAL, INCIDENTAL, OR CONSEQUENTIAL DAMAGES RESULTING FROM ANY BREACH OF WARRANTY, OR UNDER ANY OTHER LEGAL THEORY, INCLUDING BUT NOT LIMITED TO, LOST PROFITS, DOWNTIME, GOODWILL, DAMAGE TO OR REPROGRAMMING, OR REPRODUCING ANY PROGRAM OR DATA STORED IN, OR USED WITH, BELKIN PRODUCTS.

Some states do not allow the exclusion or limitation of incidental or consequential damages or exclusions of implied warranties, so the above limitations of exclusions may not apply to you. This warranty gives you specific legal rights, and you may also have other rights that vary from state to state.



[belkin.com](http://belkin.com)

#### **Belkin Corporation**

501 West Walnut Street  
Compton • CA • 90220 • USA  
Tel: 310.898.1100  
Fax: 310.898.1111

#### **Belkin Components, Ltd.**

Express Business Park • Shipton Way  
Rushden • NN10 6GL • United Kingdom

Tel: +44 (0) 1933 35 2000  
Fax: +44 (0) 1933 31 2000

#### **Belkin, Ltd.**

7 Bowen Crescent • West Gosford  
NSW 2250 • Australia

Tel: +61 (0) 2 4372 8600  
Fax: +61 (0) 2 4372 8603

#### **Belkin Tech Support**

US: 310.898.1100 ext. 2263  
800.223.5546 ext. 2263  
Europe: 00 800 223 55 460  
Australia: 1800 666 040

P74408

© 2003 Belkin Corporation. All rights reserved. All trade names are registered trademarks of respective manufacturers listed. The Bluetooth name and the Bluetooth trademarks are owned by Bluetooth SIG, Inc., and are used by Belkin Corporation under license. Mac, Mac OS, and Apple are trademarks of Apple Computer, Inc., registered in the U.S. and other countries.