



belkin.com

Connecting your Bluetooth Adapter to the Nokia N-gage
with Pc Suite.



**Use with Belkin Bluetooth Software Ver. 1.3.x & 1.4.2.10
Bluetooth adapters F8T001, F8T003, and F8T006-PC.**

Connecting your Bluetooth Adapter to the Nokia N-gage with Pc Suite.

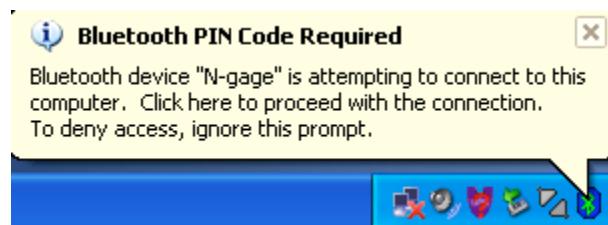
Before Starting:

1. Make sure you have the latest Nokia PC Suite software loaded on the computer. The Nokia PC Suite is required to connect to the NokiaN-gage.

Note: Please make sure you install the Nokia N-gage Pc-suite first then install the Belkin Bluetooth Software second.

Section: 1 Activating Bluetooth and pairing the phone with the N-gage.

1. Go to the **Main Menu** on your Nokia N-gage.
2. Go to **Tools**, Select **Bluetooth**.
3. Make sure Bluetooth is set to **ON**.
4. Using your Scroll Key scroll to the next tab to the right in your Bluetooth Menu.
5. Select **OPTIONS** and then **NEW PAIRED DEVICES**.
6. Your Phone will search your area for active Bluetooth devices.
7. Select the Computer you would like to connect your phone to.
8. Enter a passkey, use **0000** and click **OK**.
9. On your Computer check the taskbar (next to the Clock) for the Passkey prompt.
10. Click on the Bluetooth Passkey prompt or click on the Bluetooth Icon to put in the Passkey.



11. Put in the Passkey (**0000**) and click **OK**.

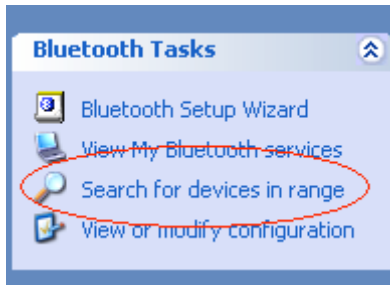


Section: 2 Getting the Com port on the computer

1. On your Computer, open Bluetooth Neighborhood or Double Click on the Bluetooth icon on the Lower right of your Task bar.



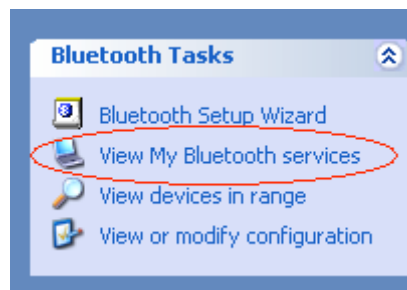
2. On the Bluetooth menu on the left side click on Search for Devices in range or Entire Bluetooth Neighborhood.



3. Make sure that the Nokia N-gage has a check mark next to it meaning that it is Paired.



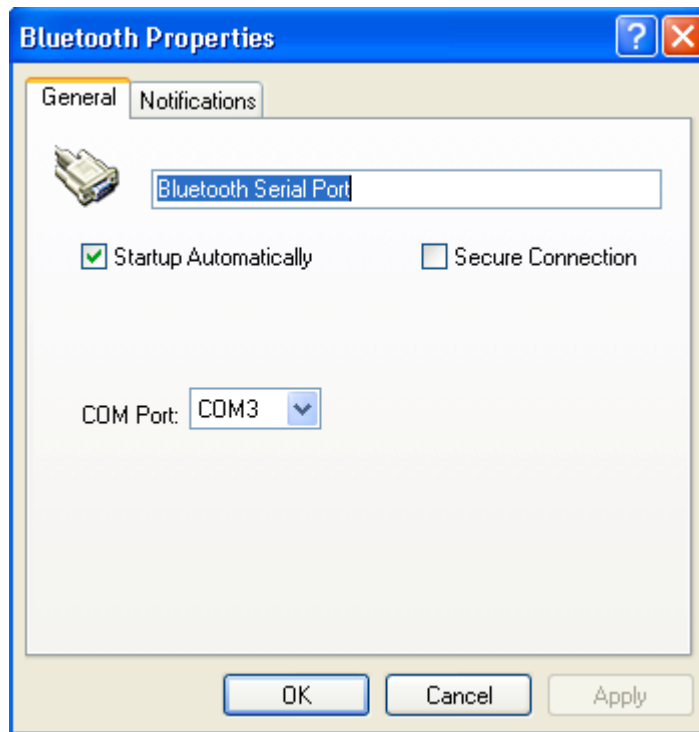
4. On the left side Click on View My Bluetooth Services or My Device.



5. Right click on the Serial Port Icon then go to Properties.



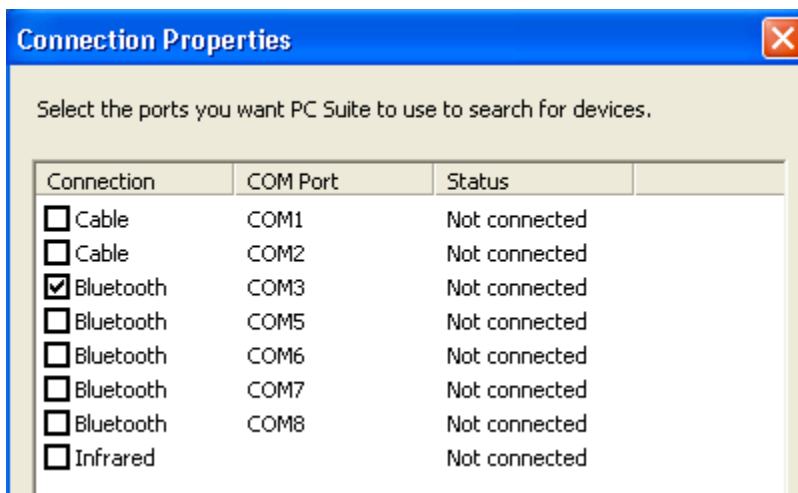
6. Verify the COM port which is on (Com 3) is selected and that Start up Automatically is check and uncheck Secure Connection and click on Apply.



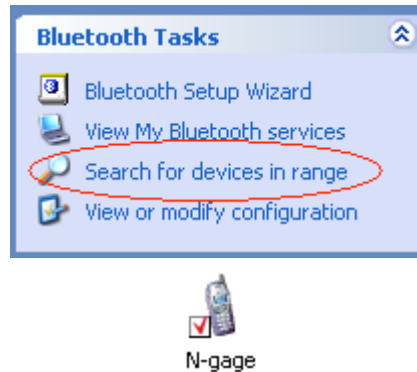
7. Double Click on the M-Router icon (PC Suite) on your taskbar.



8. Make sure that Com 3 is the only Com port checked as shown in step 6.



9. Go Back to Entire Bluetooth Neighborhood or Search for devices in Range and double click on the Paired Nokia N-gage Icon.

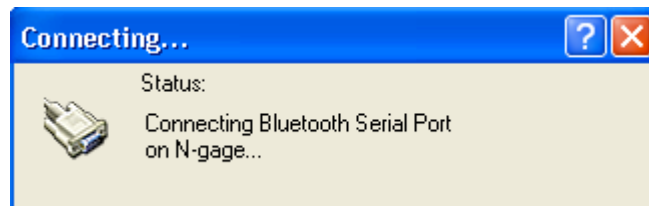


10. Double click on the serial Port icon.

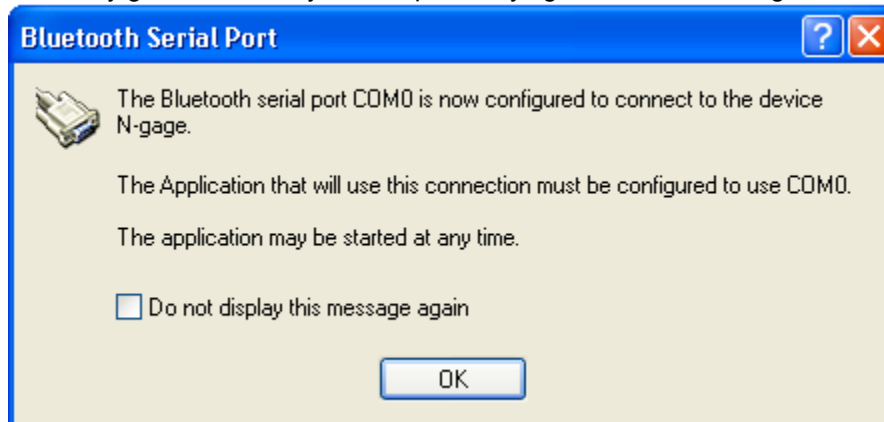
11. Accept the connection on your Phone.



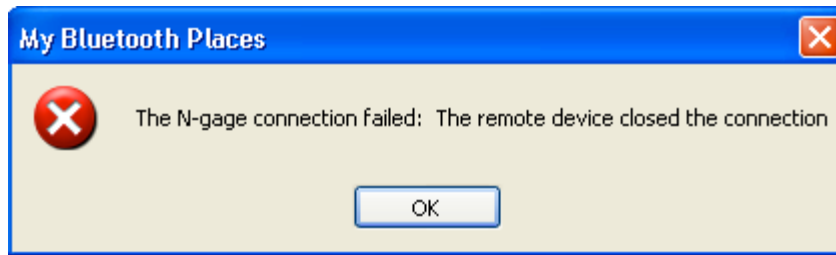
12. It will say "Status: Connecting Bluetooth Serial Port".



13. You may get an error on your computer saying that com 0 is being used. Click OK



13. You may get a connection fail prompt. Click OK



You are now connected to your phone. Verify the connection by double clicking on the M-router icon on the bottom right of your tool bar. The PC Suite Icon in the system tray will also turn from grayed out to blue and green meaning that is connected.

