

IMPORTANT!

This Guide refers to the following Products:

**F1DP108G****F1DP116G****KVM-Over-IP Mouse Synchronisation Guide**

Please read the following carefully;

Synopsis:

This guide is designed to help you configure the mouse settings to overcome the problems of poorly synchronised local and remote mice via the SMB Cat 5 KVM-Over-IP.

The guide is based on a remote session being established from a Windows 2000 or XP machine.

Requirements:

This guide assumes that you are an Administrator or Owner of an SMB Cat 5 KVM-Over-IP (F1DP108G or F1DP116G) and have access to the KVM and its connected Hardware.

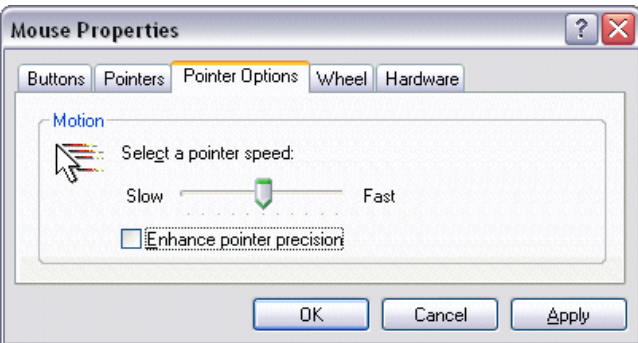
- SMB Cat 5 KVM-Over-IP Unit
- IEC Power Cord for KVM
- Minimum 1 Host Machine
- Minimum 1 Server Interface Module (SIM)
- Ethernet Cable (To connect KVM to LAN)
- LAN Client PC with remote access to KVM

KVM-Over-IP Mouse Synchronisation Guide | Step 1

First it is necessary to check the 'Mouse Settings' on the Servers connected to the KVM to ensure that 'Mouse Acceleration' is adjusted to suit remote access. The 'Mouse Settings' are accessed via 'Control Panel'

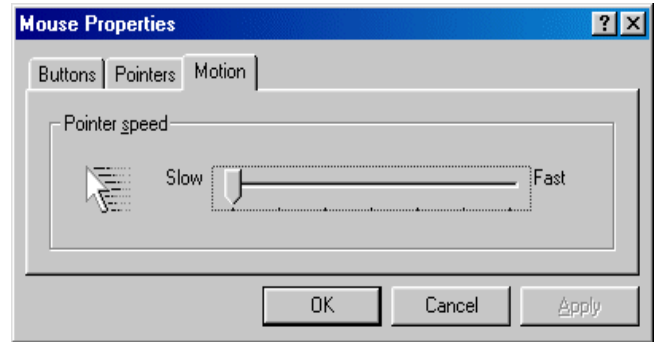
Windows XP | 2003 Server | Vista

Set 'Pointer Speed' is set half-way and ensure the checkbox for 'Enhance Pointer Precision' is un-ticked.



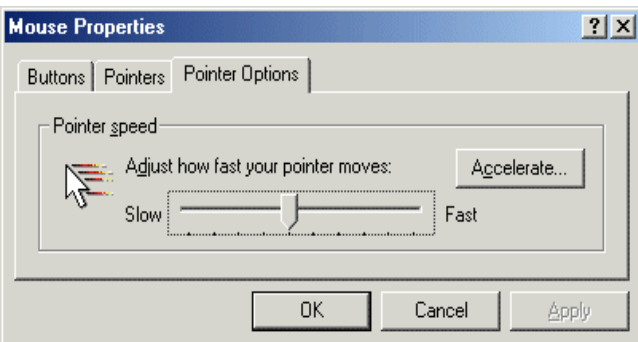
Windows 98 | 98SE | NT

Check that the 'Pointer Speed' is set to its slowest position and leave trails off.



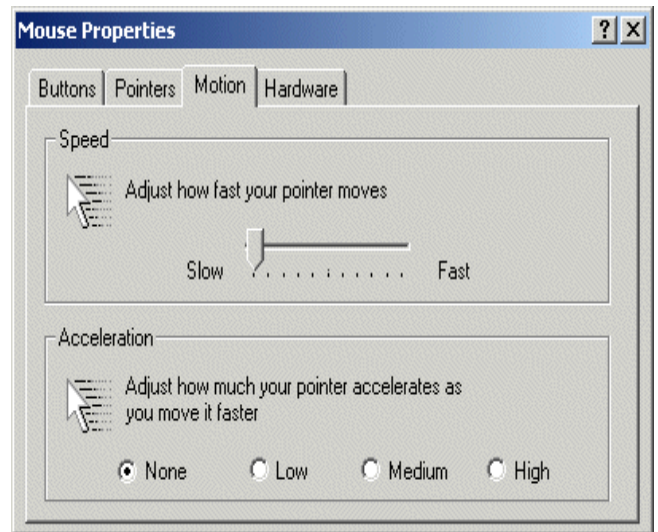
Windows ME

Set 'Pointer Speed' to half-way and make sure that acceleration is turned off.



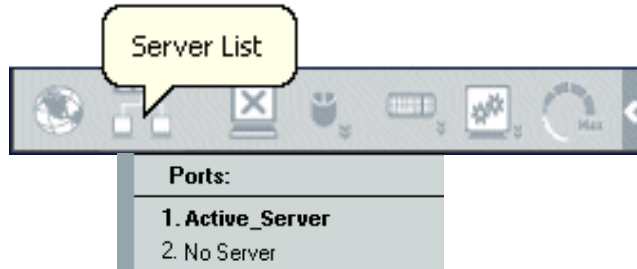
Windows 2000

Set 'Speed' to slow and ensure that the acceleration is set to 'None'.

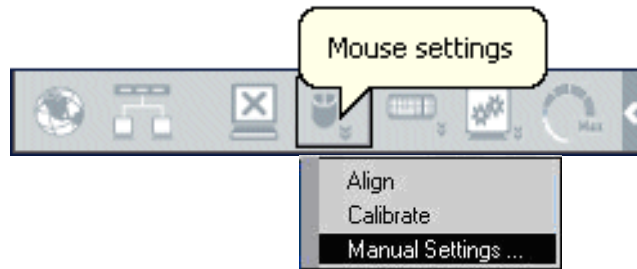


KVM-Over-IP Mouse Synchronisation Guide | Step 2

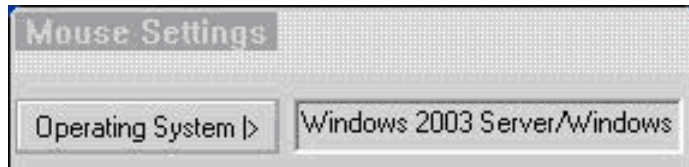
You can now login to the SMB Cat 5 KVM-Over-IP via its IP Address (e.g. <https://192.168.2.155>). Once the Remote Access Session has been established, locate the 'Quick Access Toolbar', choose 'Server List' and then select 'Port 1'.



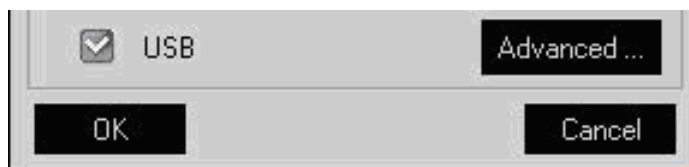
Next, select the 'Mouse Settings' Icon in the 'Quick Access Toolbar' and choose the 'Manual Settings' option from the drop down list.



In the 'Mouse Settings' section verify that the correct Operating System has been selected from the options provided. For Windows 2000 un-check the 'Default' option and set 'Mouse Acceleration' to none.

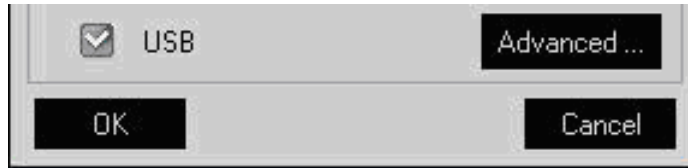


The 'USB' box on the bottom-left corner should only be ticked if the Host Machine (Server) is attached to the KVM via a USB Server Interface Module (SIM).

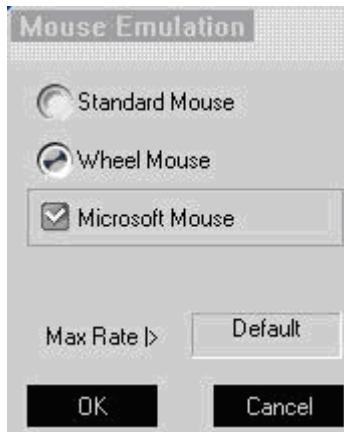


KVM-Over-IP Mouse Synchronisation Guide | Step 3

In the same 'Mouse Settings' window click on the 'Advanced' button;



Ensure that the 'Mouse Emulation' settings are as follows;



Once the settings have been changed accordingly click 'OK' on the 'Mouse Emulation' screen, and click 'OK' again on the 'Mouse Settings' screen.

Next, press the key combination LEFT CTRL + M to align the mouse.

Once complete, check that the local and remote mice are now synchronised.

Repeat these steps for all affected Host Server Ports.