

USB SCSI Adapter  
with Termpower



P73417-A



F5U115-UNV

## Introduction and System Requirements

Thank you for purchasing the Belkin Components® USB SCSI Adapter. Now, you can easily add up to seven SCSI devices on your Windows® 98 PC or Mac® through a USB port! No more opening your computer case, no more IRQ conflicts or driver problems! Simply plug it in!

### Your PC must have:

- 486 processor or faster
- 16MB memory or more
- A free USB port (on the computer or a hub)
- Windows® 98, Windows® 98 SE, or Windows® 2000

### Your Macintosh® must have:

- OS 8.6 or higher
- A free USB port (on the computer or at a hub)

### Notes:

1. It is NOT recommended that you plug in the USB SCSI Adapter to the USB ports on the iMac™ keyboard. The keyboard does not supply enough power, and is a low-speed device.
2. If you own a non-iMac™ machine, such as a PowerMac or G3, and wish to add USB ports, please obtain a Belkin USB BusPort™ for Mac® (model # F5U005-MAC).

Your SCSI device must be able to supply termination power to the USB SCSI Adapter. Some devices, such as Iomega Zip® Drives and some brands of scanners, will not be able to provide the required +5V termination power. In such an event, a SCSI device that can provide termination power must be connected to the device chain or an optional power supply adapter, available for purchase from Belkin (Part# F5U115xPWR can be used).

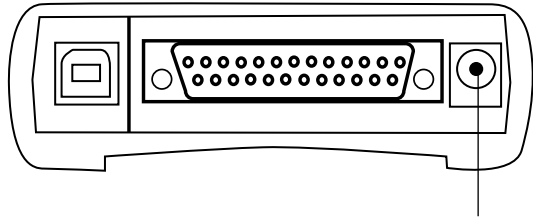
**If you are going to plug the USB SCSI Adapter into a USB Hub, make sure that it is a self-powered hub.**

(A self-powered hub has its own power supply.)

## Package Contents

- Belkin Components USB SCSI Adapter
- Windows and Macintosh driver software
- Registration card
- This manual

Note: Optional AC Adapter may be purchased directly from Belkin. Ask for part #F5U115xPWR.



Jack for Optional  
AC Adapter

## Macintosh® Installation and Usage

### MACINTOSH® INSTALLATION:

1. Insert the Belkin USB SCSI Adapter Installation CD into your CD-ROM drive.
2. Double-click on the CD icon that appears on the Mac OS desktop. You will now see three folders: Mac OS Driver, PC Driver, and Win2000. Double-click on the Mac OS Driver folder.
3. Double-click the icon titled "USB SCSI Installer" and follow the prompts to install the USB SCSI Adapter system extensions.

### USAGE:

1. After the system extensions are installed, shut down your Mac, then connect a SCSI device or device chain to the USB SCSI Adapter. Make sure that the devices are powered up. See appendices for adapters and cables you may need.
2. After restart, icons of your SCSI device(s) should appear on your desktop.

## Macintosh® Installation and Usage (continued)

**Note:** If you unplug the USB SCSI Adapter from the computer, or the device(s) from the SCSI chain, the operating system may not recognize this and might think that the device(s) are still connected. In the event that the device(s) and/or the USB SCSI Adapter is unplugged from the computer and an application tries to access the device(s), your computer will hang. You must restart your computer in order to recover from this error.

Hence, to disconnect a device from the SCSI chain, always drag its icon to the TRASH first, then disconnect the USB SCSI Adapter or devices.

## Windows® 98 Installation Instructions

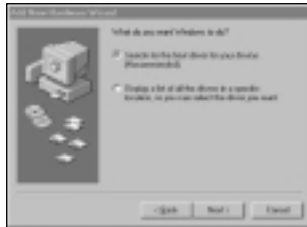
### WINDOWS® 98 INSTALLATION:

1. Connect your SCSI device or device chain to the USB SCSI Adapter. See appendices for adapters and cables you may need. Make sure that the device(s) are powered up.
2. Plug in the USB SCSI Adapter to a free USB port on your computer, or USB Hub. A "New Hardware Found..." dialog box will appear.
3. Click "Next".

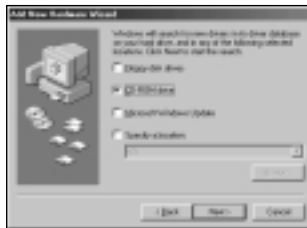
**Note:** Even if the Adapter is plugged into your USB port (or Hub), it must first be plugged into a SCSI device that provides termination power before Windows will detect and enumerate the Adapter and the SCSI device(s). If your SCSI device(s) does not provide termination power, contact Belkin to purchase the optional AC Adapter (part# F5U115xPWR).

## Windows® 98 Installation Instructions (continued)

- On the screen that appears, select "Search for the best driver for your device (Recommended)", and then click "Next".

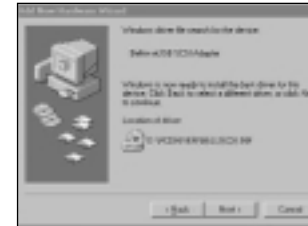


- Windows will now prompt you for drivers. Insert the Belkin USB SCSI Adapter CD-ROM in your CD-ROM drive. Put a check mark in the box named "Specify a location:". Type D:\PC Driver. (In this example, D is the driver letter for the CD-ROM drive; it may be different on your computer, you may need to check it.) Click "Next".



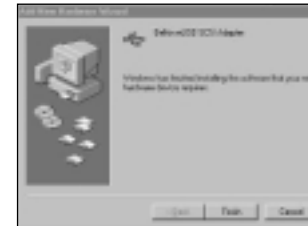
## Windows® 98 Installation Instructions (continued)

- Windows will automatically find and install the drivers from the CD-ROM, and display the next dialog box, confirming it has loaded the correct files:



Click "Next".

- Lastly, Windows will display this final dialog box.



Click "Finish".

- Next, Windows will detect the attached device. Follow the instructions that came with the device and the installation is complete.

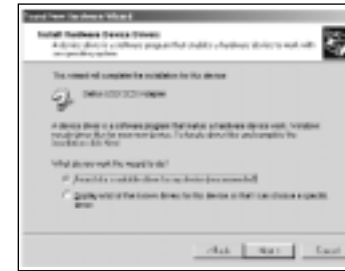
## Windows® 2000 Installation Instructions

1. Turn on the External SCSI device and connect it to the DB25 connector on the USB SCSI, using an adapter if necessary.
2. Connect the USB SCSI Adapter to the computer or an attached hub with a USB A-B Cable.
3. Windows will detect the device as "Belkin USB SCSI Adapter" and launch the Add New Hardware Wizard. Click "Next".

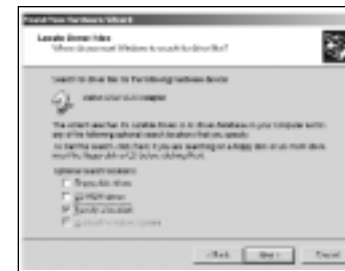


## Windows® 2000 Installation Instructions (continued)

4. Leave the selection on "Search for a suitable driver for my device (recommended)". Click "Next".



5. Select "Specify a location". Click "Next".

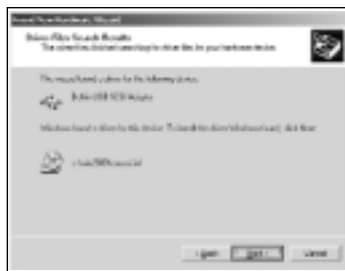


## Windows® 2000 Installation Instructions (continued)

- You will now be prompted to insert the USB SCSI Adapter installation CD into your CD-ROM drive. Type in the path to your CD-ROM drive in the box labeled "Copy manufacturer's files from:" (typically D:\WIN2000). If you prefer you may click on the "Browse" button and browse to the "WIN2000" directory of the installation CD-ROM. Click "OK."



- Windows will locate the drivers for "Belkin USB SCSI Adapter." Click "Next".



10

## Windows® 2000 Installation Instructions (continued)

- Windows will install the necessary drivers. Click "Finish."



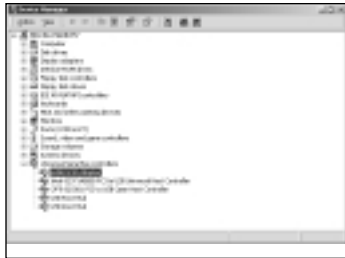
- The Adapter Properties window should list the device as "eUSB SCSI Adapter". Click on "Close" to close the window.



11

## Windows® 2000 Installation Instructions (continued)

10. The Device Manager should list the device as "eUSB SCSI Adapter" as well.



11. Now attach the External SCSI device to the DB25 connector on the USB SCSI Adapter.
12. Windows should detect the device. Follow the directions that came with the device and installation is complete.
13. If the device is NOT detected by Windows when it is plugged in, you can click on the "Scan for Hardware changes" button in the device manager, unplug and replug the USB cable attached to the USB SCSI Adapter, or restart the computer.




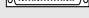

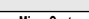


## Troubleshooting

*The SCSI device(s) connected to the USB SCSI Adapter is not detected by my computer.*

- Make sure the SCSI device(s) are powered up and at least one device provides termination power necessary for the Adapter's operation. If you are just connecting one device and that device does not have termination power, contact Belkin to purchase the optional AC Adapter (part# F5U115xPWR). The SCSI device(s) must be powered up AND connected to the Adapter prior to plugging into the USB port.
- If you are using a USB Hub or composite device that has a built-in hub, make sure that the device is self-powered, providing the full 500mA of current required by the Adapter.
- After shutting down your computer, try unplugging then plugging in the Adapter from the USB port.
- Try unplugging the Adapter, turning the SCSI device(s) power off and back on, then plugging the Adapter back into the USB port.
- Restart your computer with the Adapter connected to the USB port, and the SCSI device(s) powered up.



## Belkin External SCSI Cross-Reference Table

Connectors on Cable	DB25 Male	DB50 Male (3 Row)	Cent 50 Male	Micro DB50 Male	Micro DB68 Male	VHDCI Ultra Micro Cent 68 Female	Micro Cent 50 Male	HD130 Male
DB25 Male 	F2A047-XX	SPECIAL	F2N954-XX	F2N992-XX	F2N1035-XX	A2N1067-XX	F2N998-XX	F2N982-XX
DB50 Male (3 Row) 	SPECIAL	F2N966-XX	F2N964-XX	F2N960-XX	F2N997-XX	SPECIAL	SPECIAL	SPECIAL
Cent 50 Male 	F2N954-XX	F2N964-XX	F2N956-XX	F2N962-XX	F2N973-XX	A2N1064-XX	F2N963-XX	F2N984-XX
Micro DB50 Male 	F2N992-XX	F2N960-XX	F2N962-XX	F2N968-XX	F2N977-XX	A2N1065-XX	F2N971-XX	F2N983-XX
Micro DB68 Male 	F2N1035-XX	F2N997-XX	F2N973-XX	F2N977-XX	F2N991-XX	F2N1066-XX	F2N1000-XX	SPECIAL
VHDCI Ultra Micro Cent 68 Male 	A2N1067-XX	SPECIAL	A2N1064-XX	F2N1065-XX	F2N1066-XX	SPECIAL	SPECIAL	SPECIAL
Micro Cent 50 Male 	F2N998-XX	SPECIAL	F2N963-XX	F2N971-XX	F2N1000-XX	SPECIAL	F2N961-XX	SPECIAL
Micro Cent 50 Male 	F2N982-XX	SPECIAL	F2N984-XX	F2N983-XX	SPECIAL	SPECIAL	SPECIAL	SPECIAL

*This is only a partial listing of our most common SCSI Cable Assemblies. Contact your Belkin sales representative for assistance in choosing the cable you need.*

## Belkin USB SCSI Adapter Uninstall

**To uninstall the USB SCSI Adapter, do the following:**

**Note:** Do not unplug the Belkin USB SCSI Adapter from the computer before completing the following:

### A. For PC

1. Right-click on the "My Computer" icon on your desktop. Select "Properties" then "Device Manager". Look for "Universal Serial Bus Controller", click on the "Plus" sign beside it, highlight "Belkin USB SCSI Adapter", then click "Remove". Click "OK". Close Device Manager.
2. Click on "Start/Find/Files and Folders". Under "Named" type "Bel\*.\*". Under "Look In" select the "C" drive then click on "Find Now". Delete the four items that will appear, namely: "Beluscsi.sys, Belmsd.pdr, Belmsd, and Belkin Component...."
3. You can now unplug the Belkin USB SCSI Adapter from the computer. Restart your computer.

### B. For Mac

1. Double-click on your "Hard Drive" icon and look for "System Folder". Double-click on "System Folder".
2. In "System Folder", look for another folder called "Extensions". Under "Extensions" look for the following files: "Belkin USB SCSI" and "Belkin USB SCSI SIM". Drag these 2 files to the Trash Bin.
3. You can now unplug the Belkin USB SCSI Adapter from the computer. Restart your computer.

## Compatibility List

### A. Devices that work Standalone

#### n SCSI Hard Drives

- Seagate ST31220A - 2GB
- Seagate ST51080N - 1GB
- Microtech P-E-2000 - 2GB

#### n SCSI Removable Media Drives

- Coniglio MO 230MB ( FujitsuDrive M2512A )
- Fujitsu 640 Dyna MO - M2513A - F/W: 1300
- Fujitsu 640 Dyna MO SE - M2513EL - F/W: 0010
- Iomega Jaz - 1GB F/W J.66
- Iomega Jaz - 2GB F/W E.17
- Olympus 640 MO - S350 - F/W: 1.20
- SCSI - Panasonic PD device - LF 1000
- SyQuest SQ270 - 270MB

#### n SCSI CDD\CDR\CD Changers

- Sony 4X - CDU 76S SCSI CDD F/W 1.0a.
- NAKAMICHI 4-tray CD Changer - MJ 4.8
- NEC Multispin 4x - 7-tray CD Changer - NRC MBR - 7.4
- Sanyo CDR-254S F/W 1.02
- Philips Omnivriter26 (Ricoh) F/W 2.03
- Sony CDR CDU948S F/W 1.0h
- Philips CDD2600 F/W 1.07
- Plextor DX-327S F/W 1.02
- Teac CD-532S 1.0a

#### n SCSI Tape Drives

- Exabyte 8585S F/W 06M0
- Conner-TR4 CTT- 8000IS F/W 1.17
- HO-C1533A F/W 9503

## Compatibility List (continued)

- Microtech MicroDAT 8000

#### n SCSI Scanners

- HP 5P C5110A F/W 3638
- Pixelcraft Pro Image 2400 Scanner
- UMAX ProLook 2000

#### n Other

- Microtech Digital PhotoAlbum - PC Card Reader
- Microtech Digital PhotoAlbum.p - PC Card Reader
- Microtech Digital PhotoAlbum Pro - PC Card Reader
- SCM Microsystems (Intermart) PCD-10
- SCM Microsystems (Intermart) PCD-15
- SCM Microsystems (Intermart) PCD-25

### B. Devices that work on a SCSI chain or may require the included power adapter and DB25 adapter

#### n SCSI Hard Drives

- Seagate ST31220A - 2GB
- Seagate ST51080N - 1GB
- Microtech P-E-2000 - 2GB

#### n SCSI Removable Media Drives

- Iomega Jaz - 1GB F/W J.66
- Iomega Jaz - 2GB F/W E.17
- Iomega Zip 100 (SCSI) F/W J.66
- Fujitsu 640 Dyna MO - M2513A - F/W: 1300
- Fujitsu 640 Dyna MO SE - M2513EL - F/W: 0010
- Olympus 640 MO - S350 - F/W: 1.20

## Compatibility List (continued)

- SCSI - Panasonic PD device - LF 1000
- SyQuest SQ270 - 270MB
- n **SCSI CDD\CDR\CD Changers**
  - Sony 4X - CDU 76S SCSI CDD F/W 1.0a.
  - NAKAMICHI 4-tray CD Changer - MJ 4.8
  - NEC Multispin 4x - 7-tray CD Changer - NRC MBR - 7.4
  - Sanyo CDR-254S F/W 1.02
  - Philips Omniwriter26 (Ricoh) F/W 2.03
  - Sony CDR CDU948S F/W 1.0h
  - Philips CDD2600 F/W 1.07
  - Plextor DX-327S F/W 1.02
  - Teac CD-532S 1.0a
- n **SCSI Tape Drives**
  - Exabyte 8585S F/W 06M0
  - Conner-TR4 CTT- 8000IS F/W 1.17
  - HO-C1533A F/W 9503
  - Microtech MicroDAT 8000
- n **SCSI Scanners**
  - HP 5P C5110A F/W 3638
  - Pixelcraft Pro Image 2400 Scanner
  - UMAX Power Look 2000
  - UMAX Astra 1220S
- n **Other**
  - Microtech Digital PhotoAlbum - PC Card Reader
  - Microtech Digital PhotoAlbum.p - PC Card Reader
  - Microtech Digital PhotoAlbum Pro - PC Card Reader
  - SCM Microsystems (Intermart) PCD-10

## Compatibility List (continued)

- SCM Microsystems (Intermart) PCD-15
- SCM Microsystems (Intermart) PCD-25
- C. **Currently incompatible devices**
  - n Nikon LS-2000 Film Scanner (Super Coolscan 2000)
  - n Microtech Digital PhotoAlbum P (Old MP01625)
  - n Microtech Digital PhotoAlbum (Old MP01610A)
  - n UMAX Power Look III

## Information

### FCC Statement

#### DECLARATION OF CONFORMITY WITH FCC RULES FOR ELECTROMAGNETIC COMPATIBILITY

We, Belkin Components, of 501 West Walnut Street, Compton CA 90220, declare under our sole responsibility that the product:  
F5U115-UNV

to which this declaration relates:

Complies with Part 15 of the FCC Rules. Operation is subject to the following two conditions: (1) this device may not cause harmful interference, and (2) this device must accept any interference received, including interference that may cause undesired operation.

### CE Declaration of Conformity

We, Belkin Components, declare under our sole responsibility that the F5U115-UNV, to which this declaration relates, is in conformity with Generic Emissions Standard EN50081-1 and with Generic Immunity Standard EN500A1-1 1992.

### Belkin Components Limited Lifetime Product Warranty

Belkin Components warrants this product against defects in materials and workmanship for its lifetime. If a defect is discovered, Belkin will, at its option, repair or replace the product at no charge provided it is returned during the warranty period, with transportation charges prepaid, to the authorized Belkin dealer from whom you purchased the product. Proof of purchase may be required.

This warranty does not apply if the product has been damaged by accident, abuse, misuse, or misapplication; if the product has been modified without the written permission of Belkin; or if any Belkin serial number has been removed or defaced.

THE WARRANTY AND REMEDIES SET FORTH ABOVE ARE EXCLUSIVE IN LIEU OF ALL OTHERS, WHETHER ORAL OR WRITTEN, EXPRESSED OR IMPLIED. BELKIN SPECIFICALLY DISCLAIMS ANY AND ALL IMPLIED WARRANTIES, INCLUDING, WITHOUT LIMITATION, WARRANTIES OF MERCHANTABILITY AND FITNESS FOR A PARTICULAR PURPOSE.

No Belkin dealer, agent, or employee is authorized to make any modification, extension, or addition to this warranty.

BELKIN IS NOT RESPONSIBLE FOR SPECIAL, INCIDENTAL, OR CONSEQUENTIAL DAMAGES RESULTING FROM ANY BREACH OF WARRANTY, OR UNDER ANY OTHER LEGAL THEORY, INCLUDING BUT NOT LIMITED TO LOST PROFITS, DOWNTIME, GOODWILL, DAMAGE TO, OR REPROGRAMMING, OR REPRODUCING ANY PROGRAM OR DATA STORED IN OR USED WITH BELKIN PRODUCTS.

Some states do not allow the exclusion or limitation of incidental or consequential damages or exclusions of implied warranties, so the above limitations of exclusions may not apply to you. This warranty gives you specific legal rights, and you may also have other rights that vary from state to state.



**belkin.com**

***Belkin Components***

501 West Walnut Street  
Compton • CA • 90220 • USA  
Tel: 310.898.1100  
Fax: 310.898.1111

Tech Support • Tel: 800.223.5546 ext. 2263  
e-mail: techsupp@belkin.com

***Belkin Components, Ltd.***

Unit 13 • Gatelodge Close • Round Spinney  
Northampton • Northants • NN3 8RX • United Kingdom  
Tel: +44 (0) 1604678300  
Fax: +44 (0) 1604678330

Tech Support • Tel: 0800 146881 +44 (0) 1604678300  
e-mail: eurosupport@belkin.com

***Belkin Components B.V.***

Diamantlaan 8 • 2132 WV  
Hoofddorp • The Netherlands  
Tel: +31 (0) 235698765  
Fax: +31 (0) 235612694

Tech Support • Tel: +31 (0) 235698765  
e-mail: eurosupport@belkin.com