
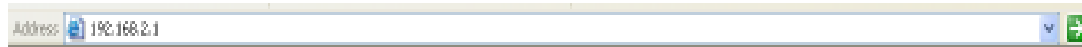
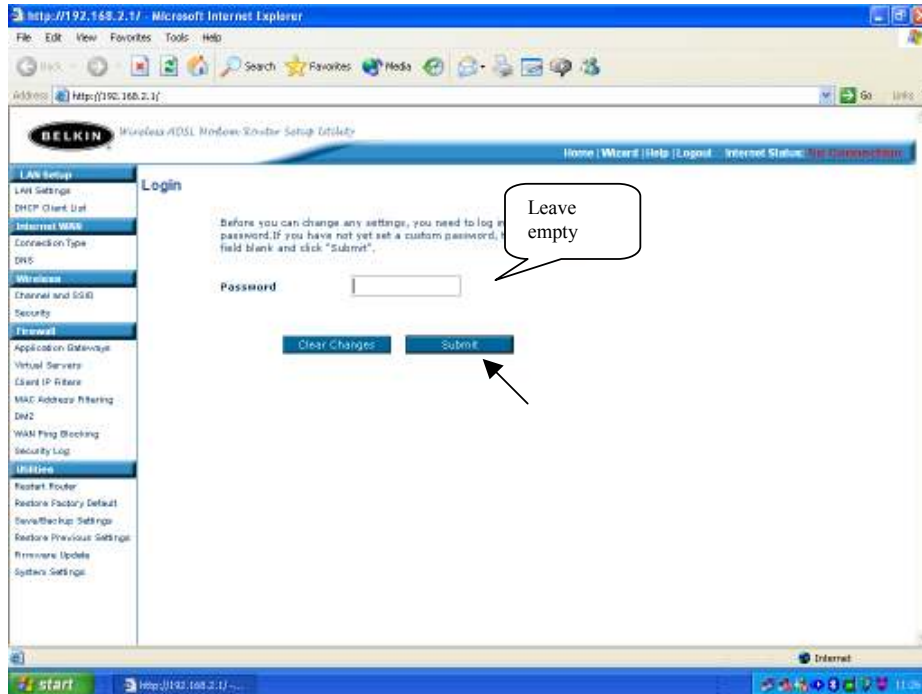


Internet Connection configuration

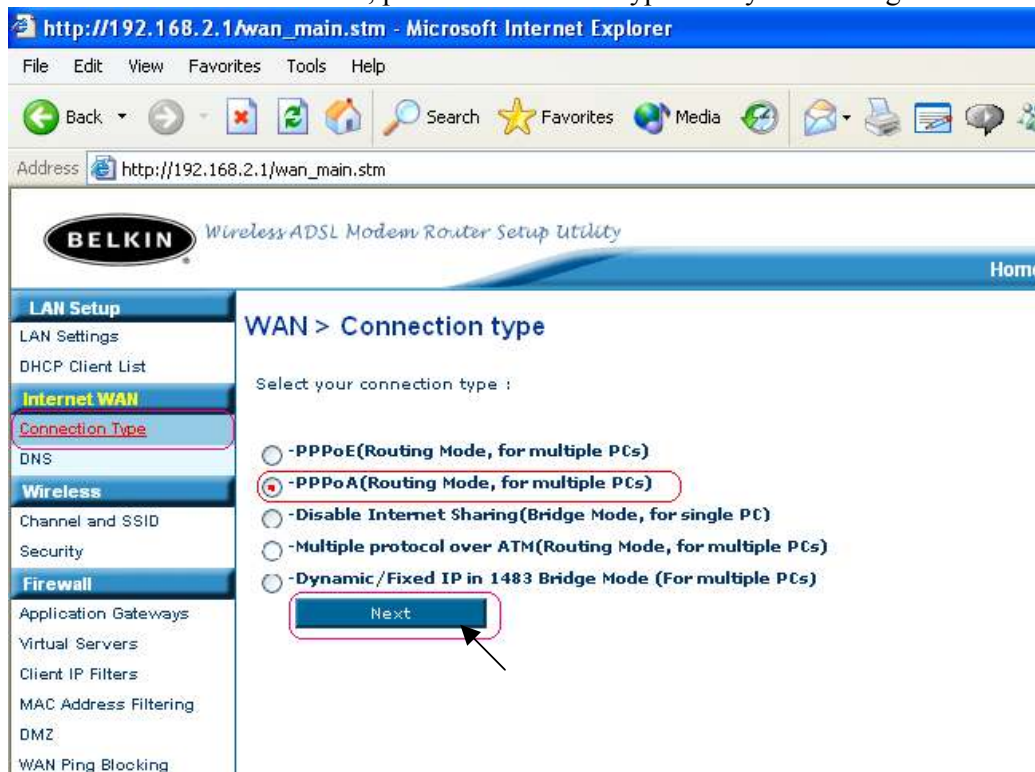
1. Go to Internet Explorer  and type in the Address box, 192.168.2.1,



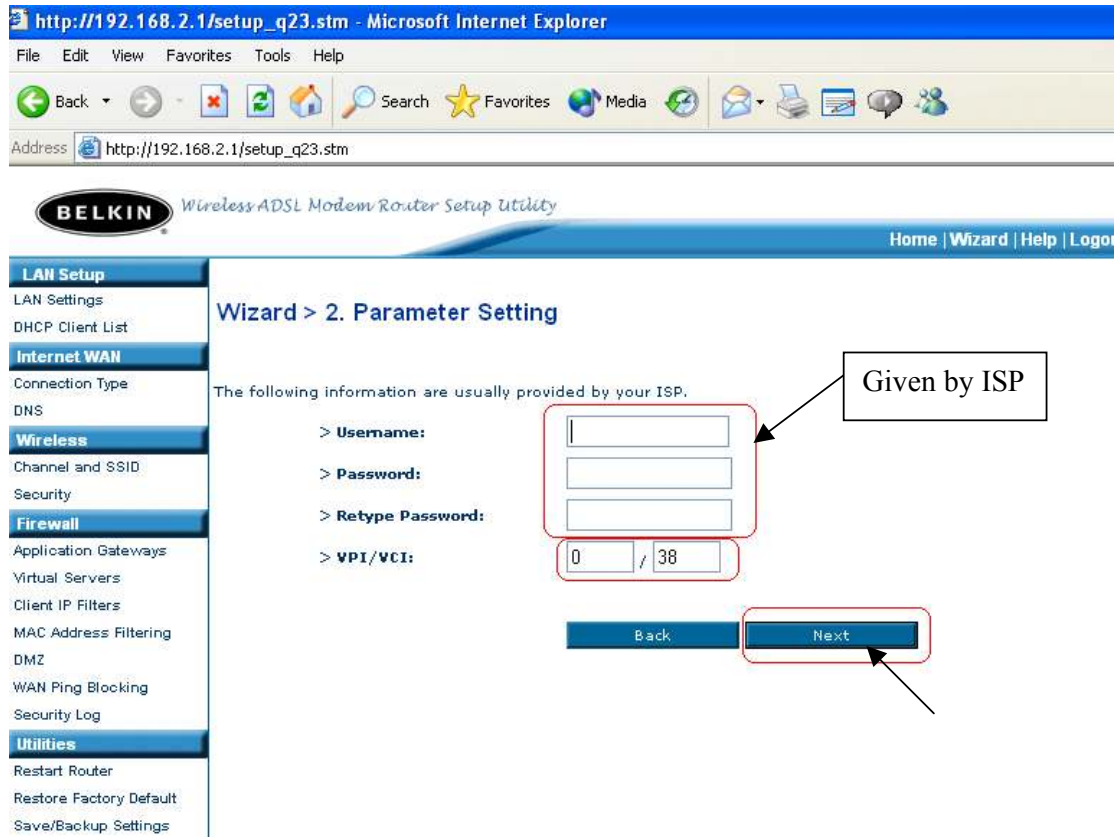
then you should get a web page like this:



Leave empty the password box and press “Submit”
Then on the Menu on the left, press “Connection Type” and you should get a Window like this:

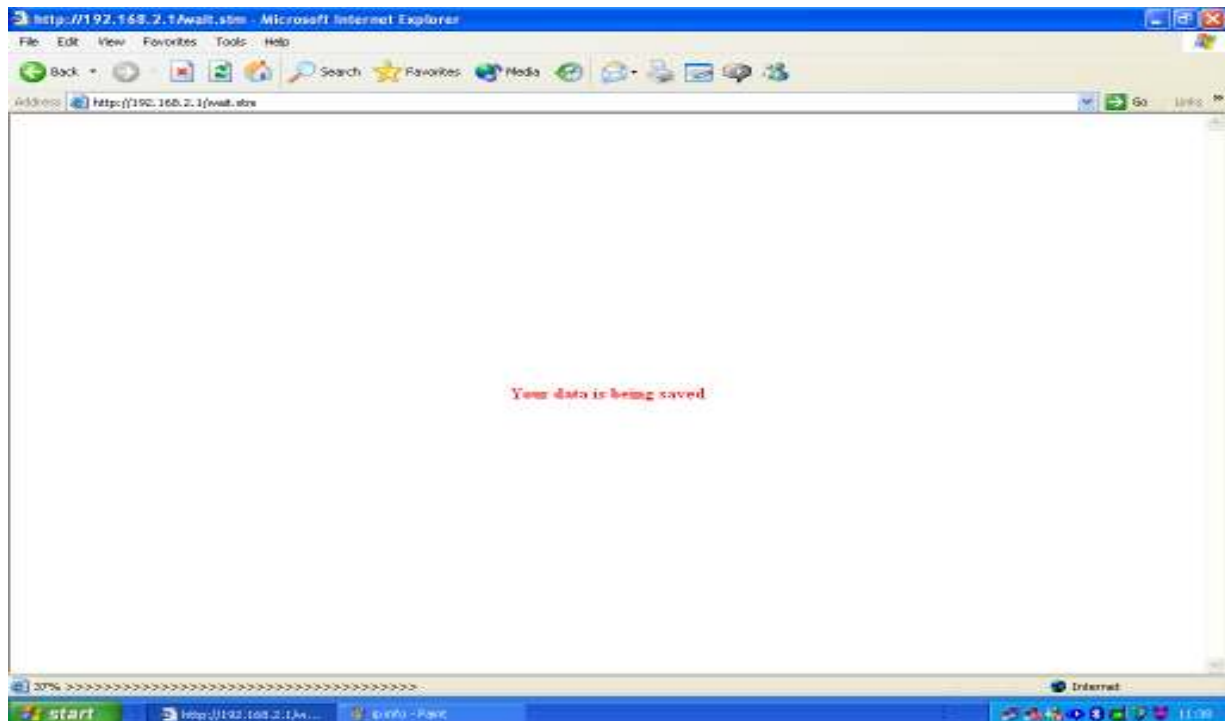


2. Choose the connection: “PPPoA” and press “Next”.
Then you will have a web page like this:

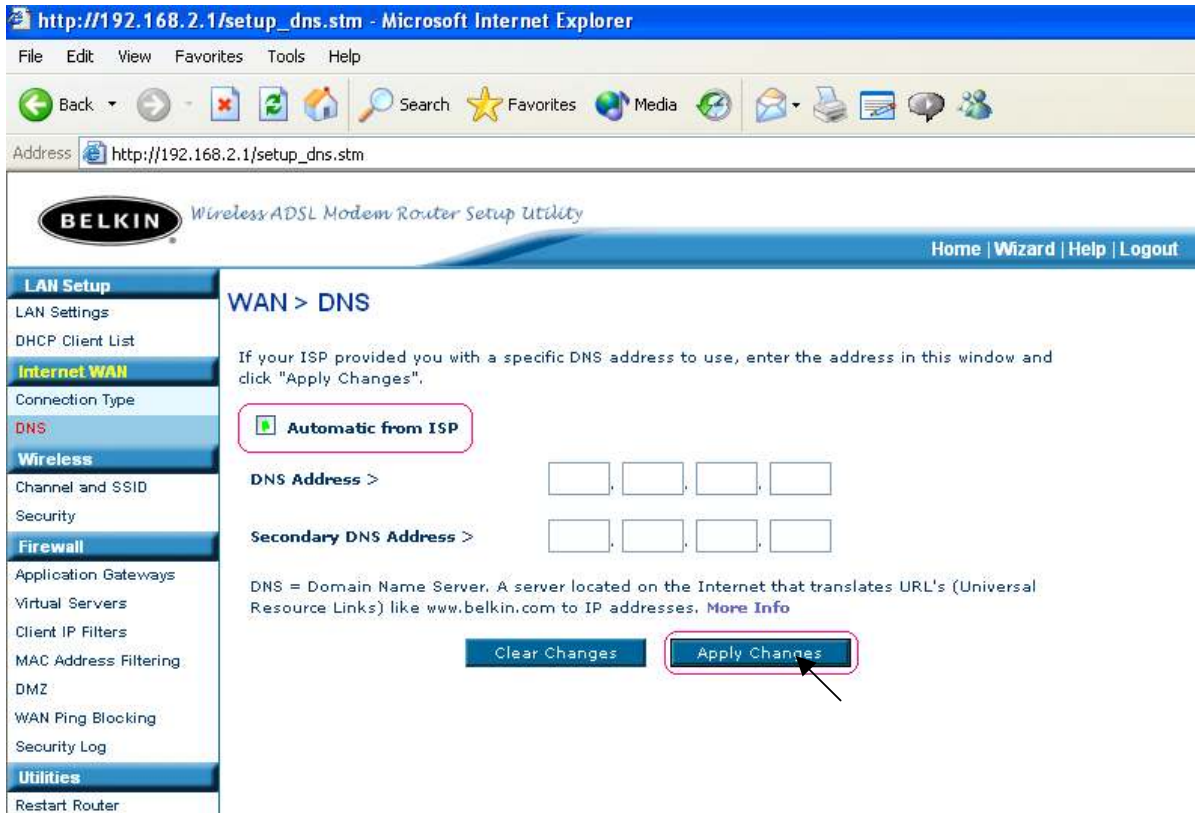


If you have more options as Encapsulation and MTU, it should be VC-MUX and 1454.

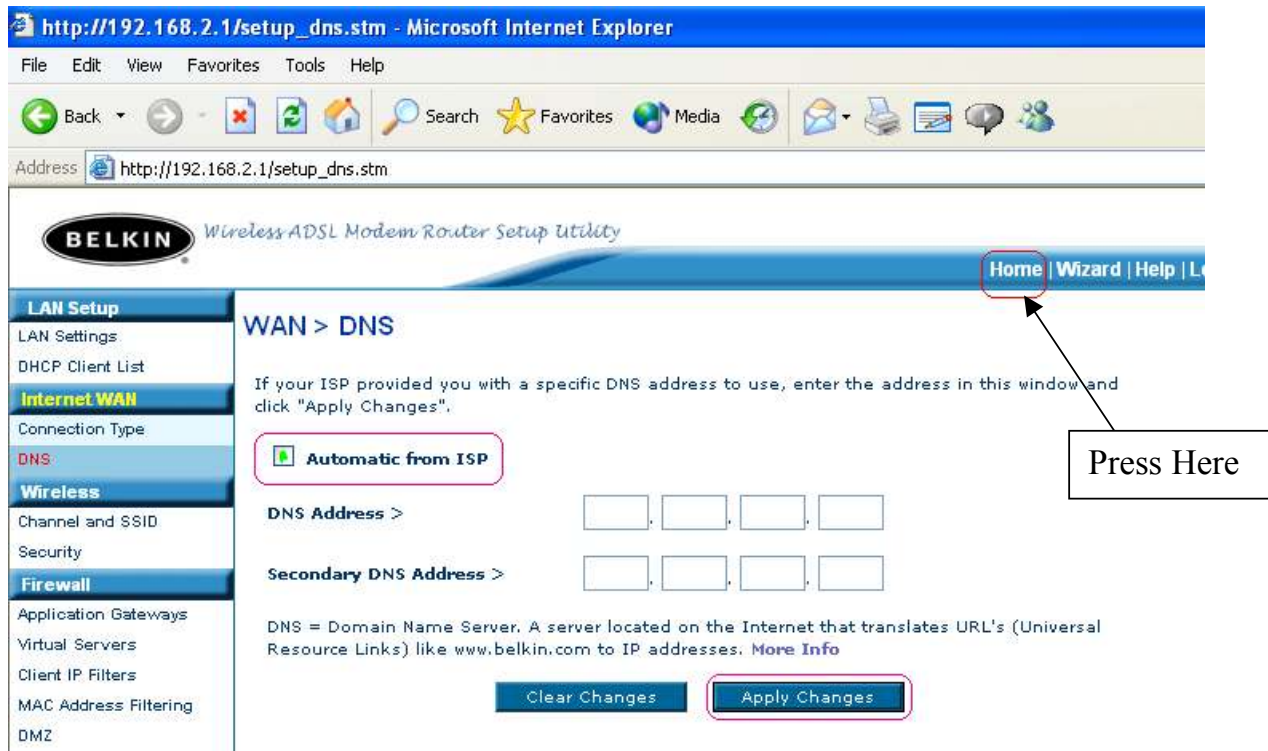
The press “Apply changes” and it will save the data:



3. You should get a web page like this now:
4. Apply Changes



Then you will get to the same page, go to "Home"



You will go to a web page like this:

Press on “Connect”

And then in “Internet Status” on top of the page, it should say “**Connected**”

BELKIN Wireless ADSL Modem Router Setup Utility

Home | Wizard | Help | Logout | Internet Status: No Co

LAN Setup

- LAN Settings
- DHCP Client List

Internet WAN

- Connection Type
- DNS

Wireless

- Channel and SSID
- Security

Firewall

- Application Gateways
- Virtual Servers
- Client IP Filters
- MAC Address Filtering
- DMZ
- WAN Ping Blocking
- Security Log

Utilities

- Restart Router
- Restore Factory Default
- Save/Backup Settings
- Restore Previous Settings
- Firmware Update
- System Settings

Status

Setup Wizard

Disconnect **Connect**

Version Info

Runtime Code Version	0.77b (Oct 30 2003 14:49:22)
Boot Code Version	V1.3C
Hardware Version	01A
Serial Num	A342039019
ADSL Modem Code Version	13.9.218

Internet Settings

WAN MAC Address	00-30-BD-FF-42-B1
Cable/DSL	DISCONNECTED

LAN Settings

LAN MAC Address	00-30-BD-FF-42-B1
IP Address	192.168.2.1
Subnet Mask	255.255.255.0
DHCP Server	Enabled

Features

Firewall	Enabled
Wireless	Enabled
SSID	DE Modem Router
WLAN MAC Address	00-30-F1-9B-4A-4
Subnet Mask	255.255.255.0
UPnP	Disabled

By Now, you should have internet, please try!!!