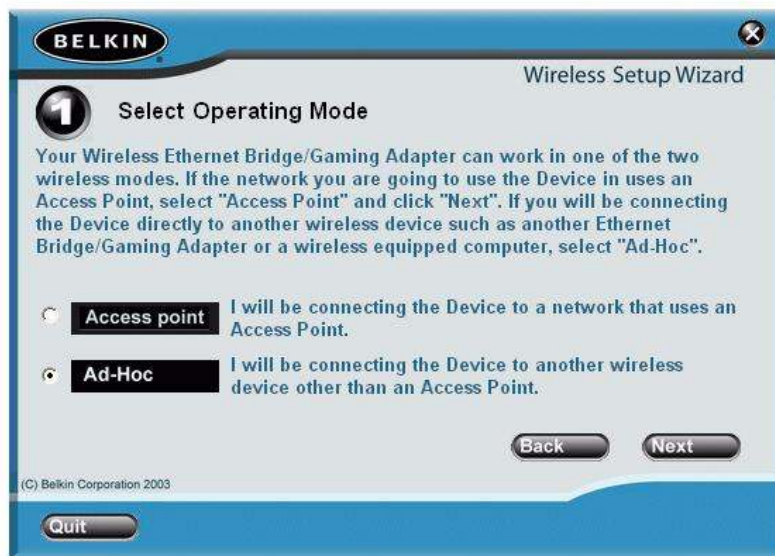


F5D7330 Peer to Peer

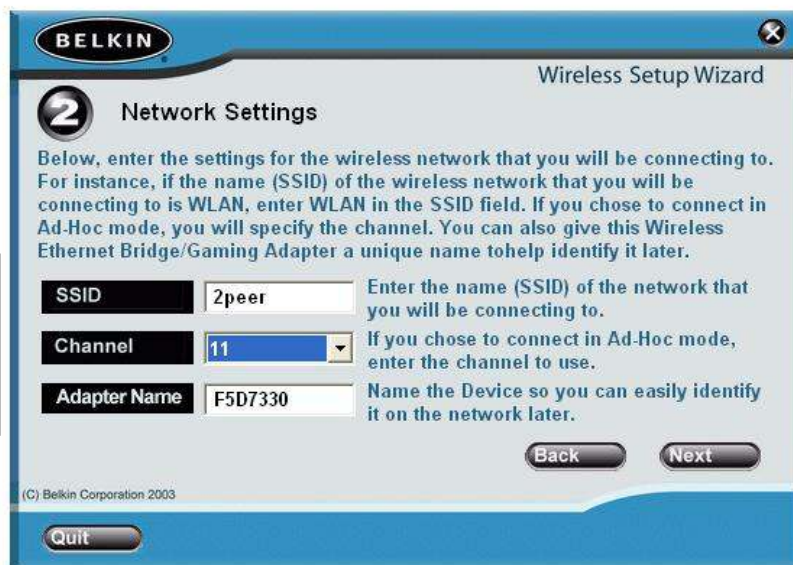
Before you begin, make sure the Ad-hoc network is set-up on the computer with the Internet connection and that Internet connection sharing is enabled. Once the connection has been established the IP addresses will be automatically assigned.

If you configure the unit to be an Ad-hoc device then other devices will be able to scan to find it and then connect to it

Run the CD, select the device from the list, then select the Ad-Hoc option



Enter the SSID of the network. Adapter name is not important.



Channel number also needs to match the network.

Alternatively you can go through the Web manager. 192.168.2.225. Under the section, Bridge Settings. Here you will be able to set up a Peer to Peer network

Or use the Site Survey option in the Web manager.

LAN Settings

Adapter Name > FSD7330

IP Configuration > Manually set the Adapter's IP address
 Obtain an IP address from a DHCP server [More Info](#)

IP Address > 192 . 168 . 2 . 225 [More Info](#)

Subnet Mask > 255 . 255 . 255 . 0 [More Info](#)

Gateway IP Address > 192 . 168 . 2 . 225

Wireless Settings

SSID > ANY [Site Survey](#)

Mode > Infrastructure (Network uses an AP)
 Ad-Hoc (Peer-to-Peer)

Channel > 11 [More Info](#)

WEP Encryption > none [More Info](#)

Authentication Mode > open+shared

Key ID > 1

Network Key > Set with Passphrase
 Use Hex Key

[Clear Changes](#) [Apply Changes](#)

Site Survey

Settings > Site Survey

The Section Site Survey Should show a page similar to this one. If not then hit the button, Refresh

Site Survey List : [Refresh](#)

SSID	SSID/MAC Address	Network Type	Encryption	Channel	Signal Strength	Join
WLAN-THRO	00:01:24:F1:4b:ec	Infrastructure	No	04	-26 dBm	<input type="checkbox"/>
myatt_AP	00:30:bd:94:72:b0	Infrastructure	No	10	-26 dBm	<input type="checkbox"/>
DennisK	00:30:F1:ae:80:62	Infrastructure	No	11	-26 dBm	<input type="checkbox"/>
Training 7x00	00:30:F1:b1:ed:47	Infrastructure	No	11	-26 dBm	<input type="checkbox"/>
WLAN-MO	00:01:24:F0:1F:54	Infrastructure	Yes	11	-45 dBm	<input type="checkbox"/>
RAGNAROK	00:30:bd:96:62:91	Infrastructure	Yes	11	-26 dBm	<input type="checkbox"/>

[Clear Changes](#) [Apply Changes](#)

The page is self explanatory. Simply tick the box 'Join' next to the chosen network, then click on Apply changes.

Things to remember

To reset the device, hold down the reset button for 7 seconds. The Wireless light on the front will start flashing very quickly.

The default IP address is 192.168.2.225. In order to access the 7330 via the web manager the IP address of the computer connected to the 7330 needs to be in the same range.