



**54g**

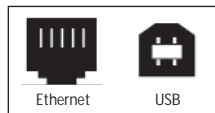
## Connecting and Configuring your Wireless Router

Verify the contents of your box. You should have the following:

- 54g Wireless Cable/DSL Gateway Router
- Vertical Mounting Base (optional use)
- Category 5 Networking Cable (for connection of the Router to the computer)
- Power Supply
- Belkin Easy Install Wizard Software CD
- User Manual
- This Quick Installation Guide

### Modem Requirements

Your cable or DSL modem must be equipped with an RJ45 Ethernet port. Many modems have both an RJ45 Ethernet port and a USB connection. If you have a modem with both Ethernet and USB, and are using the USB connection at this time, you will be instructed to use the RJ45 Ethernet port during the installation procedure. If your modem has only a USB port, you can request a different type of modem from your ISP, or you can, in some cases, purchase a modem that has an RJ45 Ethernet port on it.



### Easy Install Wizard

Belkin has provided our Easy Install Wizard software to make installing your Router a simple and easy task. You can use it to get your Router up and running in minutes. The Easy Install Wizard requires that your Windows® 98, Me, 2000, or XP computer be connected directly to your cable or DSL modem and that the Internet connection is active and working at the time of installation. If it is not, you must use the "Alternative Setup Method" section of the User Manual to configure your Router. Additionally, if you are using an operating system other than Windows 98, Me, 2000, or XP, you must set up the Router using the "Alternative Setup Method".

# 1

## Run the Easy Install Wizard Software

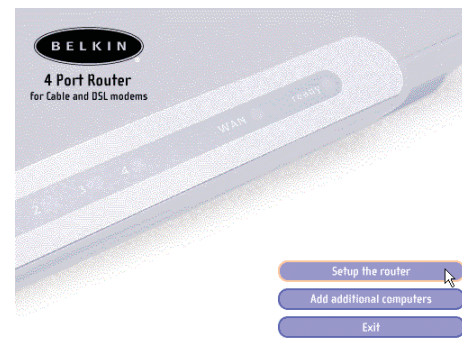
**IMPORTANT:** Run the Easy Install Wizard from the computer that is directly connected to the cable or DSL modem. **DO NOT CONNECT THE ROUTER AT THIS TIME.**

1. Shut down any programs that are running on your computer at this time.
2. Make sure you have the following items at the computer that is now directly connected to the cable or DSL modem. **DO NOT CONNECT THE ROUTER AT THIS TIME.**
  - The Easy Install Wizard CD-ROM
  - The Router
  - The Router power supply
  - Category 5 networking cable
  - This Quick Installation Guide
3. Turn off any firewall or Internet connection sharing software on your computer.
4. Insert the Easy Install Wizard software CD into your CD-ROM drive. The Easy Install Wizard screen will automatically appear on your screen within 15 seconds. If it does not, select your CD-ROM drive from "My Computer" and double-click on the file named "Setup" on the CD-ROM.

# 2

## Follow the Easy Install Wizard to Complete the Installation

Click on "Set Up the Router" to begin.

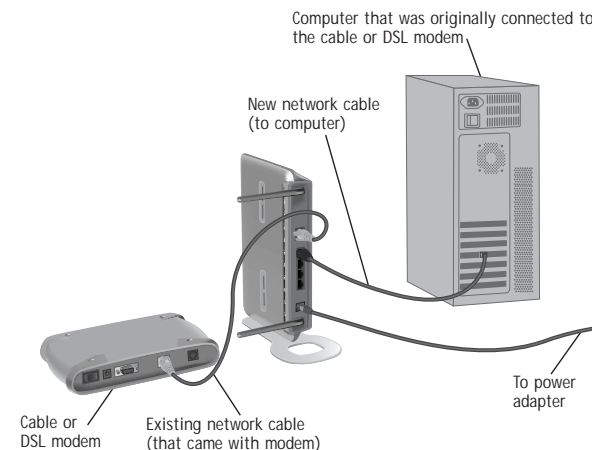


# 3

## Connect the Router to your Modem and Computer

The Wizard will ask you to connect your Router. Follow the steps on the screen, or do the following:

1. Turn off the power to your modem by unplugging the power supply from the modem.
2. Locate the network cable that is connected between your modem and your computer and unplug it from your computer, leaving the other end connected to your modem.
3. Plug the loose end of the cable you just unplugged into the port on the back of the Router labeled "Internet/WAN".
4. Connect the new network cable from the back of the computer to one of the ports labeled "1-4". *Note: It does not matter which numbered port you choose.*



**3**

### Connect the Router to your Modem and Computer contd.

5. Turn on your cable or DSL modem by reconnecting the power supply to the modem.
6. Before plugging the power cord into the Router, plug the cord into the wall, then plug the cord into the Router's power jack.
7. Verify that your modem is connected to the Router by checking the lights on the front of the Router. The green light labeled "WAN" should be ON if your modem is connected correctly to the Router. If it is not, recheck your connections.
8. Verify that your computer is connected properly to the Router by checking the lights labeled "LAN 1,2,3,4". The light which corresponds to the numbered port that you connected your computer to should be ON if your computer is connected properly.

**4**

### Continue Following the Wizard's Instructions

The Wizard will take you through the completion of the process.

**5**

### Begin Surfing!

Congratulations! You have finished installing your new Belkin Router.



belkin.com

#### Belkin Corporation

501 West Walnut Street  
Compton • CA • 90220 • USA  
Tel: 310.898.1100  
Fax: 310.898.1111

#### Belkin Components, Ltd.

Express Business Park  
Shipton Way • Rushden • NN10 6GL  
United Kingdom  
Tel: +44 (0) 1933 35 2000  
Fax: +44 (0) 1933 31 2000

#### Belkin Components B.V.

Starparc Building • Boeing Avenue 333  
1119 PH Schiphol-Rijk • The Netherlands  
Tel: +31 (0) 20 654 7300  
Fax: +31 (0) 20 654 7349

#### Belkin, Ltd.

7 Bowen Crescent • West Gosford  
NSW 2250 • Australia  
Tel: +61 (0) 2 4372 8600  
Fax: +61 (0) 2 4372 8603

#### Belkin Tech Support

US: 310.898.1100 ext. 2263  
800.223.5546 ext. 2263  
Europe: 00 800 223 55 460  
Australia: 1800 666 040

P74223