

Make sure you have the following:



Installation Software CD



Gigabit Desktop Network PCI Card



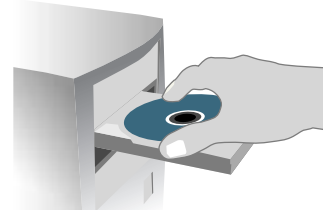
Ethernet Cable (not included)

System Requirements

PC-compatible desktop computer with one available PCI slot and a CD-ROM drive. Windows® 98SE, 2000, Me, XP

Quick Setup →

1. Install



Important Note: Install the software before inserting the Card.

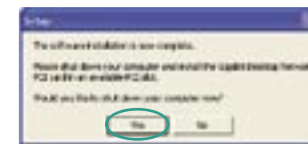


- 1.1 Insert the CD into your CD-ROM drive.
- 1.2 The Belkin Setup Utility screen will automatically appear.
- 1.3 In the "Menu" window, drag your mouse over the "Install" button, then click on the words "Click here" located to the right side of the "Install" button to start the software installation program.

(click) [Click here](#)



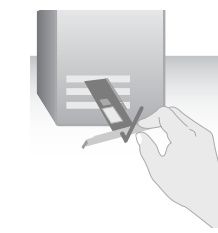
1.4 The installer will now start.



1.5 After the installation is complete, click "Yes" to shut down your computer.

(click) [Yes](#)

2. Connect



Insert the Card into the Computer



- 2.1 Remove the screws behind your computer case that secure the computer cover and remove cover.
- WARNING:** Be sure to power off your computer and disconnect your power cord before opening up your computer.
- 2.2 Touch any metal part of the case to discharge static electricity, which could damage your product or your computer.
- 2.3 Locate an empty PCI expansion slot. It is usually white in color.
- 2.4 Confirm that the Card will fit into the slot you have chosen.



- 2.5 Remove the metal port cover from the back of the computer that corresponds to the PCI slot you selected. If there is a screw, place it in a safe place, as you will be using it to attach the Card to the computer later.
- 2.6 Push the Card firmly into the PCI slot that you have chosen. Apply pressure as needed until the connector is fully seated.
- 2.7 Now secure the Card with the screw that you previously placed in a safe place.
- 2.8 Replace the computer's cover. Now that the Card is installed, you can reconnect the power cord, and turn it back on.

NOTE:

If the Setup Utility screen does not appear within 20 seconds, open up your CD-ROM drive by double-clicking on the "My Computer" icon. Then, double-click on the folder named "Files". Next, double-click on the icon named "Setup.exe".

3. Configure



Let Windows Finish the Installation



- 3.1** After powering on your computer, you will see a “Found New Hardware Wizard” screen. Select “Install the software automatically (Recommended)” and click “Next”.

(click) **Next**



- 3.2** Depending on the version of Windows you are using, you might also see a screen similar to this one. This **DOES NOT** mean there is a problem as the drivers have been fully tested and are compatible with this Windows operating system. Select “Continue Anyway” and follow the on-screen instructions.

(click) **Continue Anyway**

NOTE:

Specific screens differ depending upon which version of the Windows OS you are using.

NOTE:

Specific screens differ depending upon which version of the Windows OS you are using.



- 3.3** Windows will ask you where the drivers are located. Make no changes and click “Next” until you see the screen that asks you to click “Finish” to complete the installation.

(click) **Finish**

Now that the network card is installed, you need to plug one end of your Ethernet cable into the RJ45 port of your network card. The other end of the Ethernet card should be plugged into a router, switch, or any other available networking outlet.

Installation is now complete!

Need help? For further information regarding the installation of this product, visit: www.belkin.com/networking or call our free technical support. Technical support contact information can be found on the back page of this Quick Installation Guide.

BELKIN®

**Gigabit Desktop
Network PCI Card**



Belkin Tech Support
US: 877.736.5771
310.898.1100 ext. 2263
Europe: 00 800 223 55 460
Australia: 1800 666 040

Belkin Corporation
501 West Walnut Street
Compton • CA • 90220 • USA
Tel: 310.898.1100
Fax: 310.898.1111

Belkin, Ltd.
Express Business Park • Shipton Way
Rushden • NN10 6GL • United Kingdom
Tel: +44 (0) 1933 35 2000
Fax: +44 (0) 1933 31 2000

© 2004 Belkin Corporation. All rights reserved. All trade names are registered trademarks of respective manufacturers listed.

Belkin, Ltd.
7 Bowen Crescent • West Gosford
NSW 2250 • Australia
Tel: +61 (0) 2 4372 8600
Fax: +61 (0) 2 4372 8603

Belkin B.V.
Starpac Building • Boeing Avenue 333
1119 PH Schiphol-Rijk • The Netherlands
Tel: +31 (0) 20 654 7300
Fax: +31 (0) 20 654 7349

BELKIN®

**Gigabit Desktop
Network PCI Card**

Start Here →



**Quick Installation
Guide**

