

IMPORTANT!

This Guide refers to the following Products:



F1UP0001

Using The F1UP0001 With Windows Vista

Please read the following carefully;

Synopsis:

The software supplied with the F1UP0001 does not function under Windows Vista.

This guide will assist you in adding a TCP/IP port so that the you can use the F1UP0001 under Windows Vista

Requirements:

F1UP0001

Computer running Windows Vista

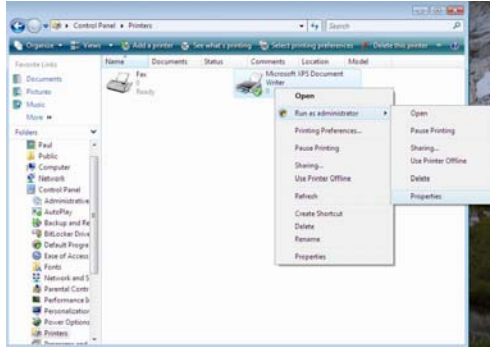
Printer already installed (Connected To Port1)

IP address of the F1UP0001

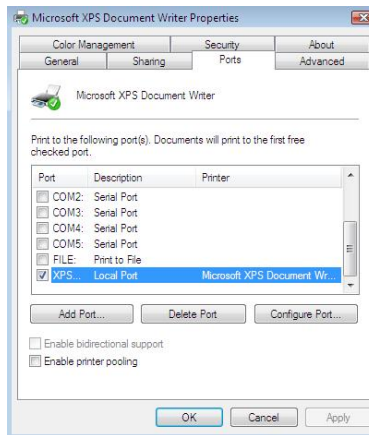
Adding A TCP/IP Port Under Windows Vista

Open the printer folder located in control panel

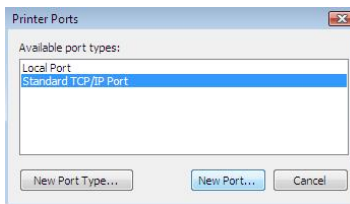
Right click on your installed printer and select “Run As Administrator”, then select properties



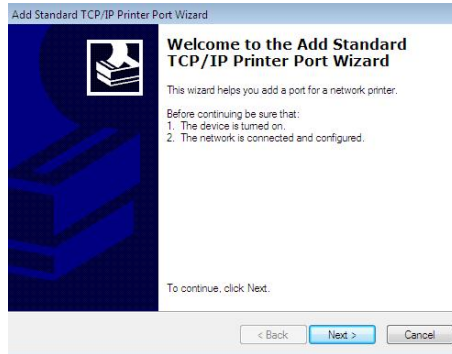
Select the tab labelled “Ports”



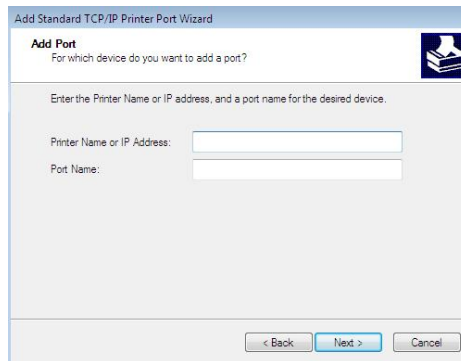
Click the button labelled “Add Port”



Ensure that “Standard TCP/IP Port” is selected and then click “New Port”



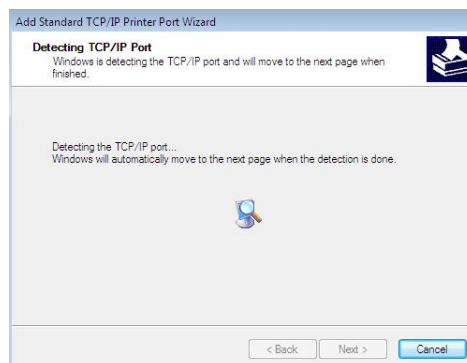
Click “Next”



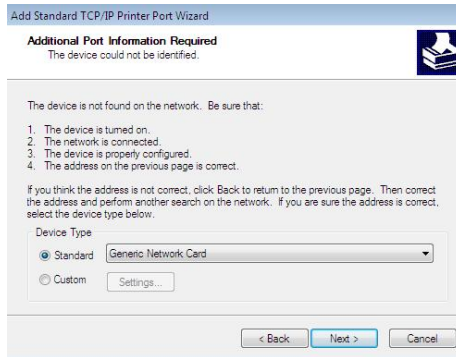
Enter the IP address of your F1UP0001 in the box titled “Printer name or IP Address” (This will ensure that all the information sent to printer will be directed to the printer server)

Once complete click “Next”

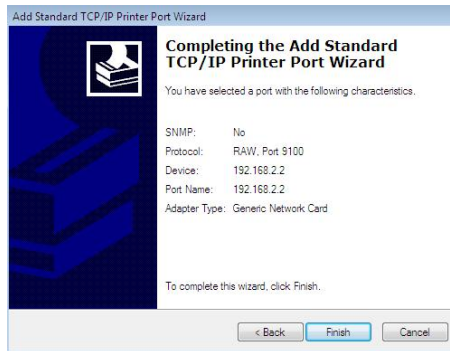
Windows will then automatically attempt to detect the print server



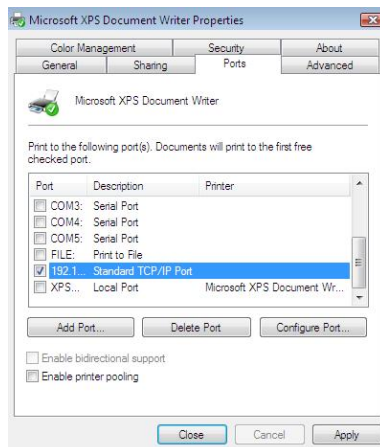
Windows will then fail to detect the print server (this is normal)



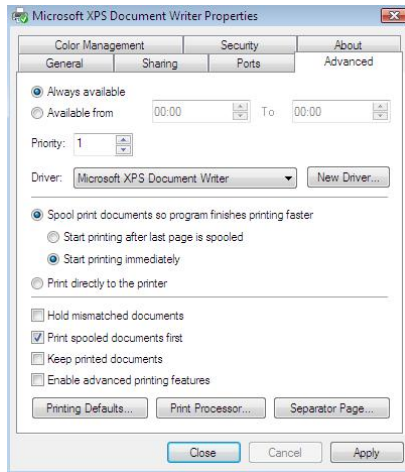
Ensure “Standard – Generic Network Card” is selected then click next
Windows will then complete the installation of the TCP/IP port



Close down the add port window
You will then notice that a new port has been added



Select the tab labelled “Advanced”



Ensure that the option “Enable advanced printing features” is not selected

Click “Apply”

Click O.K.

You will now be able to print via the F1UP0001