

Belkin Bulldog

**Shutdown Management Software
for Mac OS 9.0.4 & Higher**



Table of Contents

- Introduction..... 3
- Installing Bulldog..... 4
- Main Window..... 6
- File Menu..... 8
- Configure Menu..... 9
- Control UPS..... 13
- Service and Support..... 14

Introduction

Congratulations on your purchase of Belkin Bulldog to manage your Uninterruptible Power Supply (UPS). Bulldog is designed to provide end users the ability to take proactive steps to protect their equipment from power related damages. Bulldog allows for automatic shutdowns, scheduled shutdowns and a variety of other features that help you manage your system and its peripheral components.

Bulldog provides detailed information about the UPS and its protected equipment. It is easy to install and program, yet has the necessary features to handle all of one' s power requirements.

Bulldog runs in the background from the operating system, and communicates with the UPS in order to ensure that your computer and attached components are protected from any power problems.

Features:

1. Graceful operating system shutdown
2. Scheduled shutdowns and restarts of the operating system
3. Real-time status displays
4. Support unattended file saving of Apple Works, Microsoft Word and Microsoft Excel
5. Cancel or save specified applications or scripts before shutdown



Installing Bulldog

1. System Requirements:

Hardware: Apple Macintosh series with PowerPC CPU and USB port.

Software: Mac OS 9.0.4 or higher is recommended. If your Mac OS version is 9, you can use the built-in software updated control panel that goes on line to get the latest OS changes.

2. Installing Belkin Bulldog:

1. Turn off the system.
2. Attach the electrical power cable from the computer to the UPS.
3. Attach the electrical power cable from the UPS to an AC power outlet.
4. Plug the USB cable into the UPS, then plug the other end of the cable into the USB port on your Macintosh.
5. Start your system.
6. Insert the installation CD into the CD-ROM drive. Drag a copy of the BULLDOG.HQX file to anywhere on the Macintosh' s hard disk. We recommended you create a folder called **Bulldog** and copy it to the folder.
7. Launch the Stuffit Expander to decode the BULLDOG.HQX file. The Stuffit Expander is usually located in the Startup Disk: Internet: Internet Utilities: Aladdin: Stuffit Expander Folder. Select the Expand from the File menu. A dialog box will be pop up to the front on the screen. Change the directory to where the BULLDOG.HQX file located and select the file then press the Expand button. An application named Bulldog will be created in the same directory.
8. Highlight the **Bulldog** on your hard disk and select the "Make Alias" from the file menu of the Finder. Drag the alias to the Startup folder in the System Folder on your hard disk.
9. Start **Bulldog** and see the Menu-Configure for instructions on how to configure **Bulldog** for your system.
10. **Bulldog** should now be operating correctly, check that it is listed under Finder in the Applications Menu at the rightmost corner of the menu bar.



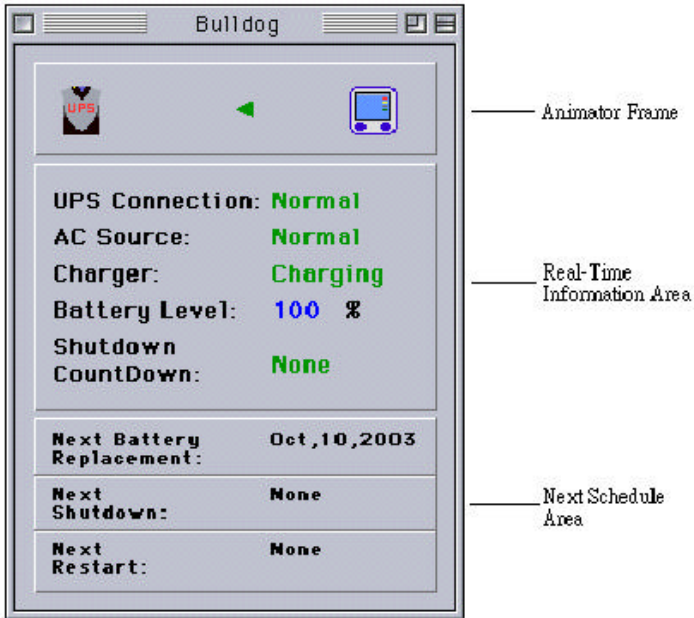
3. Troubleshooting:

If the **Bulldog** program can not run in your computer, you should press the ' Shift Key' when you restart your OS, then remove the **Bulldog** program from the ' Startup Folder' .

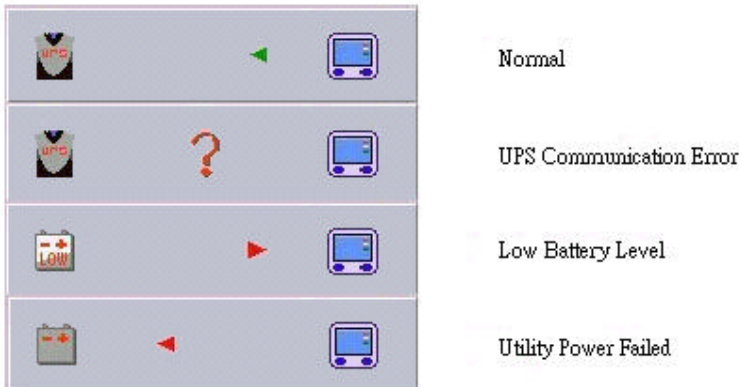


Main Window

The following picture shows the main window of **Bulldog**. **Bulldog** enables you to control and configure the UPS through drop down menus and the dialog boxes.



1. **Animator frame:** This area shows you the current UPS status.



- a. Normal: The UPS is working normally.
- b. Utility power failed: Input power has been lost and the UPS is operating on battery power only.
- c. Low battery level: The UPS is operating on battery power and the battery capacity will soon be drained.
- d. UPS communication error: The computer does is not receiving any information from the UPS. Please check the USB cable.

2. Real-time information area: Displays the status of the UPS.

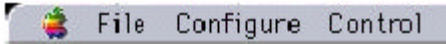
- a. UPS Connection: Indicates the UPS communication status.
- b. AC Source: Indicates the output source in from the AC utility or battery.
- c. Charger: The charger should always be in the charging status except for when the utility power has failed.
- d. Battery level: Displays the current volume of battery.
- e. Shutdown countdown: Displays the shutdown countdown time. You should save your opened documents and prepare to shutdown your computer before the countdown time reaches zero.

3. Schedule area: Displays the battery replacement date and the next schedule instance for shutdown and restart.

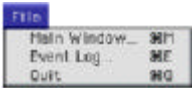


Menu

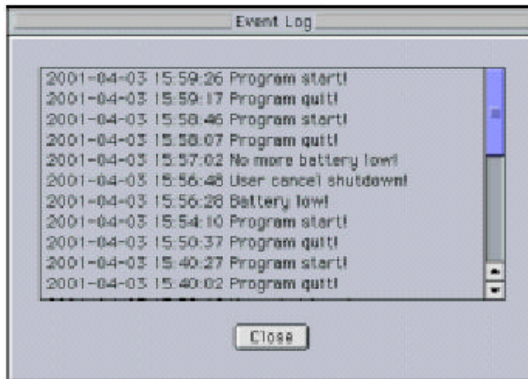
The **Bulldog** program has a menu bar with 3 main options: File, Configure and Control.



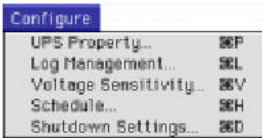
File Menu



- Main Window: Displays the main window screen.
- Event Log: Allows end user to view the historical event logs.
- Quit: Terminates the **Bulldog** program.



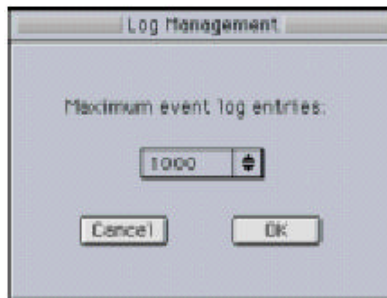
Configure Menu



- UPS Property: Indicates the last and next battery replacement dates and the value of battery low level, and allows the end user to set the parameters for the next occurrence. When the UPS battery level is equal to or less than the value that you have assigned, the **Bulldog** program will start the shutdown countdown.



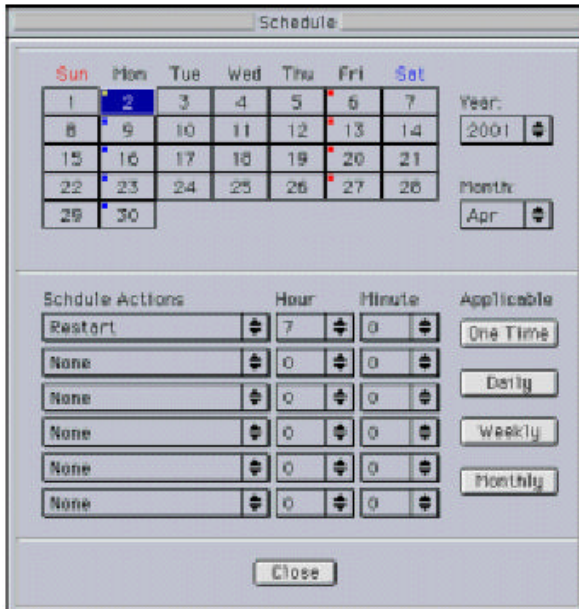
- Log Management: **Bulldog** saves the assigned entries of the event log according to the settings you place.



- c. Voltage Sensitivity: Adjusts the UPS voltage sensitivity.

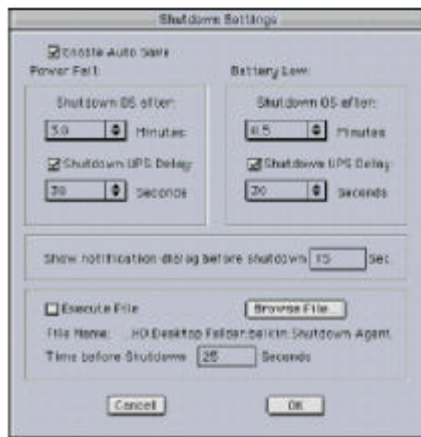


- d. Schedule: This function allows you to schedule a shutdown and restart. You can schedule up to 6 events. Settings are based on day, week or month and up to a period of 2 years.

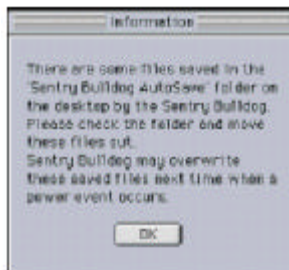


Choose the applicable schedule and assign the settings for:

- i. One Time: This set schedule is applicable for a single day.
 - ii. Daily: This set schedule is applicable for every day.
 - iii. Weekly: This set schedule is applicable for a once a week period.
 - iv. Monthly: This set schedule is applicable for a once a month period.
- e. Shutdown Settings: Allows you to shutdown your OS and UPS smoothly when utility power fails or the battery level get too low.



- i. Enable Auto Save: **Bulldog** can save Microsoft Word, Microsoft Excel and AppleWorks documents for you when power anomalies occur. If **Bulldog** has saved any files for you, it will display a warning message to you when **Bulldog** runs next time.



- ii. Shutdown OS After: This sets the delay, in minutes, between switching to battery power and starting the shutdown process.
- iii. Shutdown UPS Delay: this option activates after the Shutdown OS timer delay has expired and the shutdown process is ready to start. It allows the UPS to sustain power until the OS can be shutdown completely.
- iv. Show notification dialog before shutdown: Displays a warning dialog at the set time before computer shutdown.



- v. Execute File: Enable this option if you need to execute an external application before computer shutdown.
- vi. Browse File: Press this button to display an open dialog.
- vii. File Name: Displays the specified application name.
- viii. Time before Shutdown: Sets the time needed to execute the specified application before computer shutdown.



Control Menu

Control	
Shutdown Now...	ESC
Cancel Shutdown	ESC
Turn UPS Buzzer On	ESC
Turn UPS Buzzer Off	ESC
10 Seconds Test	
Cancel Test	

- a. Shutdown Now: This function lets you shutdown your computer and UPS immediately. To restart your UPS, you have to set a next restart schedule in advance and mark the Restart UPS check box.



- b. Cancel Shutdown: This menu enables you to terminate the current shutdown procedure.
- c. Turn UPS Buzzer On: Enable the UPS buzzer.
- d. Turn UPS Buzzer Off: Disable the UPS buzzer.
- e. 10 Seconds Test: UPS switches to the backup mode and the output power is supplied by battery for 10 seconds.
- f. Cancel Test: This function allows you to stop testing the UPS immediately.



Service and Support

Corporate Headquarters

Belkin Corporation

501 West Walnut Street

Compton • CA • 90220-5221 • USA

Tel: 310.898.1100

Fax: 310.898.1111

Customer Service/Sales:

800.2BELKIN

800.223.5546

Technical Support:

310.898.1100 ext. 2263

800.223.5546 ext. 2263

Fax: 310.604.2089

techsupp@belkin.com

belkin.com/support/tech

United Kingdom

Belkin Components, Ltd.

Express Business Park

Shipton Way • Rushden • NN10 6GL

United Kingdom

Tel: +44 (0) 1933 35 2000

Fax: +44 (0) 1933 31 2000

Belkin Components



France

Belkin SAS Components
5 rue du Petit Robinson
78 350 Jouy en Josas • France
Tel: +33 (0) 1 34 58 14 00
Fax: +33 (0) 1 39 46 62 89

Germany

Belkin Components GmbH
Hanebergstrasse 2
80637 • München • Germany
Tel: +49 (0) 89 143405 0
Fax: +49 (0) 89 143405 100

The Netherlands

Belkin Components B.V.
Starparc Building • Boeing Avenue 333
1119 PH Schiphol-Rijk • The Netherlands
Tel: +31 (0) 20 654 7300
Fax: +31 (0) 20 654 7349

European Customer Service/Sales:
00 800 223 55 460
eurosales@belkin.com

European Tech Support:
00 800 223 55 460
eurosupport@belkin.com



Australia

Belkin, Ltd.

7 Bowen Crescent • West Gosford • NSW 2250 Australia

Tel: +61 (0) 2 4372 8600

Fax: +61 (0) 2 4372 8603

Tech Support:

Australia Toll Free 1800 666 040

New Zealand Toll Free 0800 441 913

Singapore Toll Free 800 6161 790

belkin.com/anz

China

Belkin Shanghai Representative Office

Suite 31 • 39/F • Plaza 66

1266 Nanjing West Road

Shanghai • 200040 • China

Tel: 8621-62881747

Fax: 8621-62881748

Customer Service/Sales:

china@belkin.com

Tech Support:

800-820-5816

