

**Disabling the mouse acceleration in Windows Login Screen**  
**F1DP108G, F1DP116G**

**Symptoms:**

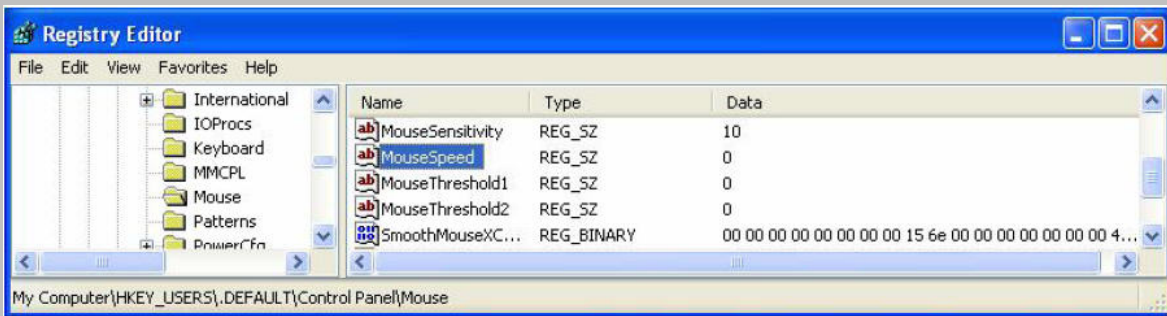
Mouse synchronization does not work in Windows login screen. After you login to the Window the mouse synchronization starts to work properly. The mouse acceleration is disabled in Windows and the mouse mode is set to Direct 1:1 mouse mode in the SMB IP KVM remote interface

**Cause:**

The mouse acceleration in Windows NT4, 2000, XP, 2003 Server is set per user profile. Before you login onto the Windows, the default user profile is applied. If you disable the mouse acceleration for your user profile, then the mouse synchronization will work properly after you login onto this user profile, but it will fail in the login screen. Registry editing is required in order to disable the mouse acceleration in login screen

**Resolution:**

Open your registry and find the key below:



Set the values to 0 for the following keys: MouseSpeed, MouseThreshold1, MouseThreshold2

Registry Settings	
Key: [HKEY_USERS\.\DEFAULT\Control Panel\Mouse]	
Value Name	Value Data
MouseSpeed	0
MouseThreshold1	0
MouseThreshold2	0

*Note: You must be logged as Administrator on the computer to make the registry changes.*

**Comments:**

Disclaimer: Backup the registry before making changes to it. Modifying the registry can cause serious problems that may require you to reinstall your operating system. We cannot guarantee that problems resulting from modifications to the registry can be solved. Use the information provided at your own risk.