

BELKIN[®]

Cable-Free USB Hub



User Manual

F5U301

Table of Contents

1. Introduction	1
Features	3
System Requirements	3
Package Includes	3
Technical Specifications.....	4
2. Installation.....	6
3. Operation	10
4. Troubleshooting.....	18
5. Technical Specifications.....	22
6. Information	24

Introduction

1

2

3

4

5

6



Figure 1: USB Dongle



Figure 2: Wireless Hub

Introduction

Features

- Wireless connectivity through USB for printers, cameras, scanners, and other devices to your computer, from up to 30 ft. away
- Reduced cable clutter
- Data-transfer speeds of up to 480Mbps for USB 2.0 devices
- Ports for linking up to 4 high- or low-speed devices with your computer
- Belkin Lifetime Warranty

System Requirements

For PC Users

- Pentium® processor-based computer with Hi-Speed USB 2.0 port available
- Windows® XP with Service Pack 2

Package Includes

- Cable-Free USB Hub
- Cable-Free USB Dongle
- Power Adapter
- Installation CD
- User Manual

1

2

3

4

5

6

Introduction

Belkin unleashes USB.

Congratulations and thank you for purchasing the Belkin Cable-Free USB Hub. This revolutionary product lets you connect all your USB devices to your computer—wirelessly. Now you can print, play music, scan, download photos, and burn CDs from anywhere in the room, from up to 30 feet away, without the hassle of connecting cables. The Hub is easy to use and gives you the freedom to roam—and stay connected.

Please review this User Manual carefully so that you are sure to get the most from your Cable-Free USB Hub.

1

2

3

4

5

6

Introduction

1

Technical Specifications

Upstream Ports: 1

2

Downstream Ports: 4

Per-Port Voltage: 5V

3

Per-Port Current: 500mA

Power Mode: Self

4

Operating Temperature: 41° to 104° F (5° to 40° C)

Storage Temperature: -4° to 140° F (-20° to 60° C)

5

Power Supply:

Output: 5V, 2.6mA

6

Plug Size: 3.5mm

Plug Polarity: Center-pin
positive

Main-Power-LED Color

Definitions

Green: Constant on when 5V DC
is applied

Port-Status-LED Color

Definitions

Green: Blinks rapidly to indicate
Rx/Tx traffic

Introduction

Certifications

FCC

1

Humidity

5% to 95% non-condensing

2

Chipset

Wisair

3

Ports

4 USB A

4

Indicator-Light Status

Individual-status LED for each downstream port

Power LED

5

Power Supply

5V

6

Operating Range

Up to 30 ft.

Installation

1

The following diagram illustrates the basic steps in connecting and getting started with the dongle.

2

Note: Do not attach the USB dongle before the host drivers are installed.

3



Step 1

Install software and drivers from the included CD-ROM.

4

5



Step 2

Connect the USB Dongle to the PC and approve the multiple-driver installation.

6

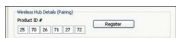


Step 3

Connect the included power adapter to the Cable-Free USB Hub.

Step 4

Open the Wireless Hub utility from the system tray and register the product ID number found on the bottom of the Hub. Then, approve the final driver installation on the PC.



Step 5

Connect USB peripherals to the Cable-Free USB Hub.



Installation

After you install the software and drivers, connect the dongle to a free USB 2.0 port on your computer. The Windows Hardware Installation Wizard automatically registers the corresponding drivers.

Note: If a previous installation of USB drivers already exists in your PC, uninstall the previous version using the uninstall utility (select “Start > Programs > Belkin >”).

Install the USB Drivers and Software

Ensure that your PC system hardware and software are both operational.

1. Insert the Belkin driver-installation CD.
 - a. After a few moments, the setup application should appear on your computer screen.
 - b. If the setup application does not appear, double-click on “My Computer”, then click on your CD-ROM-drive icon. This will load the setup application’s main page.
2. Click the “Install Driver” button.
3. The InstallShield Wizard starts.
4. When the Device Driver Installation Wizard appears, click “Next” to install the device drivers.
5. Click “Finish”.
6. Click “Finish” again to exit the Wizard.

1

2

3

4

5

6

Installation

1

Connecting the USB Dongle

2

1. Place the Hub no more than three feet from the dongle.
2. Power OFF the Hub and disconnect it from all USB devices (e.g., cameras, hard drives, scanners).

3

3. Ensure that the dongle and Hub are facing each other.

4

4. Connect the USB dongle to the PC's high-speed USB port. The system will automatically detect and complete installation of the drivers for the connected dongle.

5

5. Restart your computer.

6

Connecting the Hub

1. Ensure that the Hub is switched OFF.
2. Place the Hub within three feet from the dongle. Ensure that the two units are facing each other.
3. Connect the power adapter to the Hub. Check that the LEDs light.
4. To complete installation of the final driver, follow the instructions for the registration of the product ID number in the section "Registration (Pairing)", on page 14 of this User Manual.
5. Restart your computer.

To verify a successful installation, run the Windows Device Manager utility ("Start > Run > devmgmt.msc") and verify that it recognizes the new drivers that were installed. You should see the following names: UWB Dongle Control, USB Composite Device, UWB Dongle over USB, and Wireless Hub Device.

Installation

Uninstalling the Software

If you need to uninstall the software, you can do so by using the automatic uninstaller or by using the “Windows Control Panel > Add or Remove Programs” utility.

To uninstall the software:

1. Detach the dongle from the USB port of the PC.

1.1 Select “Uninstall Wireless Hub” from “Start > Programs > Wireless Hub”.

OR

1.2 Use the “Windows Control Panel > Add or Remove Programs” utility under “Wireless Hub”.

1

2

3

4

5

6

Operation




1

Status Indication

When the Belkin Connection Manager is up, the Belkin icon displays in the Windows System Tray. The color of the icon indicates the current activity state, as follows:

2

3

Icon Color	Status
	Enabled (yellow icon) USB dongle is connected to the computer (dongle is enabled, no wireless connection is detected)
	Connected (green icon) A wireless connection is established with the Hub
	Disabled (red icon) USB dongle is disabled (and no connection available)

4

5

6

Operation

Configuration Properties

The dongle “Hardware Properties” screen provides direct access to the dongle hardware configuration.

To open the “Properties” screen, right-click on the Belkin icon and select “Properties” from the context menu.

The following table explains the properties that can be configured or viewed:

Property	Description
Connection Status	
Operating State	Disabled/Disconnected/ Connected
Signal Strength	0–100%
Transmit Rate Select	Auto/480/400/320/200/160/106.7/ 80/53.3Mbps
Channel Select	Auto-Detect /A/B/C/D/E (see Table 1: Wireless channel selection)
Current Channel	A/B/C/D/E (see Table 1: Wireless channel selection)
Cable-Free USB Hub Details	
Product ID#	Enables the registration of the Cable-Free USB Hub product ID number in order to allow association/connection
Register/Un-Register	Registers (associates) or un-registers (disassociates) the Cable-Free USB Hub of the given product ID number

1

2

3

4

5

6

Operation

1

2

3

4

5

6

Property	Description
Dongle Status	
Reset	Resets the connection/ disassociates Cable-Free USB Hub and restarts scanning
Disable/Enable	Turns off dongle to save PHY power
Packets Sent/Packets Received	Packets sent (by dongle) Packets received (from Hub)
Dongle Details	
Description	Belkin Cable-Free USB dongle (HWA531)
Product ID	Unique hardware identification number
Firmware Version	Host-firmware version
Driver Version	Belkin PC-driver version

Table 1: Wireless channel selection

Belkin Channel Name	TFC Channel	Band Search Pattern
A	TFC1	F ₁ F ₂ F ₃ F ₁ F ₂ F ₃
B	TFC2	F ₁ F ₃ F ₂ F ₁ F ₃ F ₂
C	TFC5	F ₁ F ₁ F ₁ F ₁ F ₁ F ₁
D	TFC6	F ₂ F ₂ F ₂ F ₂ F ₂ F ₂
E	TFC7	F ₃ F ₃ F ₃ F ₃ F ₃ F ₃

1

2

3

4

5

6

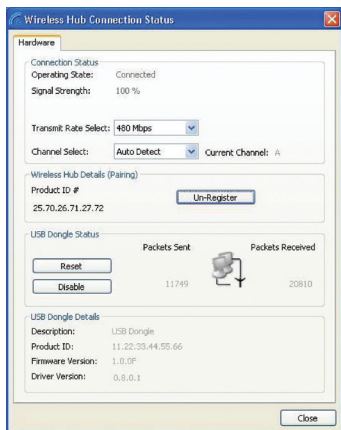


Figure 3: Cable-Free USB Hub Connection Status screen

Operation

1

Pairing and Association/Connection

Once the Hub is powered up and completes its initialization, it is ready for association. First-time association occurs after manually registering the product ID number of the Hub with the PC. This is also called “pairing” the two entities.

2

3

After the first-time connection/association, future association is handled automatically, so that no user intervention is necessary.

4

5

Registration (Pairing)

To register the product ID number:

6

1. Open the “Cable-Free USB Hub Connection Status” screen (double-click the CM tray icon).
2. In the “Cable-Free USB Hub Details (Pairing)” section, enter the product ID number found on the bottom of the Hub. (There are six pairs of character/digit combinations in the product ID.)

Wireless Hub Details (Pairing)

Product ID #

25	70	26	71	27	72
----	----	----	----	----	----

Register

3. Press “Register” to finalize the registration/pairing. Once the product ID number is accepted, the product ID numbers are displayed as read-only, and the button is labeled “Un-Register”.

Wireless Hub Details (Pairing)

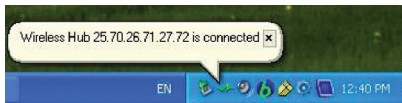
Product ID #

25.70.26.71.27.72

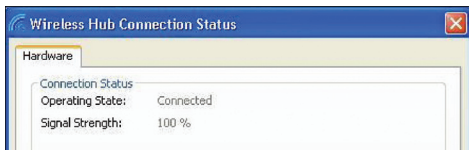
Un-Register

Operation

4. Following registration/pairing, association/connection is established, and a tool tip is displayed in the System Tray area showing the product ID number and a message that the Hub is connected with the PC as shown in the image below.



5. Check the “Operating State” field in the “Cable-Free USB Hub Connection Status” screen to see if the status changes from “Disconnected” to “Connected”.



Automatic Association

After the first manual association, the same Hub is automatically associated to the same computer whenever the Hub operates within range. To associate to another Hub, you must manually un-register the previous Hub by pressing “Un-Register”, which causes the Hub to disassociate from the computer.

1

2

3

4

5

6

Operation

1

Changing Association/Registration (Pairing)

To change the association/registration from one Hub to another:

2

1. In the “Hub Connection Status” screen, click “Un-Register”.

3

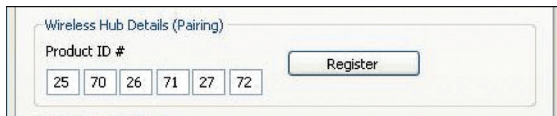


4

5

2. Enter the product ID number of the Hub to which you want to associate and press “Register”.

6



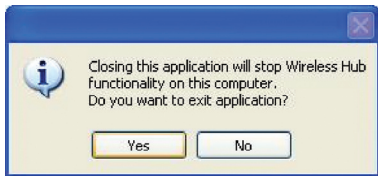
3. A tool tip is displayed in the System Tray area, containing the product ID and a message that the Hub is now connected with the PC.
4. Check the “Operating State” field to see if the status changes from “Disconnected” to “Connected”.

Operation

Closing the Connection Manager Application

To shut down the Connection Manager:

1. Right-click the tray icon and select “Exit”.



2. Click “Yes” to confirm that you want to shut down the application.

Maintenance

The following sections provide maintenance information and troubleshooting advice.

1

2

3

4

5

6

Troubleshooting

1

Dongle LED Indicator

2

3

4

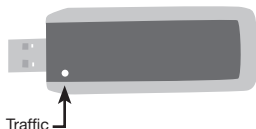


Figure 4: Dongle LED Indicator

Traffic: Flashes green when packets are received.

5

Hub LED Indicators

6

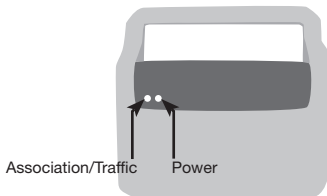


Figure 5: Cable-Free USB Hub LED Indicators

Power: Constant on when 5V DC is applied.

Association with Dongle/Traffic Indicator: Blinks slowly when a new device is connected to the Hub; blinks rapidly to indicate Rx/Tx traffic with your peripheral device.

Troubleshooting

Channel Busy

If the user selects a specific channel (frequency range) and the dongle (after scanning) finds it cannot be the master on that channel, an information message window will display automatically. This is the result of more than one dongle present in the same range.



Figure 6: Channel-busy message

To resolve this conflict, select a different channel or “Auto Detect” in the “Connection Manager Properties” screen of one of the dongles.

Support for USB Classes

Audio devices (“USB Audio” class) and some webcams (“USB Video” class), which have isochronous end points, are not supported by the Hub.

Wireless Link Out of Range

If you are experiencing frequent wireless-link breaks, the Hub may be out of range—the solution is to shorten the range between the dongle and Hub.

1

2

3

4

5

6

Troubleshooting

1

Extended or External Wired USB Hub Connections

If you are connecting the dongle to a PC via an external wired USB hub, we recommend that you:

2

- Apply external power to the wired USB hub.
- Do not use the external hub during initial connect and driver installation.

3

4

5

6

Troubleshooting

Reading Software and Firmware Versions

In order to ensure that you are working with the latest version of software and hardware, you can check the versions of each component as follows:

Belkin application

In “Control Panel > Add or Remove Programs > Cable-Free USB Hub > Click here for support information” for the automatically installed application.

PC host drivers version

Right-click the tray icon, and select “Properties”. Read the “Driver Version” field in the “Cable-Free USB Dongle Details” section.

Cable-Free USB

dongle firmware version

Right-click the tray icon, and select “Properties”. Read the “Firmware version” field in the “Cable-Free USB Dongle Details” section.

Cable-Free USB Hub firmware version

Use a serial connector to connect via HyperTerminal application and view the firmware version in the command prompt of the Cable-Free USB Hub.

1

2

3

4

5

6

Technical Specifications

1

Model Number HWA531 — Cable-Free
USB dongle

2

DWA531 — 4-port Cable-Free
USB Hub

3

UWB Chipset Belkin 531 MAC/BB chip,
Belkin 502 RF chip

4

Operational Range Up to 30 to 60 ft. (10 to 20m)

5

PHY Data Rate Up to 480Mbps (automatically
or manually selected)

6

Frequency Range 3.1GHz to 4.8GHz; supporting
3 sub-bands, 528MHz each

RF Modulation Type Multiband OFDM

Max. Output Power 80 μ W (-41.25 dBm/MHz max.)

Max. Power Consumption HWA531 — 1.75W (350mA
max. @ 5VDC from USB port)

DWA531 — 3W (600mA @
5VDC from external
power supply)

USB End-Point Types Bulk in/out, Interrupt, Control

Number of End Points 32 end points

USB Power Drive Powers up to 4 USB external
devices (500mA @ 5VDC each)

USB Association Type Host GUI-based association

LED Indicators Power, Association, Traffic

PCB Size HWA531 — 25 by 69mm
DWA531 — 38 by 92mm

Technical Specifications

Antenna	HWA531 — UWB on-board omnidirectional antenna	1
	DWA531 — UWB 2 internal omnidirectional antennas	2
Operating Temperature Range	5° C to 50° C	3
Operational Humidity	10–95%	4
PHY Compliance	Complies with WiMedia® PHY spec. rev. 1.0	4
FCC Compliance	Complies with FCC CFR 47 Part 15 subpart F; UWB intentional radiation	5
USB Hub Compliance	Complies with USB 2.0/1.1	6
OS Compliance	Microsoft® Windows XP SP2; Windows Plug-and-Play-compliant	
Coexistence	Coexists with standard WiMedia devices	
	Coexistence with co-located additional dongles or UWB systems (FFI, TFI schemes)	

Information

1

FCC Statement

DECLARATION OF CONFORMITY WITH FCC RULES FOR ELECTROMAGNETIC COMPATIBILITY

We, Belkin International, Inc., of 501 West Walnut Street, Compton, CA 90220, declare under our sole responsibility that the product: F5U301

to which this declaration relates:

Complies with Part 15 of the FCC Rules. Operation is subject to the following two conditions: (1) this device may not cause harmful interference, and (2) this device must accept any interference received, including interference that may cause undesired operation. This equipment may only be operated indoors. Operation outdoors is in violation of 47 U.S.C. 301 and could subject the operator to serious legal penalties.

2

3

4

5

6

CE Declaration of Conformity

We, Belkin International, Inc., declare under our sole responsibility that the F5U301, to which this declaration relates, is in conformity with Generic Emissions Standard EN55022:1998 Class B, EN50081-1, and with Generic Immunity Standard EN50082-1:1992.

Belkin International, Inc., Limited Lifetime Product Warranty

What this warranty covers.

Belkin International, Inc., warrants to the original purchaser of this Belkin product that the product shall be free of defects in design, assembly, material, or workmanship.

What the period of coverage is.

Belkin International, Inc., warrants the Belkin product for the lifetime of the product.

What will we do to correct problems?

Product Warranty.

Belkin will repair or replace, at its option, any defective product free of charge (except for shipping charges for the product).

Information

What is not covered by this warranty?

All above warranties are null and void if the Belkin product is not provided to Belkin International, Inc., for inspection upon Belkin's request at the sole expense of the purchaser, or if Belkin International, Inc., determines that the Belkin product has been improperly installed, altered in any way, or tampered with. The Belkin Product Warranty does not protect against acts of God (other than lightning) such as flood, earthquake, war, vandalism, theft, normal-use wear and tear, erosion, depletion, obsolescence, abuse, damage due to low voltage disturbances (i.e. brownouts or sags), non-authorized program, or system equipment modification or alteration.

How to get service.

To get service for your Belkin product you must take the following steps:

1. Contact Belkin International, Inc., at 501 W. Walnut St., Compton CA 90220, Attn: Customer Service, or call (800)-223-5546, within 15 days of the Occurrence. Be prepared to provide the following information:
 - a. The part number of the Belkin product.
 - b. Where you purchased the product.
 - c. When you purchased the product.
 - d. Copy of original receipt.
2. Your Belkin Customer Service Representative will then instruct you on how to forward your receipt and Belkin product and how to proceed with your claim.

Belkin International, Inc., reserves the right to review the damaged Belkin product. All costs of shipping the Belkin product to Belkin International, Inc., for inspection shall be borne solely by the purchaser. If Belkin determines, in its sole discretion, that it is impractical to ship the damaged equipment to Belkin International, Inc., Belkin may designate, in its sole discretion, an equipment repair facility to inspect and estimate the cost to repair such equipment. The cost, if any, of shipping the equipment to and from such repair facility and of such estimate shall be borne solely by the purchaser. Damaged equipment must remain available for inspection until the claim is finalized. Whenever claims are settled, Belkin International, Inc., reserves the right to be subrogated under any existing insurance policies the purchaser may have.

How state law relates to the warranty.

THIS WARRANTY CONTAINS THE SOLE WARRANTY OF BELKIN INTERNATIONAL, INC., THERE ARE NO OTHER WARRANTIES, EXPRESSED OR, EXCEPT AS REQUIRED BY LAW, IMPLIED, INCLUDING THE IMPLIED WARRANTY OR CONDITION OF QUALITY, MERCHANTABILITY OR FITNESS FOR A PARTICULAR PURPOSE, AND SUCH IMPLIED WARRANTIES, IF ANY, ARE LIMITED IN DURATION TO THE TERM OF THIS WARRANTY.

1

2

3

4

5

6

Information

1

Some states do not allow limitations on how long an implied warranty lasts, so the above limitations may not apply to you.

2

IN NO EVENT SHALL BELKIN INTERNATIONAL, INC., BE LIABLE FOR INCIDENTAL, SPECIAL, DIRECT, INDIRECT, CONSEQUENTIAL OR MULTIPLE DAMAGES SUCH AS, BUT NOT LIMITED TO, LOST BUSINESS OR PROFITS ARISING OUT OF THE SALE OR USE OF ANY BELKIN PRODUCT, EVEN IF ADVISED OF THE POSSIBILITY OF SUCH DAMAGES.

3

This warranty gives you specific legal rights, and you may also have other rights, which may vary from state to state. Some states do not allow the exclusion or limitation of incidental, consequential, or other damages, so the above limitations may not apply to you.

4

5

6

BELKIN®

Cable-Free USB Hub

BELKIN®

www.belkin.com

Belkin Tech Support

US: 310-898-1100, ext. 2263
800-223-5546, ext. 2263

UK: 0845 607 77 87

Australia: 1800 235 546

New Zealand: 0800 235 546

Europe: www.belkin.com/support

Belkin International, Inc.

501 West Walnut Street
Los Angeles, CA 90220, USA
310-898-1100
310-898-1111 fax

Belkin Ltd.

Express Business Park, Shipton Way
Rushden, NN10 6GL, United Kingdom
+44 (0) 1933 35 2000
+44 (0) 1933 31 2000 fax

Belkin B.V.

Boeing Avenue 333
1119 PH Schiphol-Rijk, The Netherlands
+31 (0) 20 654 7300
+31 (0) 20 654 7349 fax

Belkin Ltd.

4 Pioneer Avenue
Tuggerah Business Park
Tuggerah, NSW 2259, Australia
+61 (0) 2 4350 4600
+61 (0) 2 4350 4700 fax