

Configuring the F5D8000/F5D8010 to work with Windows Vista

Although the F5D8000 and F5D8010 are not officially supported for use with Windows Vista, the procedure below has been tested by Belkin Technical Support on Windows Vista RC2.

If you are using the F5D8000 (PCI card + F5D8010) then please insert the PCI card only in a free PCI slot on your pc before proceeding. Then download the latest version of the software from the Belkin website

For the **F5D8010** - <http://www.belkin.com/support/download/downloadaddetails.asp?lang=1&download=1469>

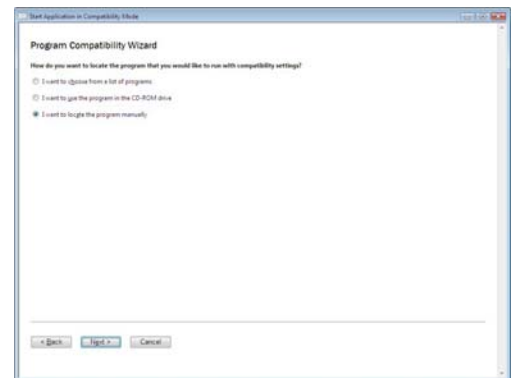
For the **F5D8000** - <http://www.belkin.com/support/download/downloadaddetails.asp?lang=1&download=1568>

The file that has been downloaded will be installed using Program Compatibility wizard (a feature built-in Windows Vista that allows programs to be installed that are not designed for vista but for other Windows Operating Systems).

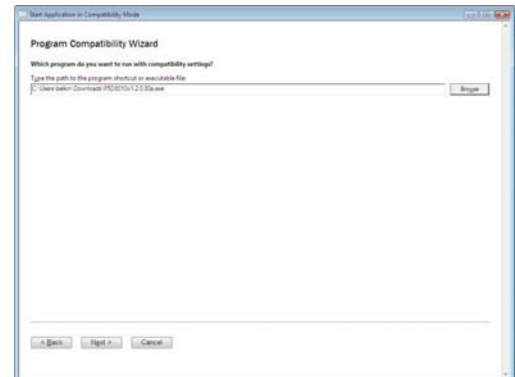
Click start and then Help and support. In the Search Bar type "Program Compatibility wizard".

Search result no 1. will state: "Start the Program Compatibility Wizard". Please select this. Now select "click to open Program Compatibility Wizard"

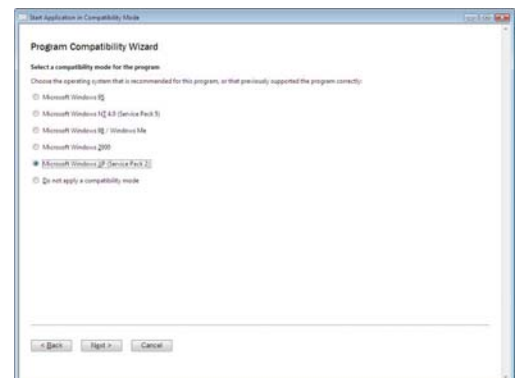
From this screen select the last option " I want to locate program manually" and press next.

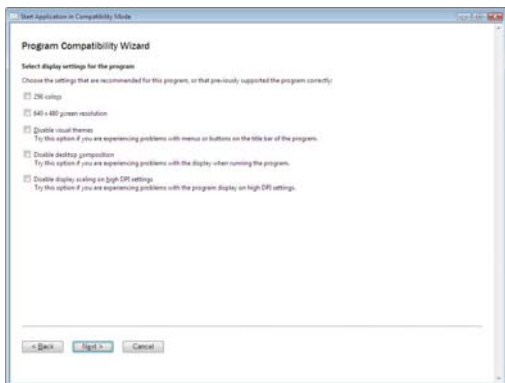


Browse to location where you stored the downloaded file (see action 1) and press next



From the list now presented select "Microsoft Windows XP (Service Pack 2)" and press next

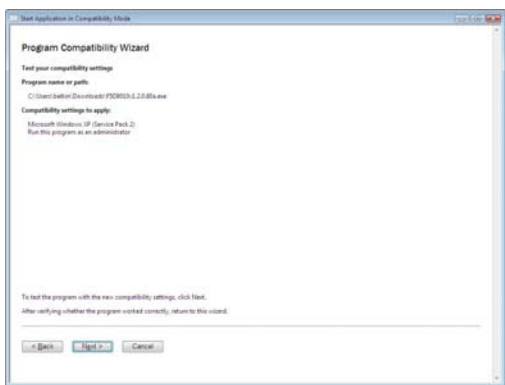




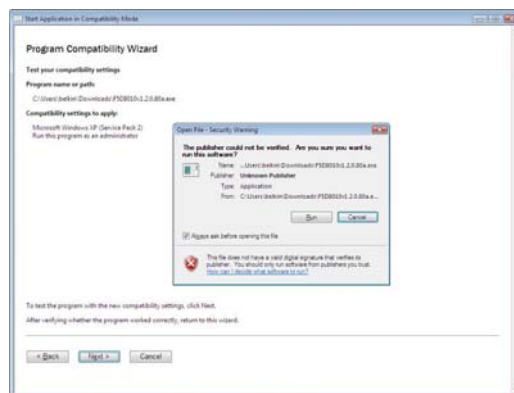
On this screen you will not have to choose anything, just press next



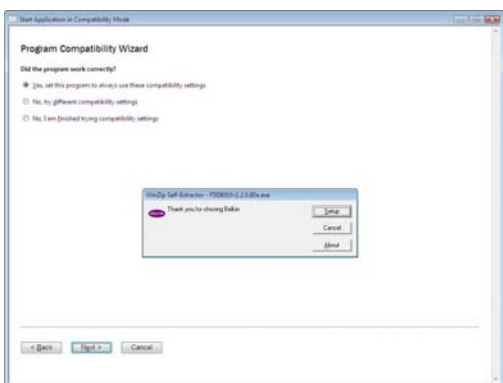
Tick the option "Run this Program as administrator" and press next



This screen is the summary screen, just press next



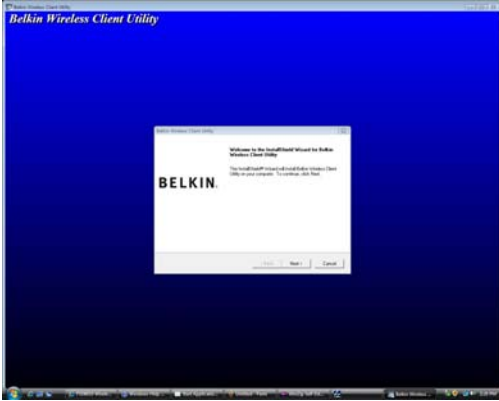
A security warning message will pop-up asking you if you would like to install the software, just select run. You might be prompted again and will have to select "allow program to run"



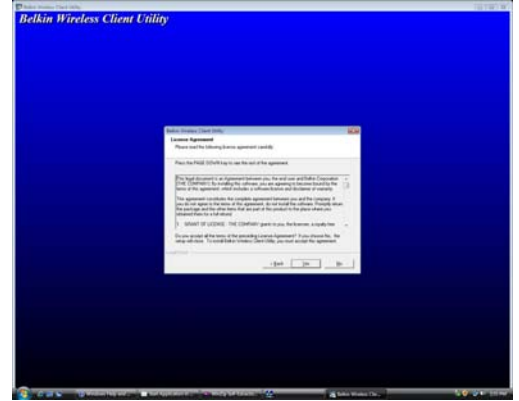
The normal Belkin installation wizard will appear, select setup.



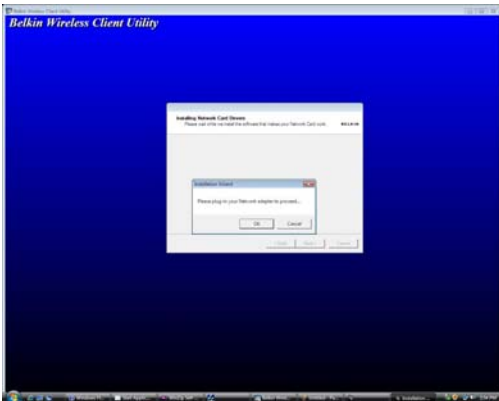
And then select install software – and the normal Belkin installation wizard will start.



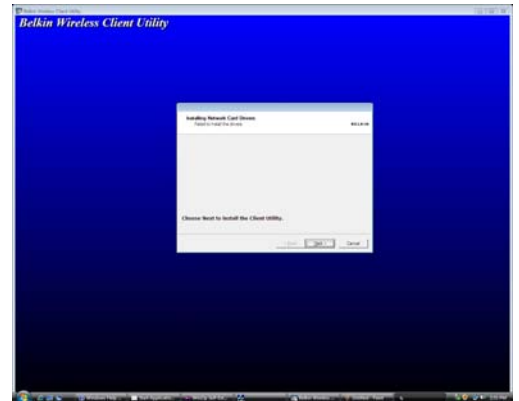
Select next



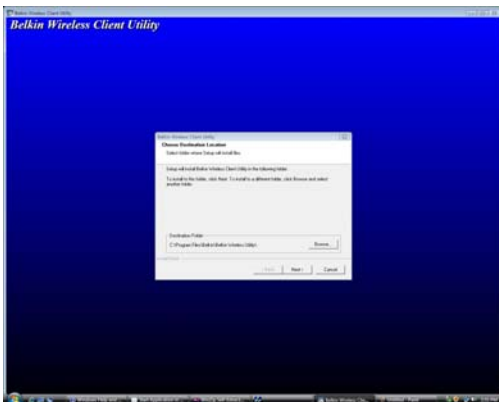
And select yes



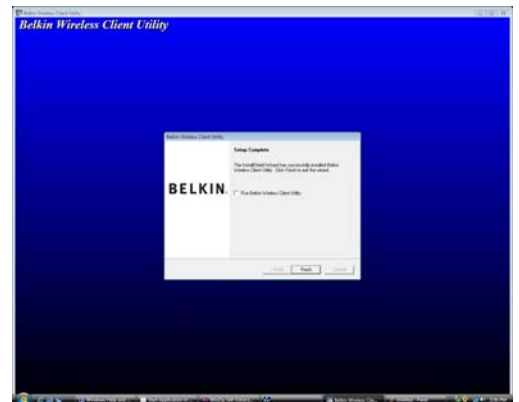
You will now be prompted to insert the Wireless Card, **Don't do this now**, simply press cancel to continue



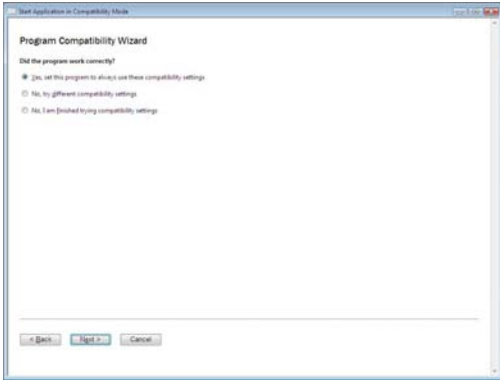
You will be prompted to install the wireless client utility, press next



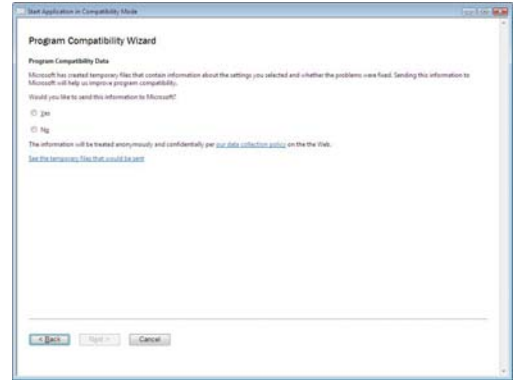
And again press next



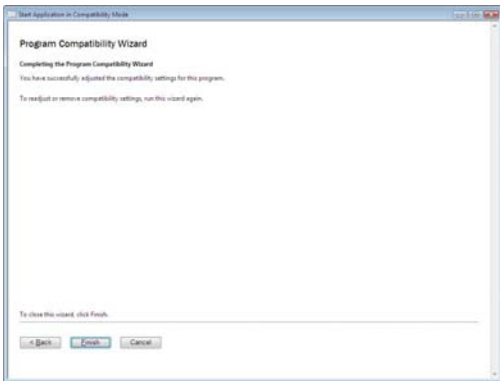
Untick "Run Belkin Wireless Client Utility" and press finish



Leave the selection to “yes set this program to always use these compatibility settings”



You will be asked to send some info to Microsoft about this installation, choose what you like.



And finally press finish and plug your card in. Now use Windows Vista Wireless Configuration to configure your wireless network.