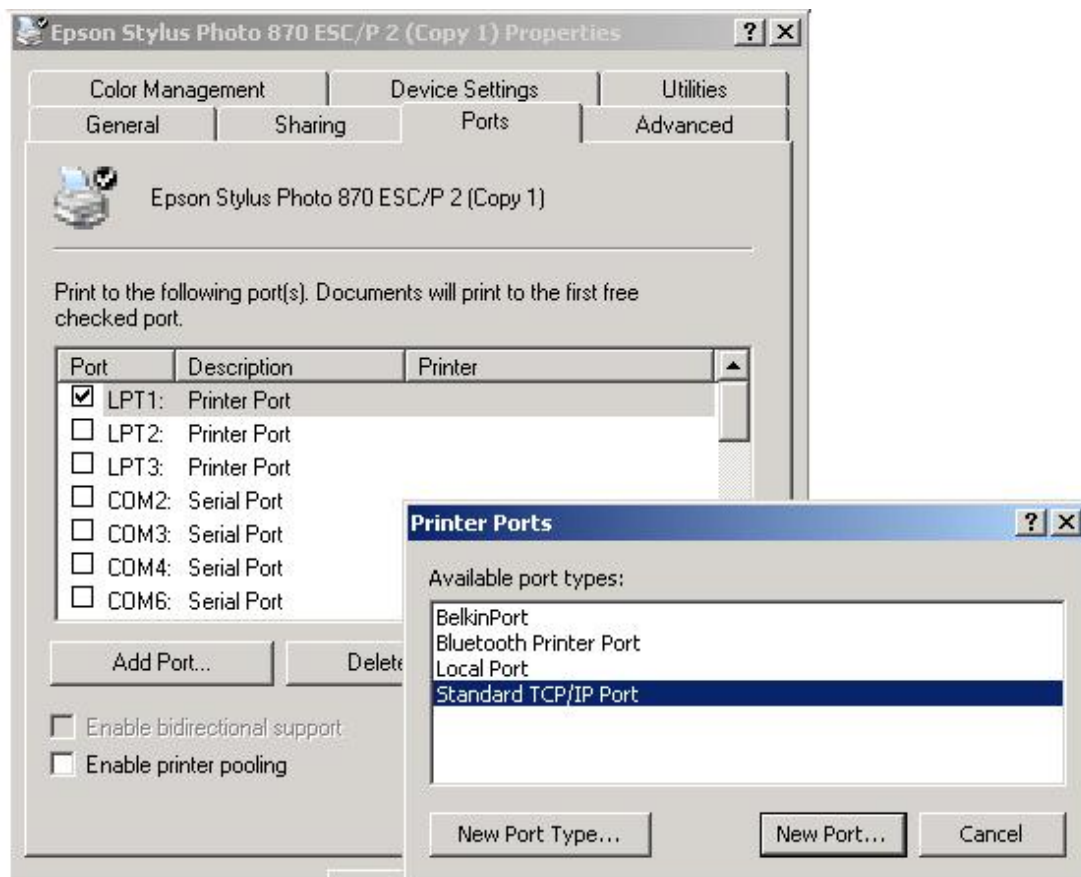


## F1UP0001 and F5D7231 PRINT SERVER set up

An alternative to using the Belkin software which seems to be problematic the Print server on the new router and the wireless print server can be set up manually using TCP/IP.

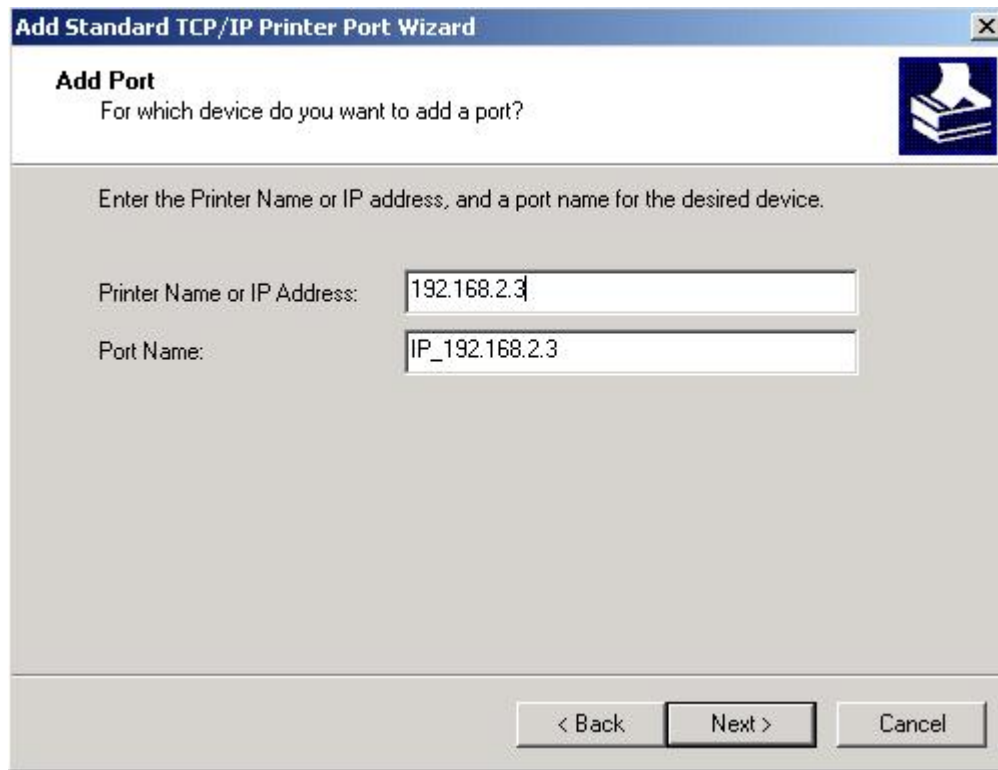
The only setting that needs to be known before running through the following set-up is the IP address of the print server. In the case of the F5D7231 it will be the normal 192.168.2.1 but obviously in the case of the F1UP0001 you will need to look in the DHCP client list of the router.

### 1. Open the printer properties and click on Add Port, select TCP/IP port.

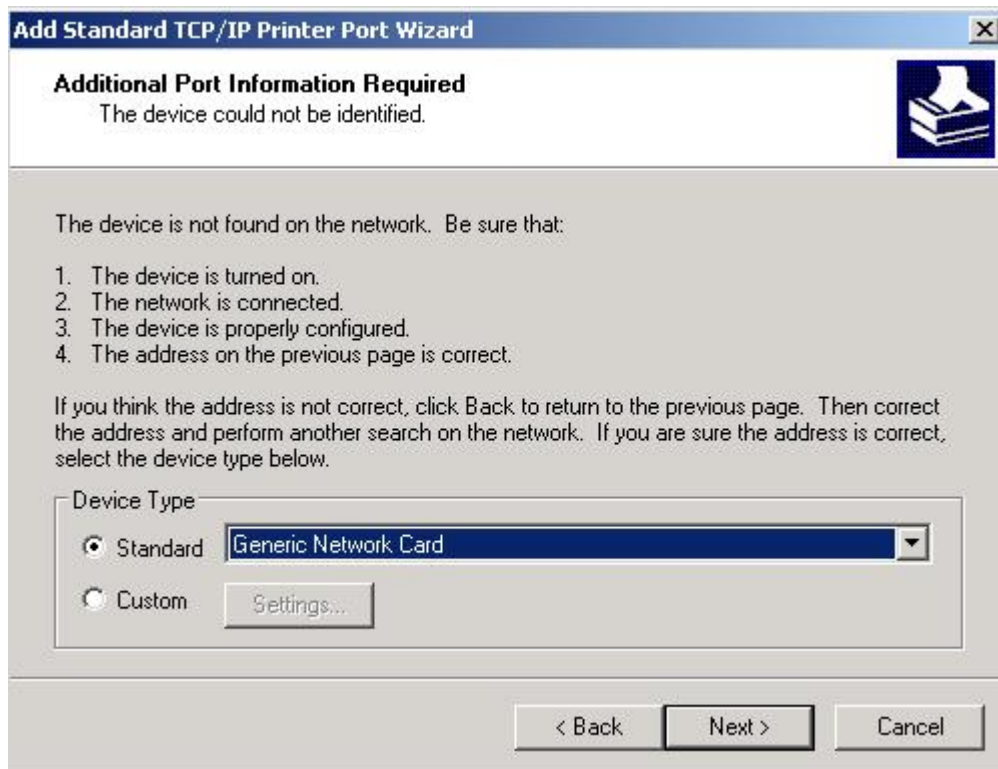


**2. The wizard appears, click Next**

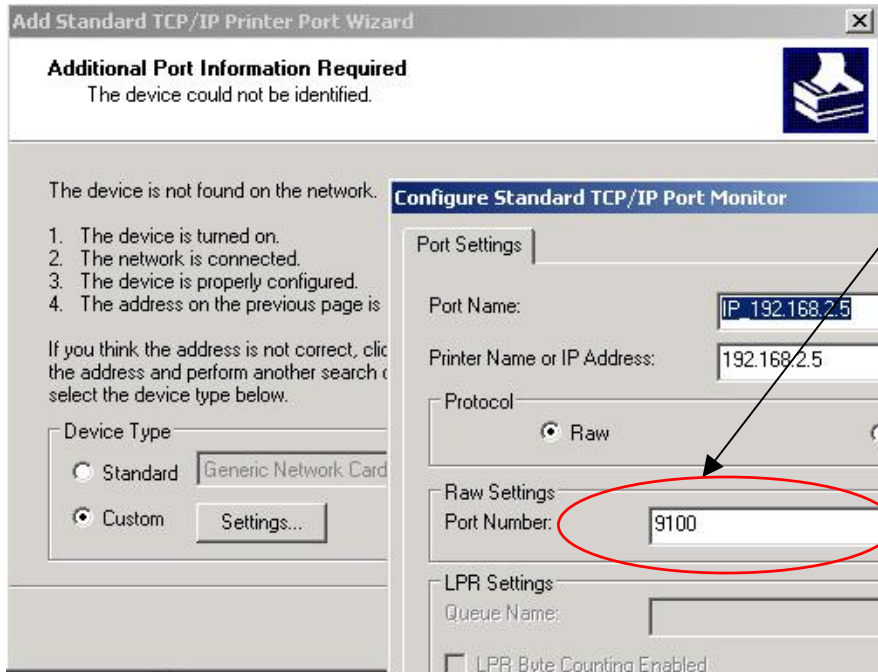
**3. Enter the IP address of the Print server / Router in the space, 'Printer name'. Port name will set itself.**



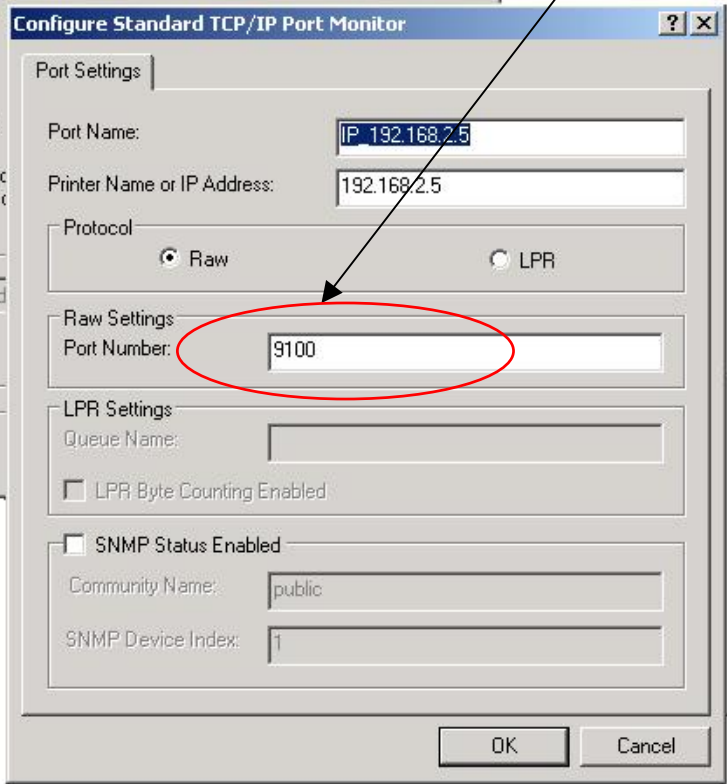
**4. Select the default 'Generic Network card' and click next.**



**5. If the printer you are installing is the 2nd printer, the port number that the printer is printing to needs to be altered. Select the option 'Custom' and click on 'Settings'**



Printer 2 will print to port number **9101**



N.B. When installing the second printer the port only needs to be 'configured' not 'Added'. So in the printer properties the option 'configure' is selected and the port number is changed.

