

IMPORTANT!

This Guide refers to the following Products:



All Belkin Routers



All Belkin Modem Routers

Establishing A Connection From PC To Router

Please read the following carefully;

Synopsis:

This Self-Help Guide is designed to assist you if you are having difficulty in forming a connection between your PC and your Belkin Router or Modem Router.

This guide will concentrate on the Local Area Network (or LAN) connection between PC and Router. Please refer to our separate guides if you are experiencing other issues such as Internet connectivity.

Requirements:

In order to complete the steps as outlined in this Self-Help Guide you will simply need the following;

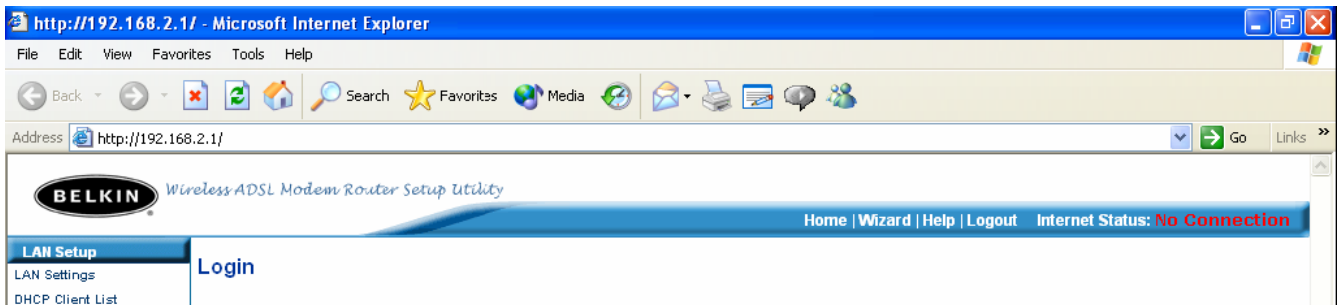
- A Belkin Router or Modem Router (powered)
- A Computer with a working RJ45 LAN Port
- An RJ45 (Patch) Networking Cable

The Guide is based upon Users of Windows Operating Systems so a machine running Windows 98SE, ME, 2000 or XP is required.

Establishing A Connection From PC To Router

In most cases there will be no problems connecting between your PC and your (Modem) Router providing they are connected to one another. We would always recommend initially attempting to open the User Interface of the Router from a PC connected via Ethernet Cable to test connectivity, before assuming a problem and undertaking troubleshooting.

To access the Web User Interface of any Belkin (Modem) Router simply open your Internet Browser (i.e. Internet Explorer) and type the IP Address of the (Modem) Router into the Address Bar. This is usually 192.168.2.1.



All being well the Web User Interface of the Belkin (Modem) Router should appear. If it doesn't then the following steps should be undertaken.

Check The Physical Connections

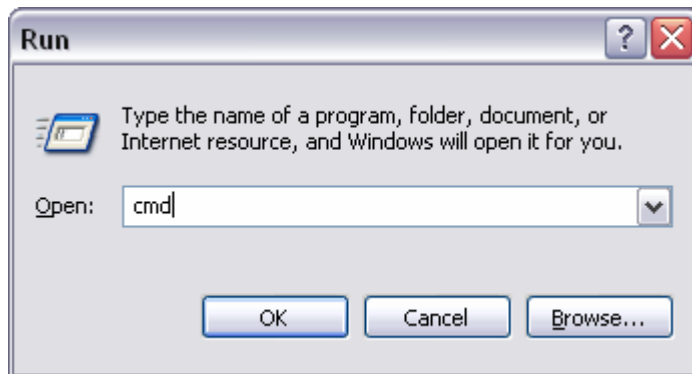
As a primary check you ensure that the PC and (Modem) Router are indeed capable of 'talking' to one another from a physical connectivity point of view. Please therefore ensure the following;

- The (Modem) Router and PC are both powered on.
- An Ethernet (Patch) Cable is plugged between PC and one of the Router's LAN Ports
- There are lights illuminated by the PC's Ethernet (LAN) port.
- There is a light on the Front Fascia of the Router indicating the LAN connection

If you are having problems connecting to the (Modem) Router via a Wireless (WLAN) connection, then we would suggest establishing a wired connection as described above in the first instance.

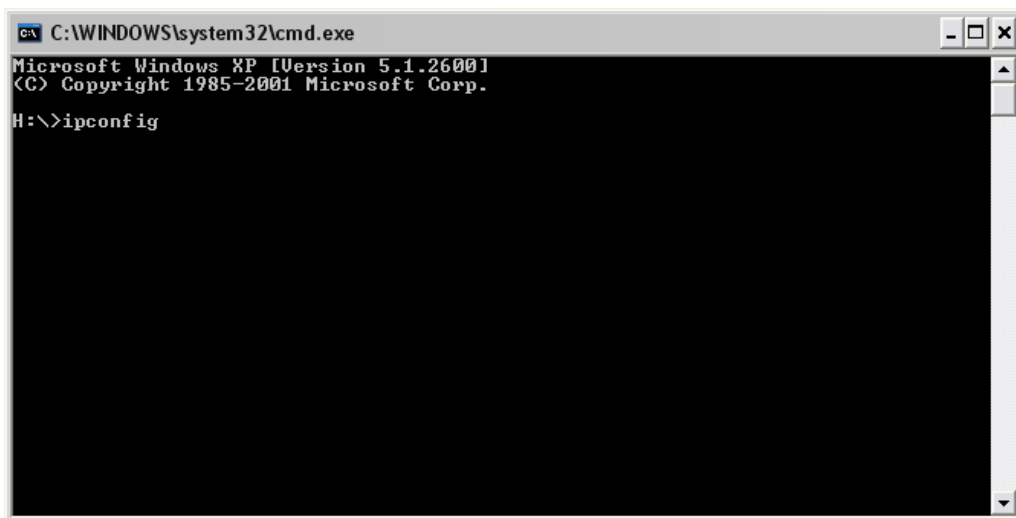
Checking the Network Connectivity

Providing the physical connections are fine, then the actual connectivity between the two devices should be tested next. To do this click on the 'Start' button, locate the 'Run' option and once the 'Run' command Window opens type 'cmd' into the entry field (as shown below) and then press 'OK' or hit 'ENTER'.



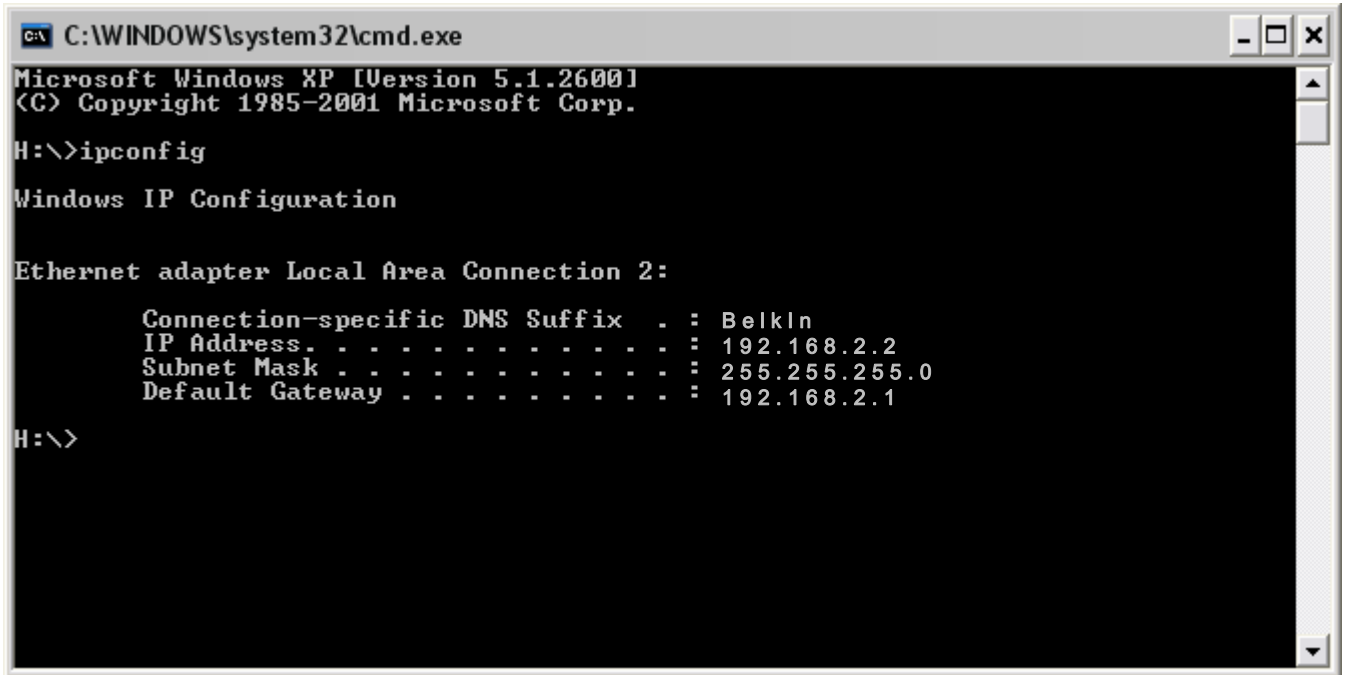
NOTE: 'cmd' is simply an abbreviation of 'command' which older operating systems will use instead of the abbreviated form.

A Black DOS-Window should appear with a flashing cursor. Simply type in 'ipconfig' and press 'ENTER'*.



*'ipconfig' is an abbreviation of Internet Protocol Configuration – For older Operating Systems use 'winipcfg'

Providing you have a working connection to your (Modem) Router information similar to that shown below will be displayed;



```
C:\WINDOWS\system32\cmd.exe
Microsoft Windows XP [Version 5.1.2600]
(C) Copyright 1985-2001 Microsoft Corp.

H:\>ipconfig

Windows IP Configuration

Ethernet adapter Local Area Connection 2:

    Connection-specific DNS Suffix  . : Belkin
    IP Address . . . . . : 192.168.2.2
    Subnet Mask . . . . . : 255.255.255.0
    Default Gateway . . . . . : 192.168.2.1

H:\>
```

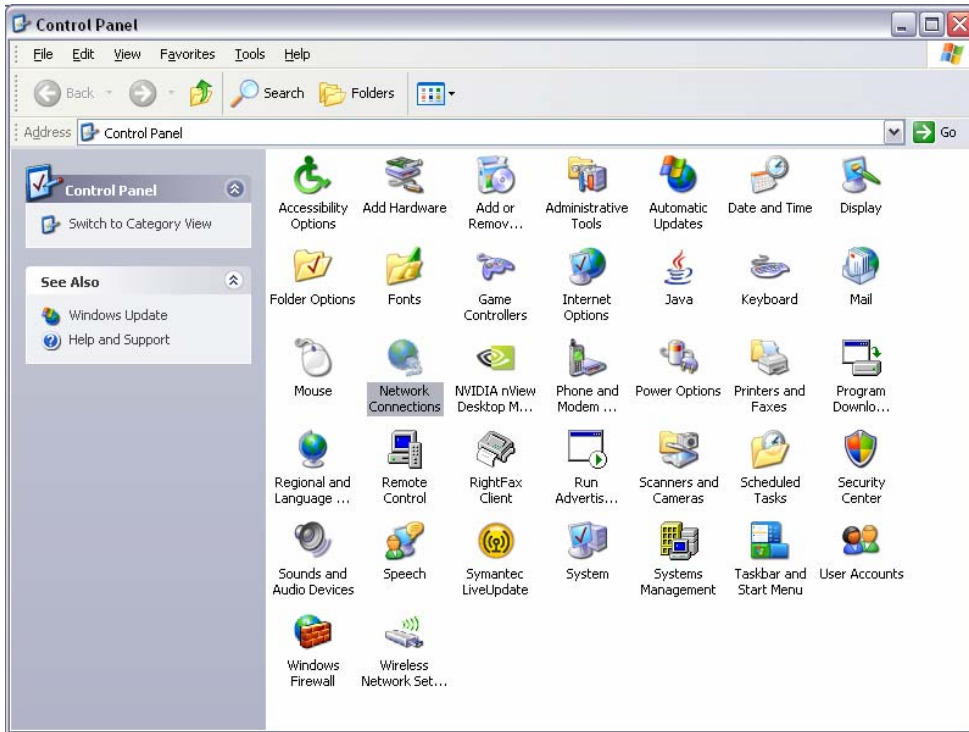
By default all Computer Network Interface Cards (NICs) are set to 'Obtain an IP Address Automatically' if the Network Card has done this then it will obtain one from the Router which is acting as a DHCP Server. The Information shown in the Screenshot above shows that this is happening correctly;

1. The DNS Suffix shows 'Belkin' – This is the 'Hostname' of the Belkin (Modem) Router
2. The Default Gateway shows the Router's IP Address (192.168.2.1) as used above.
3. The PC has successfully obtained a 192.168.2.x IP-Address from the Router

If you receive that same type of information as shown above then please try connecting to the User Interface of the Router via your Internet Browser again, as a Network Connection does seem to be present.

If you receive Information that is missing a 'DNS Suffix' and/or 'Default Gateway' or shows any other message including 'Media Disconnected' then please double check the Physical connections and if required continue with the troubleshooting as follows.

To troubleshoot further click on the 'Start' menu and select 'Control Panel'. In the 'Control Panel' double click the icon for 'Network Connections' (which in older Operating Systems may show as 'Internet Connections' after which 'Network' should be selected).



Once the Network Connections are open you will see an Icon for your Local Area (LAN) Connection which is essentially the Network Card of your Computer. This will look similar to that shown below;

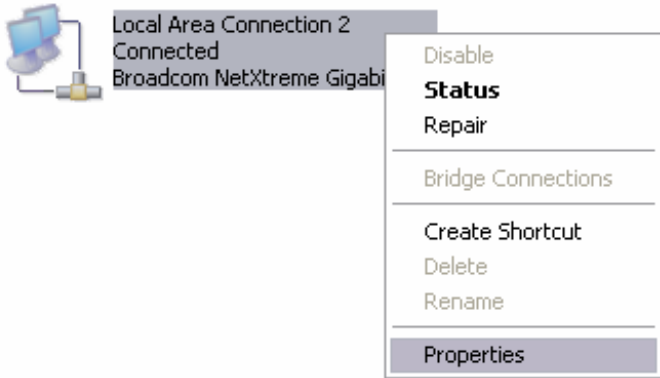
LAN or High-Speed Internet



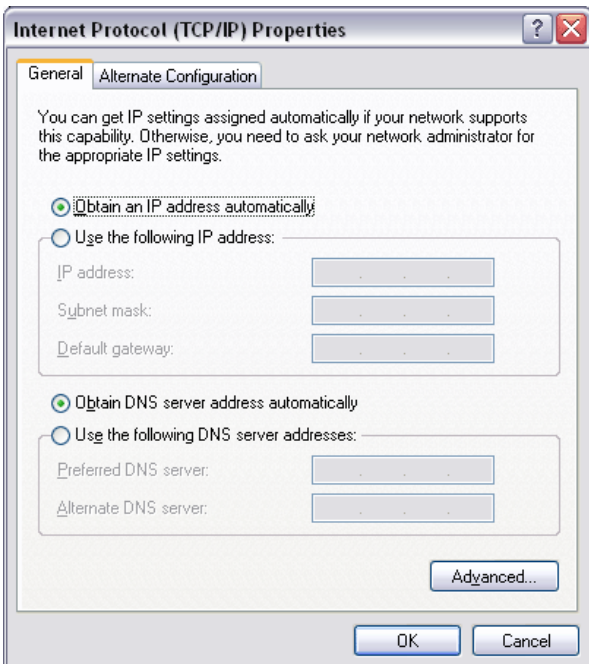
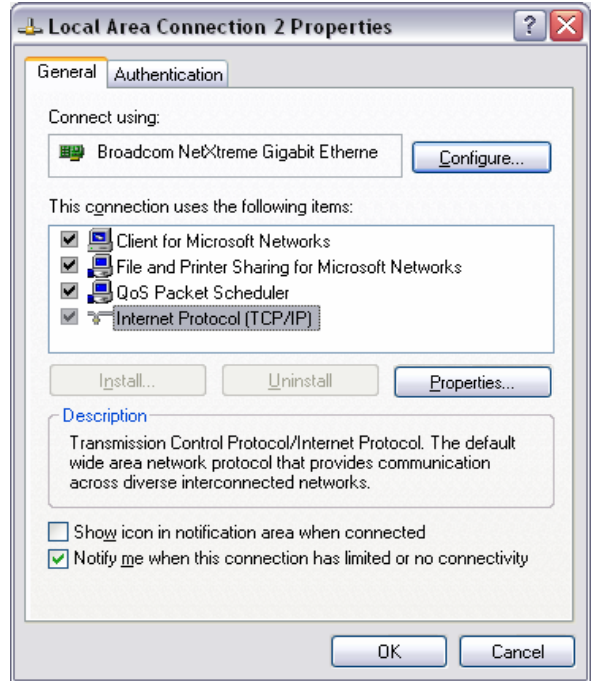
If for any reason there is a red cross shown on the Icon then the physical connection should be checked.

Next, right-click the Icon for your Local Area Connection so that the sub-menu appears and select 'Properties'. This will bring up the 'Properties' Window for your Computer's Network Card.

LAN or High-Speed Internet



From the large white window select the option For 'Internet Protocol (TCP/IP)' Providing you Have administrative rights over the Computer the 'Properties' button should be highlighted.



Click on the 'Properties' button to continue. A screen similar to that shown left should appear.

Connectivity problems are often because the Card has been set to 'Use The Following IP Address' i.e. a Static IP Address.

Set the Card to 'Obtain An IP Address Automatically' and 'Obtain DNS Server Address Automatically' as shown here and then click the 'OK' button to save the changes.

Once the changes are affected you should test the connectivity again using 'ipconfig' in the black DOS Window as described before.