



**Belkin Components**  
**G700 Portable PDA Keyboard**  
**User Guide**  
**For Pocket PC OS Handhelds**

P74050

# Index

<b>Introduction</b> .....	2
Features and Specifications .....	3
<b>Operating the G700 Keyboard</b>	
Opening the Keyboard.....	4
Closing the Keyboard.....	5
On-Keyboard Charging .....	6
<b>Installation and Operation</b>	
Installing the G700 Keyboard Driver .....	7
Enabling the Driver .....	9
Connecting and Removing the PDA.....	10
<b>Customizing Keyboard Settings</b> .....	11
<b>Application and Combination Keys</b> .....	13
<b>Assigning Hot Keys</b> .....	15
<b>Frequently Asked Questions</b> .....	16
<b>FCC/CE/Warranty Statement</b> .....	17

# Introduction

Congratulations! You have just purchased the definitive tool to extend your handheld's capabilities. The Belkin G700 Portable PDA Keyboard will give you an easy and convenient way to add data to your Pocket PC handheld.

Designed for the mobile professional, the G700 weighs in at only seven ounces and closes to a size compact enough to fit easily into a coat pocket.

For our complete selection of PDA accessories and mobile enhancements, please visit us at [belkin.com](http://belkin.com).

# Features and Specifications

- Easy connection compatibility with your Pocket PC OS device
- Standard QWERTY keyboard layout
- Shortcut keys for faster operation
- Ultra-portable design
- Pass-through charging capability

**Opened:** 9.85" x 6.97" x 2.88"  
(250mm x 177mm x 73mm)

**Closed:** 5.83" x 3.78" x .65"  
(148mm x 96mm x 16.6mm)

**Weight:** 7 ounces (198.4g)

**Temperature Endurance:** 70° C (158° F)

**Power Consumption:**

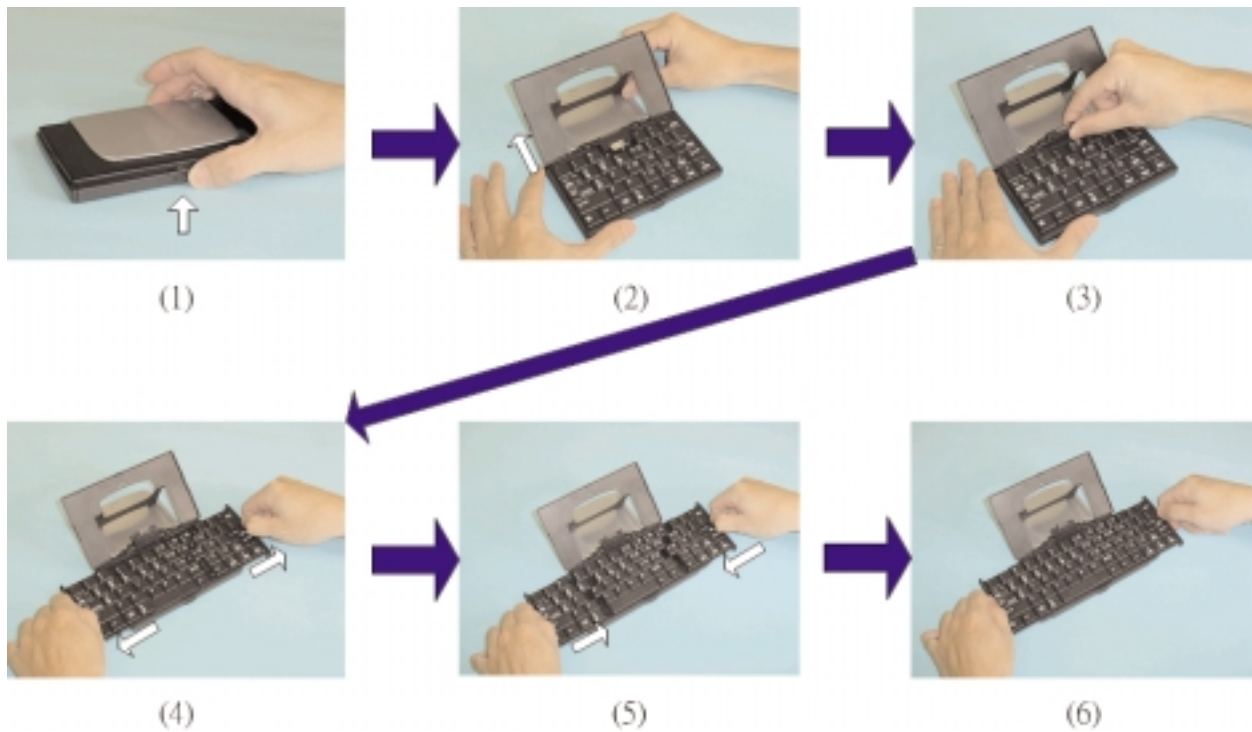
In Operation: 1mA

In Sleep Mode: 1 $\mu$ A

# Operating the Keyboard

## Opening the Keyboard

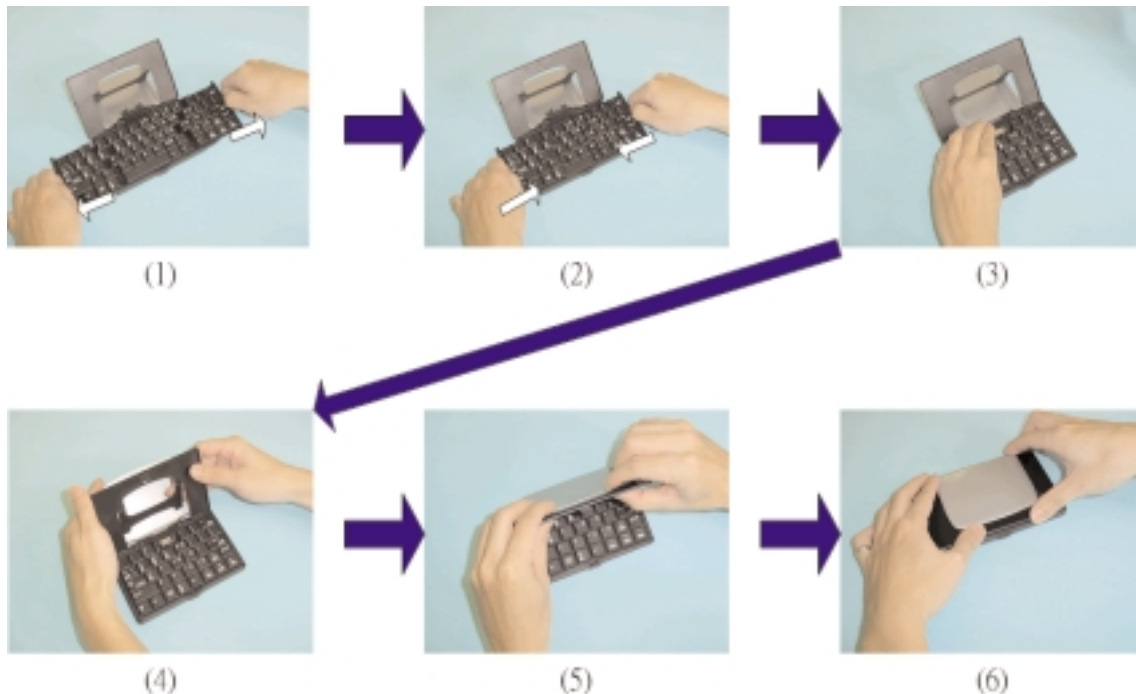
1. Open the keyboard by pressing the button.
2. Raise the lid and stand so that they are fully extended.
3. Flip up the keyboard connector stand to its full upright position.
4. Pull out the left and right section of the keyboard until the middle section pops up.
- 5-6. Push the left, then the right section of the keyboard together.



# Operating the Keyboard (continued)

## Closing the Keyboard

1. Gently pull the left and then the right section of the keyboard apart.
2. Push the left and right section of the keyboard forward the center of the keyboard. The middle section will automatically move down and make room for the left and right sections. DO NOT push down on the middle section.
3. Flip down the keyboard connector head until it lays flat within the keyboard.
4. Pull the lid and stand together.
5. Press the lid together with the upper frame.
6. Gently press down on the cover until it snaps in the closed position.



## Operating the Keyboard (continued)

### On-Keyboard Charging

The G700 keyboard is designed with an electronic circuit that accepts AC power. The power receptacle is located on the side of the keyboard.

A plug adapter is included with your G700 keyboard. This adapter attaches to your PDA's AC power adapter, allowing you to charge your PDA directly while using the keyboard.



***Note: Your PDA must be equipped with rechargeable batteries as standard equipment. This feature is not compatible with aftermarket recharging products.***

# Installation and Operation

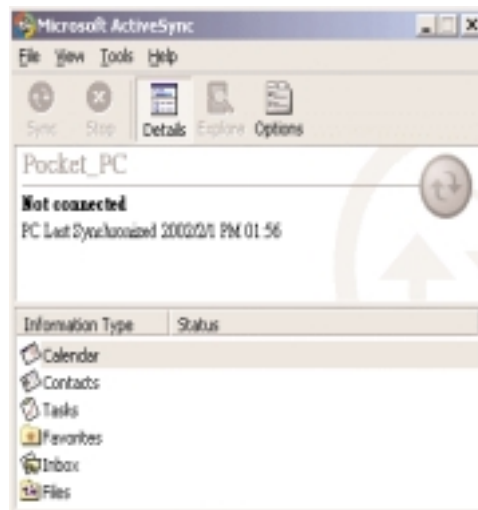
## Installing the G700 Keyboard Driver

### Before Installation

1. Disable any other keyboard applications that you have installed on your Pocket PC handheld.  
(Refer to the user guide included with your Pocket PC handheld for instructions on this.)
2. You must have 50Kb of available memory to install the driver.

### Install the Driver

1. Connect the Pocket PC handheld to a computer using the docking cradle or cable.
2. Establish a connection between the computer and the Pocket PC handheld using Microsoft ActiveSync® software, then back up the data on your Pocket PC handheld. (Refer to the user guide included with your Pocket PC handheld for instructions on this.)



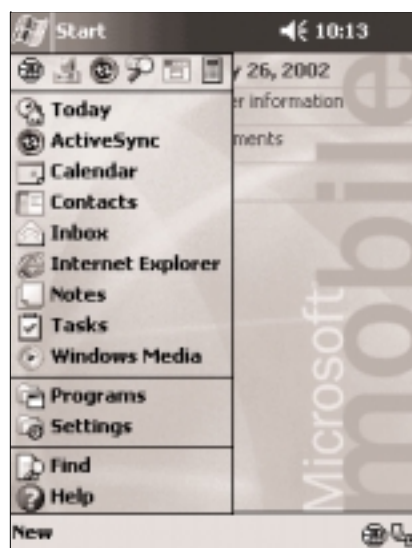


# Installation and Operation (continued)

3. Insert the CD into an optical drive on the computer.
4. Software installation begins automatically. Follow the on-screen instructions to install the software.  
If installation does not begin automatically, select "Start > Run" from the "Start" menu on your desktop or notebook computer. In the dialog box, enter "X:\Setup" where X is the letter of your optical drive. Select "OK". Follow the on-screen instructions to complete the installation.
5. After the software is installed, disconnect the Pocket PC handheld from the docking cradle or cable.
6. Reset the Pocket PC handheld for two seconds. This allows the device to recognize the keyboard software. For more information on performing a reset, refer to the user guide included with your Pocket PC handheld.

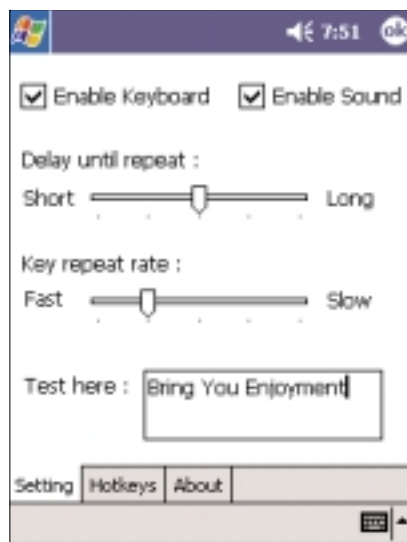
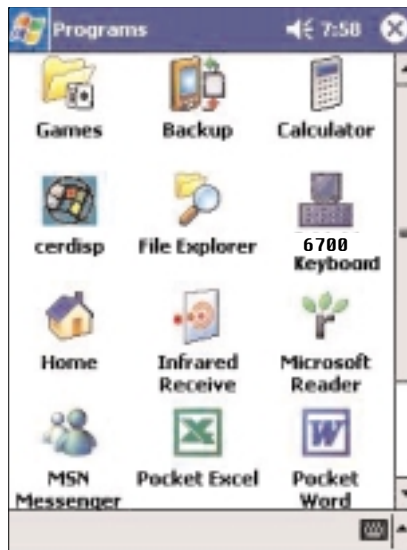
## Enabling the Driver

1. Turn on the Pocket PC Handheld.
2. Select "Start > Programs".



# Installation and Operation (continued)

3. Select the “Belkin G700 Keyboard” icon.



4. Add a check mark in the check box in front of “Enable Keyboard”.

# Installation and Operation (continued)

## **Connecting and Removing the PDA**

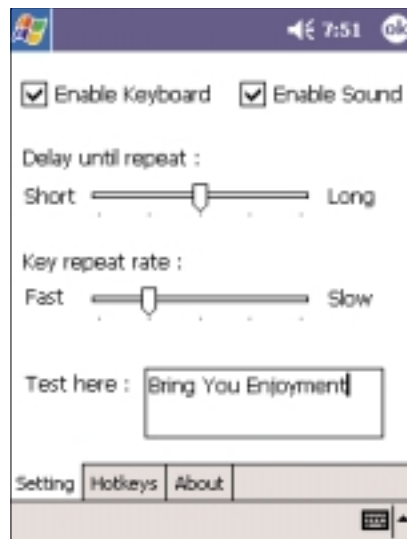
1. Align the PDA's connector with the keyboard's connector. Gently slide the PDA onto the connector until it is firmly seated on the connector.
2. To remove, hold the keyboard in place and gently pull the PDA up from the connector until it is completely removed from the keyboard.

# Customizing Keyboard Settings

## Configuring the Keyboard

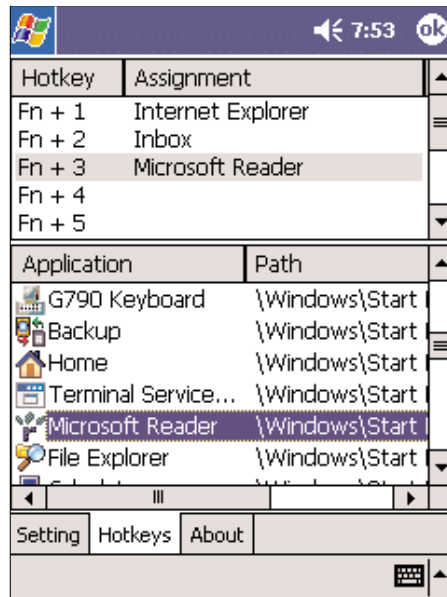
You can configure several features on your Belkin G700 PDA Keyboard. To customize your keyboard:

1. On your Pocket PC handheld, navigate to the “Belkin G700 Keyboard” application and open it.
2. Select the “Setting” tab.
3. Adjust any of the following settings.



4. Tap the “Enable Click Sound” check box to hear a click every time you press a key.
5. Slide the “Delay until repeat” indicator to lengthen or shorten the time the keyboard waits before repeating a pressed key. The right side of the scale specifies a longer delay time.




## Customizing Keyboard Settings (continued)



6. Slide the “Keyboard repeat rate” indicator to speed up or slow down the rate at which the keyboard repeatedly displays a pressed key. The right side of the scale specifies a faster repeat rate.
7. Tap in the “Test string here” field to enter characters from the keyboard.

# Application and Combination Keys

Certain keys on the G700 Keyboard can directly launch applications and perform additional functions in the combinations listed below.

<b>Keystroke Combination</b>	<b>Function</b>
Shift (⇧) + letter key	Capital letter
Shift (⇧) + number key	Upper left character on key
	Pocket PC Start Menu
	Today
Fn + Q	Inbox
Fn + W	Pocket Word
Fn + E	Pocket Excel
Fn + R	Calendar
Fn + T	Tasks
Fn + Y	Notes
Fn + A	Contacts
Fn + 	Internet Explorer
Fn + CapsLock	NumLock mode
Fn + Tab	Escape
Fn + Backspace	Off
Fn + number key	Hot key function
Fn + Enter	OK
Fn + up arrow	Page up

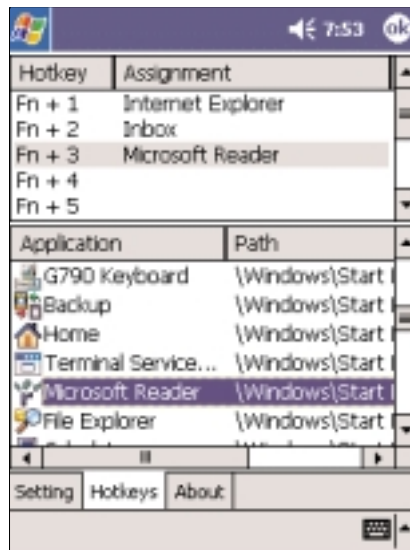
## Combination Keys (continued)

Fn + down arrow	Page down
Fn + left arrow	Home
Fn + right arrow	End
Ctrl + C	Copy
Ctrl + V	Paste
Ctrl + X	Cut
Ctrl + A	Select all
Ctrl + Z	Undo
Shift (⇧) + right arrow	Selects area to the right of the cursor
Shift (⇧) + left arrow	Selects area to the left of the cursor
Shift (⇧) + up arrow	Selects area above the cursor
Shift (⇧) + down arrow	Selects area below the cursor

# Assigning Hot Keys

You can assign specific hot key combinations (Fn + 0 through Fn + 9) to directly launch a variety of applications with just a few keystrokes.

1. On your Pocket PC, tap the “Belkin G700 Keyboard” application and launch it.
2. Select the Hot key tab.



3. Select the hot key combination (Fn + 1, Fn + 2, and so forth...) you want to assign in the top window.
4. Select the application you want to assign to the hotkey combination in the bottom window.
5. Click on the “OK” button at the top of the screen to enable the assignment and close the window. This completes the hot key assignments.



# Frequently Asked Questions

## **A) How do I uninstall the driver?**

Select “Start > Settings > System tab > Remove Programs”. Select “Belkin G700 Keyboard” from the list of applications and then, select “Remove”. Reset your Pocket PC for several seconds so your new settings can take effect.

## **B) I pressed a key on the keyboard, but the letter did not register.**

Be sure the keyboard is securely connected to the Pocket PC. If the connection is secure, remove the keyboard driver from the Pocket PC, and then reinstall it.

## **C) How can I make backlight (front light) stay on while typing?**

Select, “Start>Settings>System tab>Backlight” (or “Front light” in some handhelds).

Select the “Battery Power” tab. Remove a check in the “Turn off backlight if device is not used for...” checkbox.

Select “OK”.

## **D) My Pocket PC will not sync through my serial cradle since installing the G700 driver.**

It is necessary to disable the G700 Keyboard driver prior to syncing through a serial connection. Please refer to “Enabling the Driver”, page 8 of this manual. Once you have completed syncing data, you must re-enable the driver to operate the keyboard.

# FCC/CE/Warranty Statement

## DECLARATION OF CONFORMITY WITH FCC RULES FOR ELECTROMAGNETIC COMPATIBILITY

We, Belkin Components, of 501 West Walnut Street, Compton, CA 90220, declare under our sole responsibility that the products:

F8P3502, F8H1501, F8Y1501

to which this declaration relates:

Comply with Part 15 of the FCC Rules. Operation is subject to the following two conditions: (1) this device may not cause harmful interference, and (2) this device must accept any interference received, including interference that may cause undesired operation.

## CE Declaration of Conformity

We, Belkin Components, declare under our sole responsibility that the F8P3502, F8H1501, and F8Y1501, to which this declaration relates, are in conformity with Generic Emissions Standard EN55022:1998 and with Generic Immunity Standard EN55024:1998.

## ICES Statement

This Class B digital apparatus complies with Canadian ICES-003. Cet appareil numérique de la classe B est conforme à la norme NMB-003 du Canada.

## Belkin Components Limited One-Year Product Warranty

Belkin Components warrants this product against defects in materials and workmanship for one year. If a defect is discovered, Belkin will, at its option, repair or replace the product at no charge provided it is returned during the warranty period, with transportation charges prepaid, to the authorized Belkin dealer from whom you purchased the product. Proof of purchase may be required.

This warranty does not apply if the product has been damaged by accident, abuse, misuse, or misapplication; if the product has been modified without the written permission of Belkin; or if any Belkin serial number has been removed or defaced.

THE WARRANTY AND REMEDIES SET FORTH ABOVE ARE EXCLUSIVE IN LIEU OF ALL OTHERS, WHETHER ORAL OR WRITTEN, EXPRESSED OR IMPLIED. BELKIN SPECIFICALLY DISCLAIMS ANY AND ALL IMPLIED WARRANTIES, INCLUDING, WITHOUT LIMITATION, WARRANTIES OF MERCHANTABILITY AND FITNESS FOR A PARTICULAR PURPOSE.

No Belkin dealer, agent, or employee is authorized to make any modification, extension, or addition to this warranty.

BELKIN IS NOT RESPONSIBLE FOR SPECIAL, INCIDENTAL, OR CONSEQUENTIAL DAMAGES RESULTING FROM ANY BREACH OF WARRANTY, OR UNDER ANY OTHER LEGAL THEORY, INCLUDING BUT NOT LIMITED TO LOST PROFITS, DOWNTIME, GOODWILL, DAMAGE TO OR REPROGRAMMING, OR REPRODUCING ANY PROGRAM OR DATA STORED IN OR USED WITH BELKIN PRODUCTS.

Some states do not allow the exclusion or limitation of incidental or consequential damages or exclusions of implied warranties, so the above limitations of exclusions may not apply to you.

This warranty gives you specific legal rights, and you may also have other rights that vary from state to state.



belkin.com

***Belkin Components***

501 West Walnut Street  
Compton • CA • 90220 • USA  
Tel: 310.898.1100  
Fax: 310.898.1111

***Belkin Components, Ltd.***

Express Business Park  
Shipton Way • Rushden • NN10 6GL  
United Kingdom  
Tel: +44 (0) 1933 35 2000  
Fax: +44 (0) 1933 31 2000

***Belkin Components B.V.***

Starparc Building • Boeing Avenue 333  
1119 PH Schiphol-Rijk • The Netherlands  
Tel: +31 (0) 20 654 7300  
Fax: +31 (0) 20 654 7349

***Belkin Components, Ltd.***

7 Bowen Crescent • West Gosford  
NSW 2250 • Australia  
Tel: +61 (2) 4372 8600  
Fax: +61 (2) 4325 4277

© 2002 Belkin Components. All rights reserved. All trade names are registered trademarks of respective manufacturers listed.