

**PRINTERS NOTES**

**COLOR/PLATES**

- BLACK
- PMS 877U
- PMS 369U
- PMS 3425U
- OPAQUE WHITE UNDERCOAT (Double-hit Drypass) **ONLY ON CALLED OUT AREAS. EVERYTHING ELSE PRINTS DIRECTLY ON STOCK.**

**MATERIAL**

300g KRAFT — To Be Determined

**FONTS**

Helvetica Neue Lt. Pro

**DO NOT PRINT**

Dieline; Printers Notes

**DIE SPECIFICATIONS**

Dieline specs are on a hidden layer in the Illustrator file, to view these specs turn on the layer.

- OVERALL MATTE AQUEOUS COAT
- ALL COPY PRINTS BLACK UNLESS INDICATED

LOGO: 100% BLACK

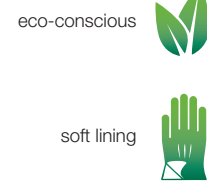
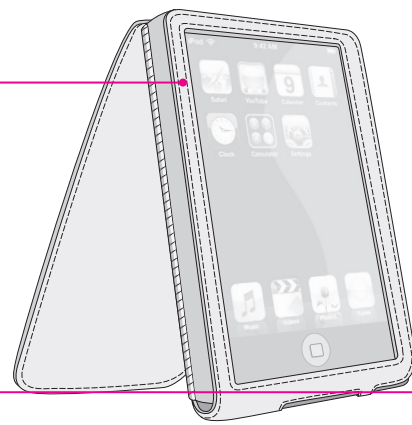
**BELKIN.**

Belkin Branded Bar:  
PMS 877U  
OPAQUE WHITE UNDERCOAT  
(Double-hit Drypass)

**BELKIN**

**Leather Folio**

ART:  
100% BLACK; PMS 877U  
OPAQUE WHITE  
UNDERCOAT  
(Double-hit Drypass)

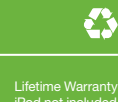


ICONS:  
PMS 369U; PMS 3425U  
**OPAQUE WHITE UNDERCOAT (Double-hit dry pass) ONLY ON AREAS with PMS 369U/3425U** inside knocks out to print onto kraft paper

Belkin's Eco-Conscious iPod cases are made using environmentally preferred materials and manufacturing techniques that minimize waste, dependence on synthetic materials, and harmful solvents. Belkin is committed to reducing the environmental impact of our products. Visit [www.belkin.com/ECO](http://www.belkin.com/ECO) to learn more.

PMS 369U and OPAQUE WHITE UNDERCOAT (Double-hit Drypass)

[belkin.com](http://belkin.com)



COPY, RULE, RECYCLE:  
K/O WHITE UNDERCOAT

**Leather Folio**

**ECOCONSCIOUSSTYLE**

RULE: 100% BLACK

Belkin International, Inc.  
310-888-1100  
Los Angeles, CA 90220, USA  
Made in China

Belkin Ltd.  
+61 (0)2-4350-4000  
Tuggerah, Australia  
PM01815

© 2008 Belkin International, Inc. All rights reserved. All trade names are registered trademarks of respective manufacturers listed. iPod is a trademark of Apple Inc., registered in the U.S. and other countries.



PMS 369U and OPAQUE WHITE UNDERCOAT (Double-hit Drypass)

**BOX**

- OVERALL MATTE AQUEOUS COAT
- ALL COPY PRINTS BLACK UNLESS INDICATED

**PRINTERS NOTES**

**COLOR/PLATES**

- PMS 877U
- OVERALL MATTE AQUEOUS COAT

**MATERIAL**

KRAFT PAPERSTOCK/Weight — To Be Determined

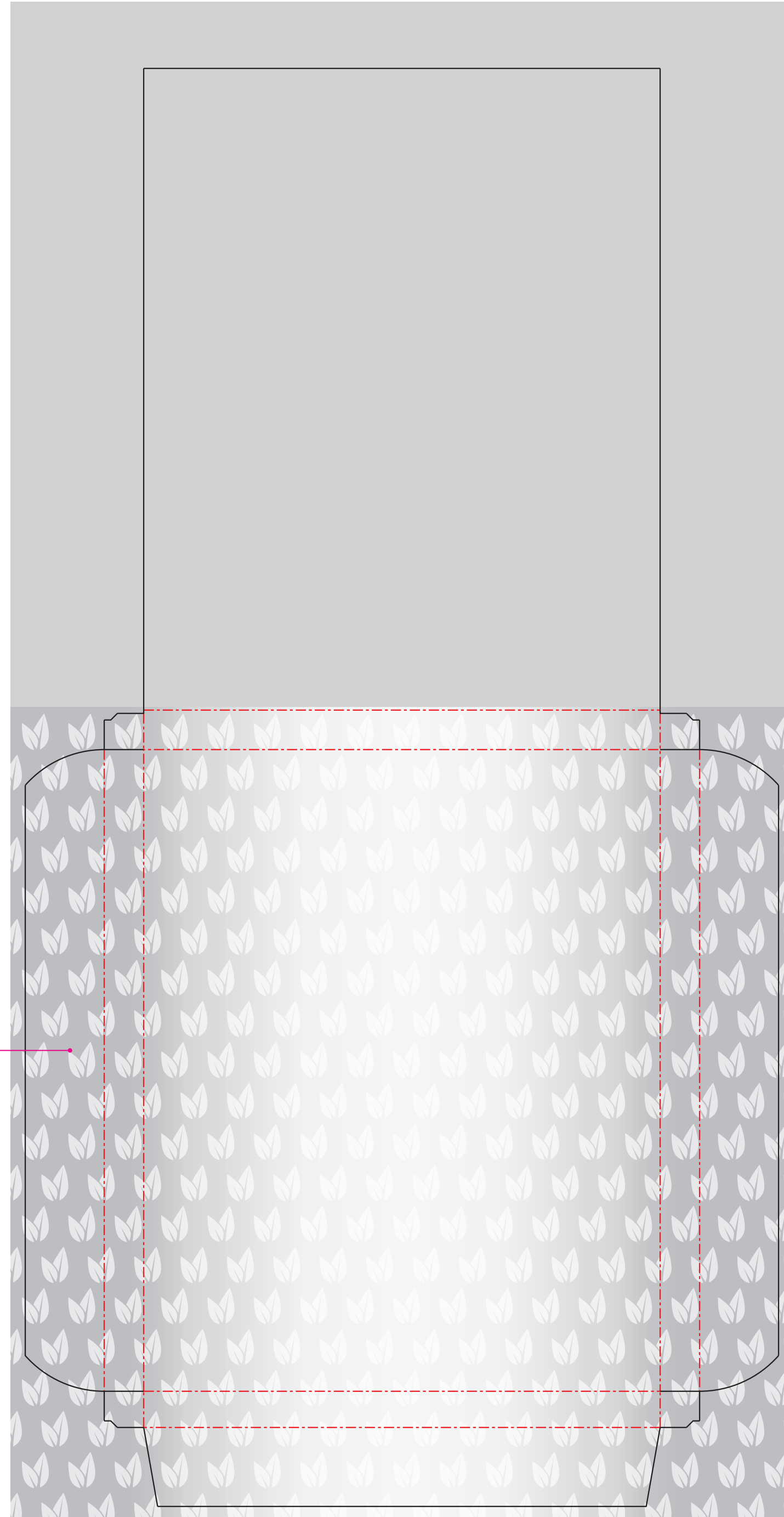
**FONTS**

**DO NOT PRINT**

Dieline; Printers Notes

**DIE SPECIFICATIONS**

Dieline specs are on a hidden layer in the Illustrator file,  
to view these specs turn on the layer.



PMS 877U

BOX INSERT

---

**PRINTERS NOTES**

---

**COLOR/PLATES**

- BLACK
  - OPAQUE WHITE UNDERCOAT (Double-hit Drypass)
  - PMS 369U
- 

**MATERIAL**

.3mm PET

---

**FONTS**

Helvetica Neue Lt. Pro

---

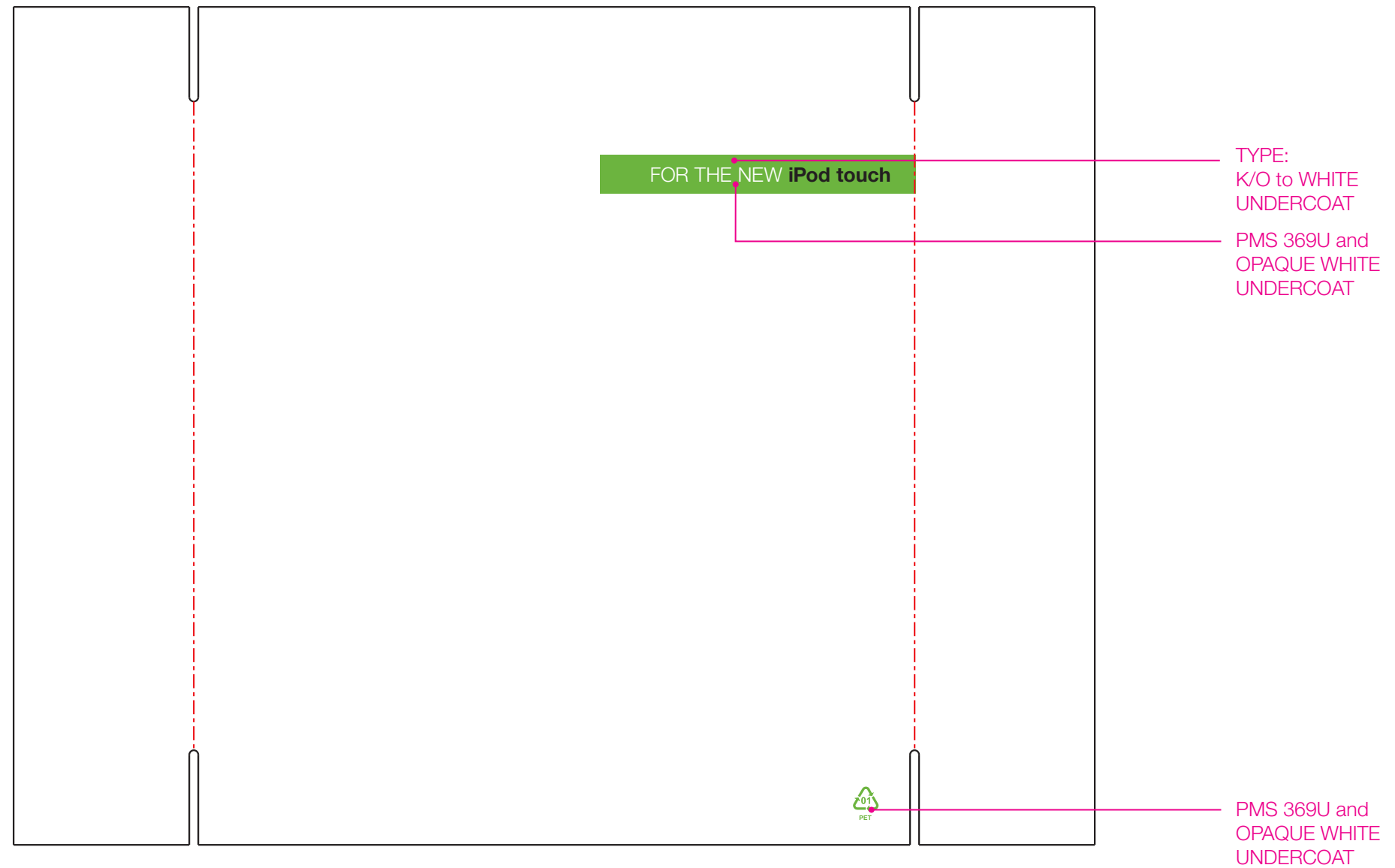
**DO NOT PRINT**

Dieline; Printers Notes

---

**DIE SPECIFICATIONS**

Dieline specs are on a hidden layer  
in the Illustrator file, to view these specs  
turn on the layer.



PET WINDOW