

BELKIN®

OmniView® KVM-over-IP Solutions



OmniView KVM-over-IP Device



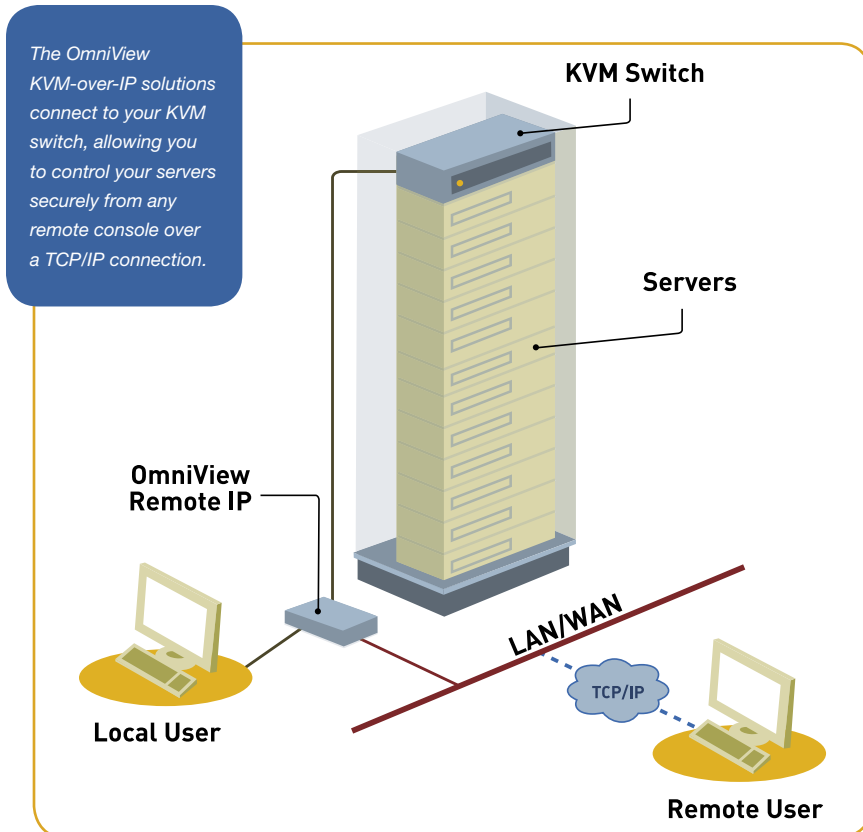
**OmniView KVM-over-IP Manager
with Virtual Media**

Add remote access to your KVM switches and servers

The OmniView KVM-over-IP Device (F1DP101M) and the KVM-over-IP Manager with Virtual Media (F1DE101H) provide businesses with an easy way to add KVM-over-IP technology to existing KVM and server configurations. When connected to a KVM switch, they allow network administrators to remotely and securely access and control their servers—from anywhere, at anytime. This round-the-clock remote access lets you troubleshoot servers faster and more efficiently, dramatically reducing server downtime and service costs. With their compact design, the Remote IP Device and Manager position on desktops or mount to server racks, and take up 0U space.

Features	Benefits	F1DP101M	F1DE101H
Digital Performance	Refers to color depth, synchronization capability, and responsiveness	Best	Good
Video Viewer	Type of viewer interface	ActiveX®	Java™
Digital User	Provides access for 1 remote user	✓	✓
Web-Based User Interface	Lets you access servers over a TCP/IP connection using a standard web browser	✓	✓
BIOS-Level Access	Provides remote access to server's BIOS to make changes and reboot servers	✓	✓
User-Friendly Interface	Provides quick setup and easy access to servers	✓	✓
Serial-Device Support	Lets you control power distribution units to perform hard reboots remotely	✓	✓
Digital Collaboration	Enables up to 25 users to simultaneously view digital video for collaborative troubleshooting	✓	✓
No Software Required	Simplifies deployment and installation, and eliminates costly licensing fees	✓	✓
Event Log and Notification	Allows you to monitor and receive email notification of user activity		✓
Virtual Media*	Allows you to transfer files and images between local and remote computers		✓

*Optional virtual-media feature requires software installation (included with product).

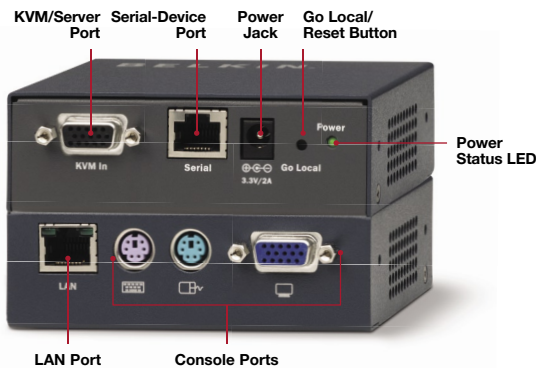


Other Features

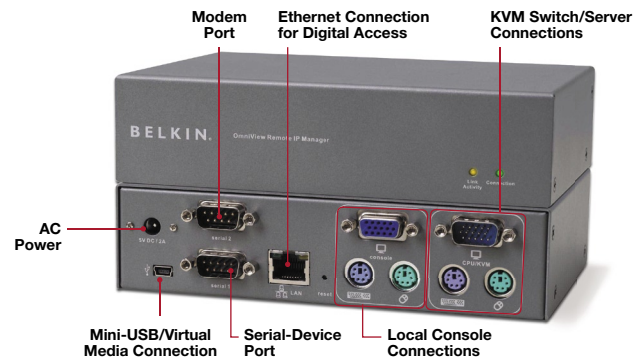
- **Multi-Platform Support** – works with any KVM switch or computer with PS/2 or USB** console connection
- **Desktop or 0U Installation** – positions easily on your desk or mounts to the back of your rack
- **Flash-Upgradeable Firmware** – ensures compatibility with the latest firmware

**USB connection requires a PS/2-to-USB adapter. Please use Belkin part number F5U119vE1.

OmniView KVM-over-IP Device Belkin # F1DP101M



OmniView KVM-over-IP Manager with Virtual Media Belkin # F1DE101H



F1DP101M Package Contents

OmniView KVM-over-IP Device
Rack-Mount Brackets with Screws
3.3V/2A Power Adapter
PS/2 KVM Cable Kit

RS232 Cross Cable
User Manual
Quick Installation Guide

F1DE101H Package Contents

OmniView KVM-over-IP Manager
with Virtual Media
PS/2 Cable Kit
VGA Cable
DB9 Serial Cable
Mini-USB Cable

5V DC, 2A Power Adapter
Rack-Mount Brackets with Screws
Software Installation CD
User Manual
Quick Installation Guide

Specifications

Model No.	F1DP101M
No. of Users Supported	1 digital or 1 local
Enclosure	Aluminum
Dimensions	1.1 x 4.1 x 3.1 in. (28 x 104 x 79mm)
Weight	0.5 lbs. (0.2kg.)
Hardware Supported	
Monitors	VGA
Keyboard/Mouse	PS/2
Video Resolution	Local analog port: Up to 1600x1200 @ 75Hz Digital port: Up to 1600x1200 @ 75Hz
Operating Systems	Windows® XP, Server 2003, or Vista™; Microsoft® DOS 5.x and above; Red Hat® Linux® 8.x and above; Sun™; Novell® 5.x; Solaris™ 8.x and above

Network/Security

Ethernet Port	RJ45 (10/100Base-T connection)
Typical Bandwidth	0.31Mbps***
Browsers Supported	Microsoft® Internet Explorer 6.0 and above, Netscape® Navigator® 7.0
Encryption Modes	128-bit SSL encryption

Ports

Local Console	HDD15 female (VGA), miniDIN6 (PS/2)
CPU/KVM	HDD15 male (VGA)****
Serial Device	RJ45
Modem	DB9 male

Warranty

2 years

***Typical bandwidth is defined as typical "non-intensive" administrative use at 16-bit color, 1024x768 resolution.

****The IP Device may be connected to any KVM switch or individual server with PS/2 keyboard and mouse console ports.

Specifications

Model No.	F1DE101H
No. of Users Supported	1 digital or 1 local
Enclosure	Metal
Dimensions	6.75 (W) x 1.75 (H) x 4.5 (L) in. (171 x 44.5 x 114mm)
Weight	1.65 lbs. (.75kg.)
Hardware Supported	
Monitors	VGA
Keyboards/Mice	PS/2
Video Resolution	Local analog port: 2048x1536@85Hz Digital port: 1600x1200@75Hz
Operating Systems	Windows®, XP, Server 2003; DOS; Linux® 8.x and above; Sun™; Novell® 5.x; Mac OS® X and above; Solaris™ 8.x and above

Network/Security

Ethernet Port	RJ45 (10/100Base-T connection)
Typical Bandwidth	0.29Mbps***
Browsers Supported	Microsoft® Internet Explorer 6.0 and above, Netscape® Navigator® 7.0
Encryption Modes	256-bit SSL, 128-bit SSL, AES, DES, 3DES
Authentication Support	LDAP, RADIUS, AD
Protocol Support	SNMP v1, IPv4

Ports

Local Console	HDD15 female (VGA), miniDIN6 (PS/2)
CPU/KVM	HDD15 male (VGA), miniDIN6 (PS/2)
CPU USB/Virtual Media	Mini-USB
Serial Device	DB9 male
Modem	DB9 male
Flash Upgrade	RJ11

Warranty

2 years

***Typical bandwidth is defined as typical "non-intensive" administrative use at 16-bit color, 1024x768 resolution.

Note: Specifications are subject to change without notice.

Other Belkin KVM Solutions:



OmniView Quad-Bus KVM-over-IP Switch

Provides remote and local control of servers for two simultaneous users. Features micro-cabling technology and includes cables to support up to 16 PS/2 servers.

(F1DE216G) – 2x16 Switch



OmniView SMB KVM-over-IP Switch

Provides remote and local control of servers for one user. Features CAT5 cabling for reduced cable bulk and simplified deployment.

(F1DP116G) – 1x16 Switch

(F1DP108G) – 1x8 Switch



Titan 17" LCD Rack Console

Provides direct access to racked servers. Dual-rail system allows LCD to remain displayed even with the keyboard stored.

(F1DC101P) – Console

(F1DC108C) – Console with 1x8 KVM Switch

Part Number

Description

MSRP

F1DP101M

OmniView KVM-over-IP Device

\$629.99

F1DE101H

OmniView KVM-over-IP Manager with Virtual Media

\$749.99

BELKIN®

www.belkin.com

Belkin International, Inc.

310-898-1100

Los Angeles, CA 90220, USA

Belkin Ltd.

+44 (0) 1933 35 2000

Rushden, United Kingdom

Belkin Ltd.

+61 (0) 2 4350 4600

Tuggerah, Australia