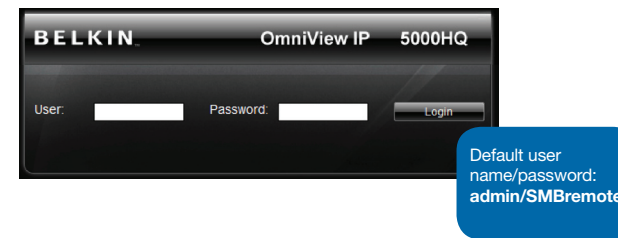


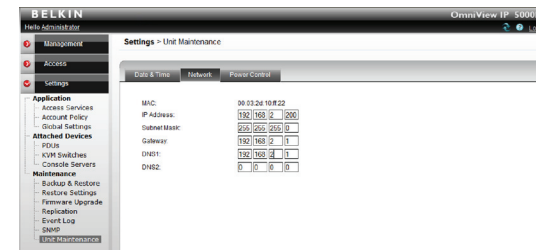
3 Network Configurations (Continued)

Network Setting with Web Interface

1. Type in the 5000HQ's IP address in the browser's address field, using this format: <http://192.168.2.200/>. The login page will appear. Bookmark the page for easy reference.



2. Click on "Settings > Unit Maintenance > Network" to open the Network Configuration page.



3. Assign a static IP and other network settings. Click on "Save & Reboot" to store any network-configuration settings.

Note: If the user leaves the web browser idle for more than 30 minutes, the login session will time-out and terminate the session.

Congratulations!

You have completed the installation of your OmniView IP 5000HQ.

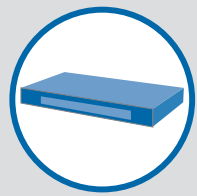
To further configure the functions of your product, please refer to your User Manual.



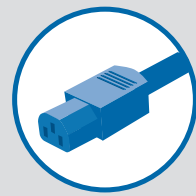
Quick Installation Guide

F1DP101C

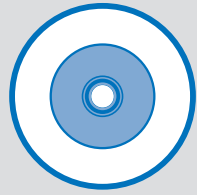
1 Package Contents



OmniView^{IP} 5000HQ



AC Power Cord



User Manual CD

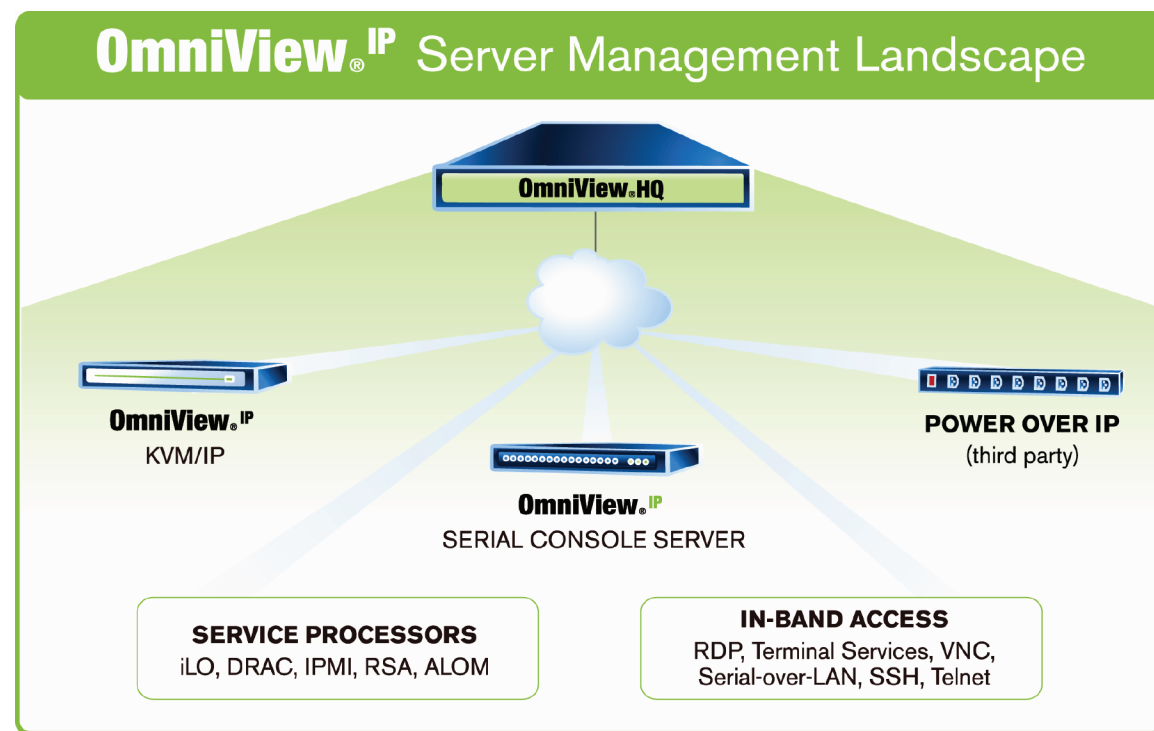


Quick Installation Guide



Rack-Mount Brackets and Screws

2 Typical Installation



Order OmniView IP KVM Switches and Serial Console Server

Contact your sales rep today and ask for these products.

Belkin Part Number	Description	Application
F1DP108G/F1DP116G	Single-User KVM-over-IP Switch	Control up to 16 servers from any remote location using a standard web browser
F1DP216G/F1DP232G	Dual-User KVM-over-IP Switch	Control up to 32 servers from any remote location using a standard web browser
F1DP101M	Single-User KVM-over-IP Device	Add secure, out-of-band remote access to any KVM switch or server
F1DP116S	Serial Console Server	Control up to 16 serial devices anywhere you have IP access

Please refer to www.belkin.com/kvm for the most current list of supported devices.

3 Network Configurations

Identify Your IP Address

To identify the IP address on your network, use the MAC 1 address located on the back of the 5000HQ. The OmniView IP 5000HQ will boot with the following static IP address: 192.168.2.200. It does not support DHCP.