

## Updating the Firmware

From time to time, Belkin may release new versions of the Router's firmware. Firmware updates contain feature improvements and fixes to problems that may have existed. When Belkin releases new firmware, you can download the firmware from the Belkin update website and update your Router's firmware to the latest version.

### Checking for a New Version of Firmware

The "Check Firmware" (1) button allows you to instantly check for a new version of firmware. When you click the button, a new browser window will appear informing you that either no new firmware is available or that there is a new version available. If a new version is available, you will have the option to download it.

#### Utilities > Firmware Update

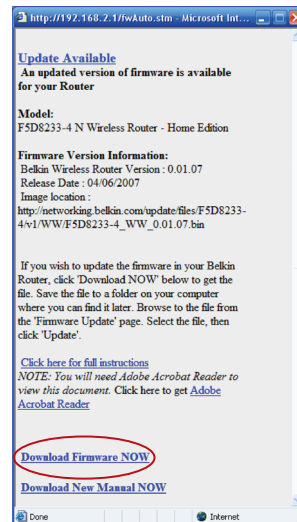
From time to time, Belkin may release new versions of the Router's firmware. Firmware updates contain improvements and fixes to problems that may have existed. Click the link below to see if there is a new firmware update available for this Router.

NOTE: Please backup your current settings before updating to a new version of firmware. [Click Here](#) to go to the Save/Backup current settings page.

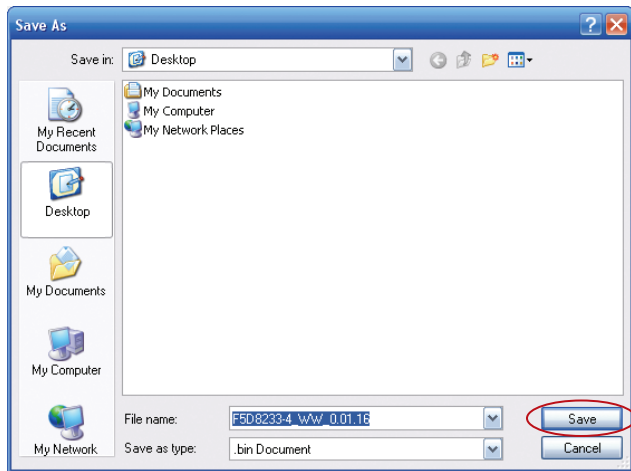


### Downloading a New Version of Firmware

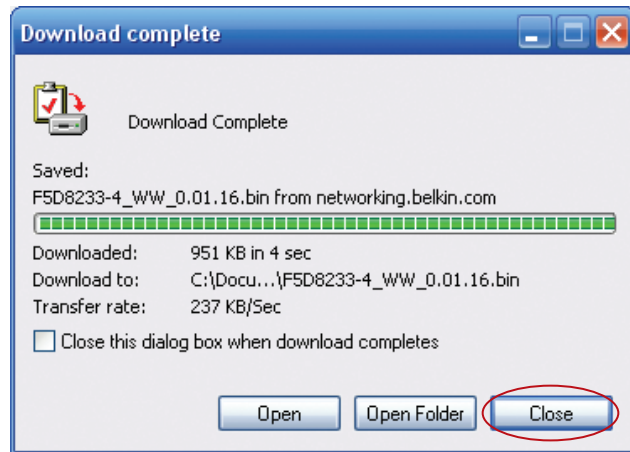
If you click the "Check Firmware" button and a new version of firmware is available, you will see a screen similar to the one here:



1. To download the new version of firmware, click "Download".
2. A window will open that allows you to select the location where you want to save the firmware file. Select a location. You can name the file anything you want, or use the default name. Be sure to locate the file in a place where you can locate it yourself later. When you have selected the location, click "Save".



3. When the save is complete, you will see the following window. Click "Close".



The download of the firmware is complete. To update the firmware, follow the next steps in "Updating the Router's Firmware".

## Updating the Router's Firmware

1. In the "Firmware Update" page, click "Browse". A window will open that allows you to select the location of the firmware update file.

### Utilities > Firmware Update

From time to time, Belkin may release new versions of the Router's firmware. Firmware updates contain improvements and fixes to problems that may have existed. Click the link below to see if there is a new firmware update available for this Router.

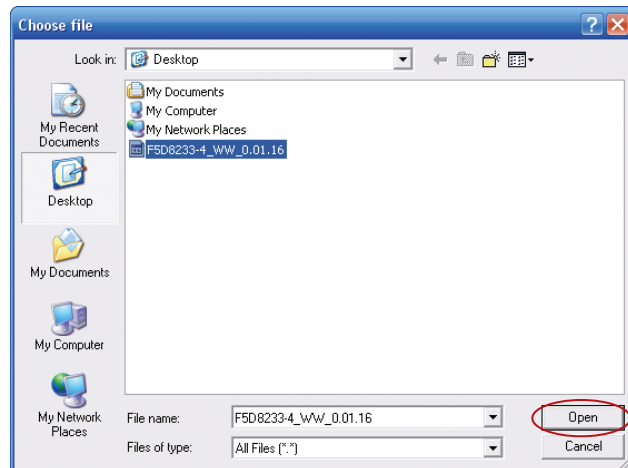
NOTE: Please backup your current settings before updating to a new version of firmware. [Click Here](#) to go to the Save/Backup current settings page.

Firmware Version > 0.01.13 (Apr 14 2007 19:25:14)

Check for New Firmware Version >

Update Firmware >

2. Browse to the firmware file you downloaded. Select the file by double-clicking on the file name.



- The "Update Firmware" box will now display the location and name of the firmware file you just selected. Click "Update".

#### Utilities > Firmware Update

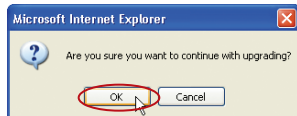
From time to time, Belkin may release new versions of the Router's firmware. Firmware updates contain improvements and fixes to problems that may have existed. Click the link below to see if there is a new firmware update available for this Router.

NOTE: Please backup your current settings before updating to a new version of firmware. [Click Here](#) to go to the Save/Backup current settings page.

Firmware Version > 0.01.13 (Apr 14 2007 19:25:14)

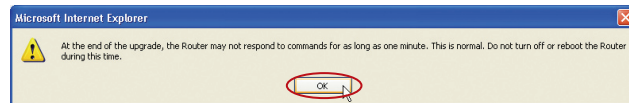
Check for New Firmware Version >

Update Firmware > C:\Documents and Settings\H...



- You will be asked if you are sure you want to continue. Click "OK".

- You will see one more message. This message tells you that the Router may not respond for as long as one minute as the firmware is loaded into the Router and the Router is rebooted. Click "OK".



- A countdown will appear on the screen. When the countdown reaches zero, the Router firmware update will be complete. The Router home page should appear automatically. If not, type in the Router's address (default = 192.168.2.1) into the navigation bar of your browser.