

Connecting your Bluetooth adapter with the Nokia 6600 and PC Suite.



Use with Belkin Bluetooth Software Ver. 1.3.x & 1.4.2.10 Bluetooth adapters F8T001, F8T003, and F8T006-PC.

Before Starting:

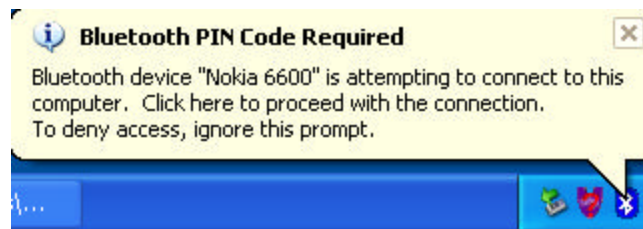
1. Make sure you have the latest Nokia PC Suite software loaded on the computer. The Nokia PC Suite is required to connect to the Nokia 6600.

Note: You just need to download the PC Suite software for your Region. For example. If you purchased your Phone in the US, you must download PC Suite from www.nokiausa.com

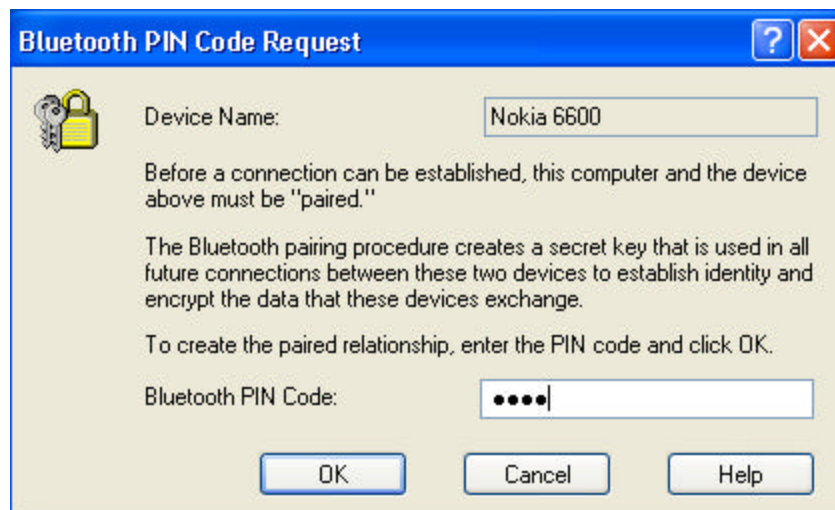
2. Make sure the Belkin Bluetooth software and adapter is installed.

Section: 1 Activating Bluetooth and pairing the phone with the Nokia 6600.

1. Go to the **Main Menu** on you're Nokia 6600.
2. Go to Connect, select Options, and select Open.
 3. Select **Bluetooth**, select Options select Open.
 4. Make sure Bluetooth is set to **ON**.
5. Using your Scroll Key scroll to the next tab to the right in your Bluetooth Menu.
 6. Select **OPTIONS** and select **NEW PAIRED DEVICES**.
 7. Your Phone will search your area for active Bluetooth devices.
 8. Select the Computer you would like to connect your phone to.
 9. Enter a passkey, use **0000** and click **OK**.
10. On your Computer check the taskbar (next to the Clock) for the Passkey prompt.
11. Click on the Bluetooth Passkey prompt or click on the Bluetooth Icon to put in the Passkey.



12. Put in the Passkey (**0000**) and click **OK**.

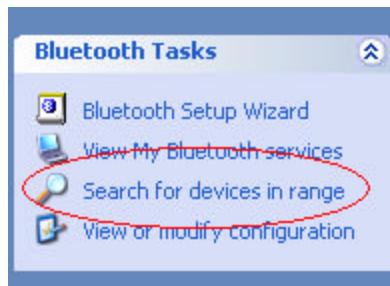


Section: 2 Getting the Com port on the computer

1. On your Computer, open Bluetooth Neighborhood or Double Click on the Bluetooth icon on the Lower right of you're Task bar.



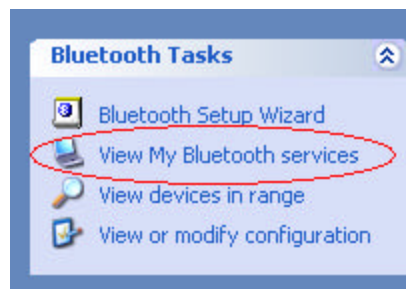
2. On the Bluetooth menu on the left side click on Search for Devices in range or Entire Bluetooth Neighborhood.



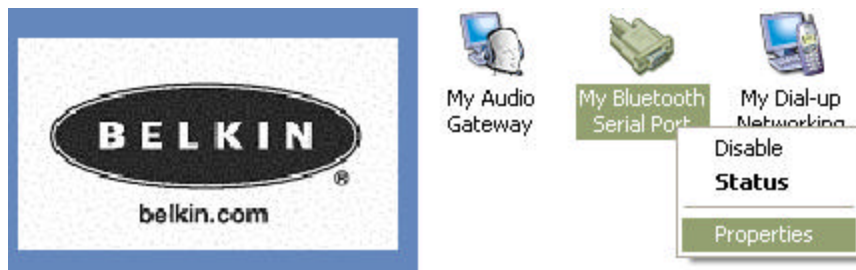
3. Make sure that the Nokia 6600 has a check mark next to it meaning that it's Paired.



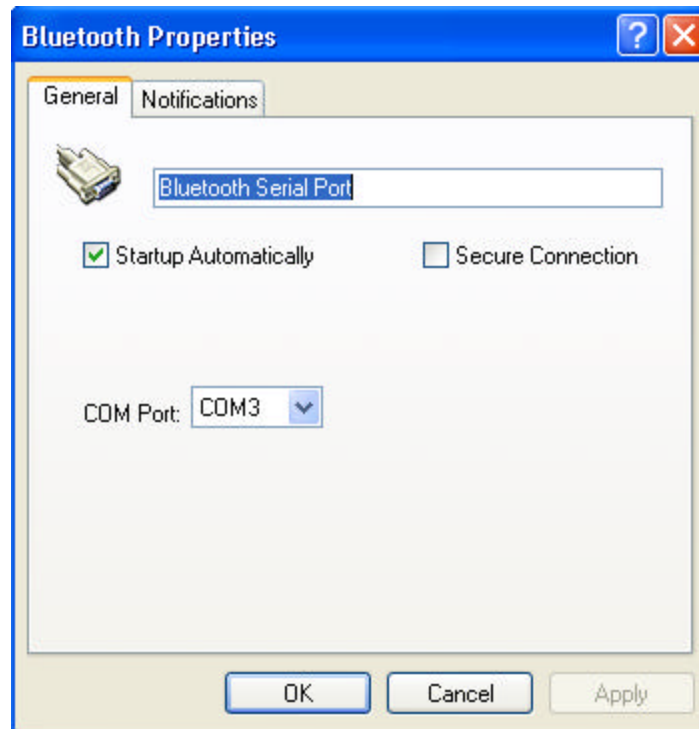
4. On the left side Click on View My Bluetooth Services or My Device.



5. Right click on the Serial Port Icon then go to Properties.



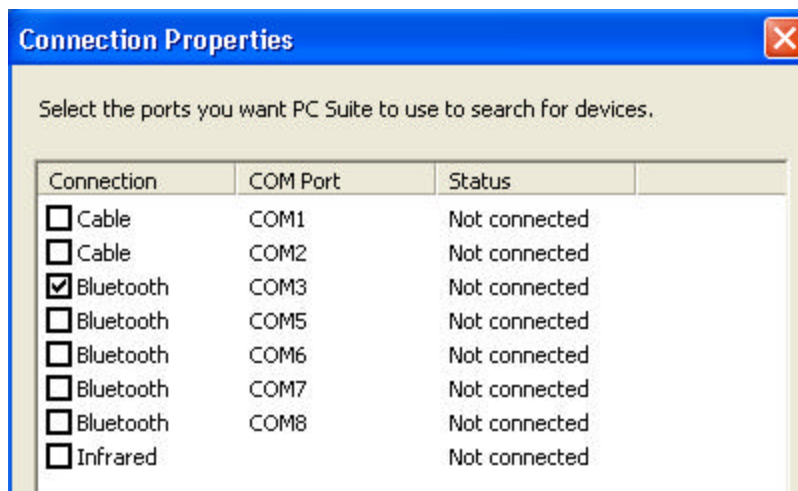
6. Verify the COM port witch is on (Com 3) is selected and that Start up Automatically is check and uncheck Secure Connection and click on Apply.



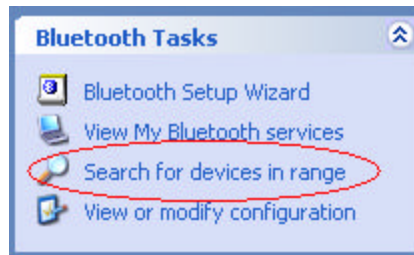
7. Double Click on the M-Router icon (PC Suite) on your taskbar.



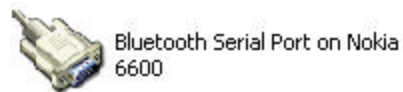
8. Make sure that Com 3 is the only Com port checked as shown in step 6.



9. Go Back to Entire Bluetooth Neighborhood or view devices in Range and double click on the Paired Nokia 6600 Icon.

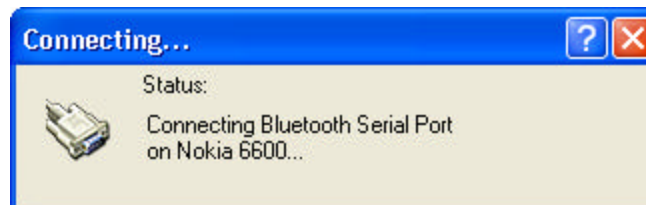


10. Double click on the serial Port icon.

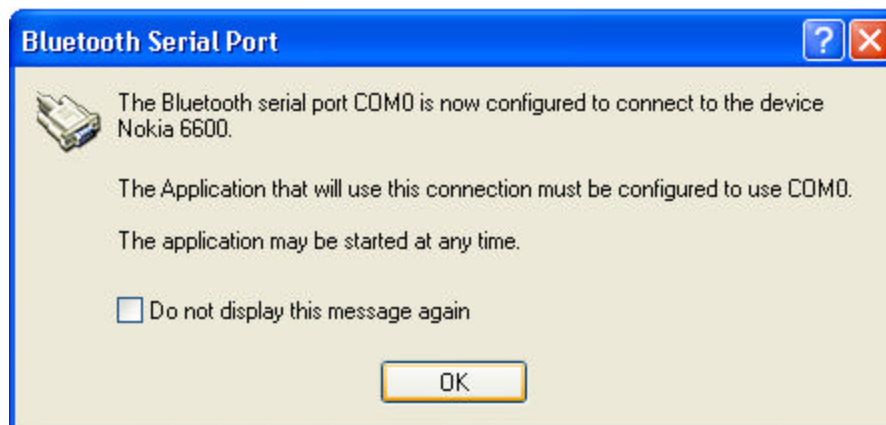


11. Accept the connection on your Phone.

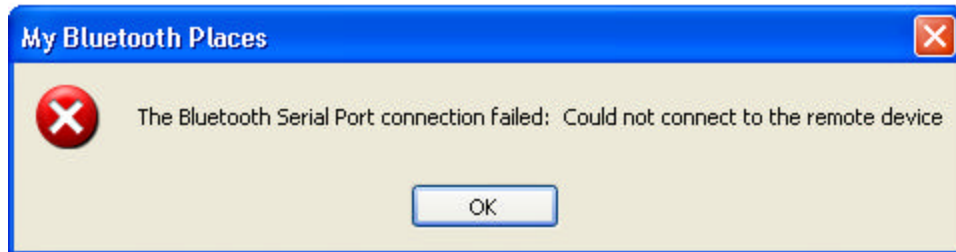
12. It will say Status Connecting to the Bluetooth Serial Port.



13. You may get an error on your computer saying that com 0 is being used. Click OK



13. You may get a connection fail prompt. Click OK



You are now connected to your phone. Verify the connection by double clicking on the M-router icon on the bottom right of you're tool bar. The PC Suite Icon in the system tray will also turn from grayed out to blue and green meaning that is connected.

