

Belkin CAT 5e Patch Panel Installation Guide

**Guide d'installation – Panneau de
raccordement CAT 5e de Belkin**

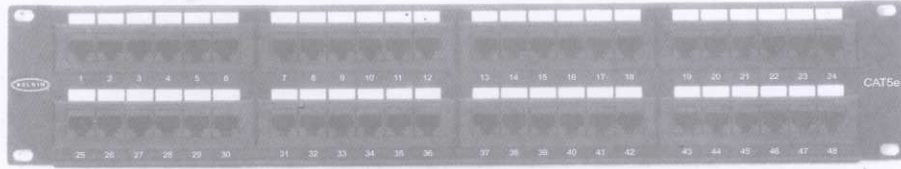
**Guía de instalación para paneles de
conexión categoría 5 de Belkin**

**Guia de instalação do painel de
conexões para CAT 5e da Belkin**

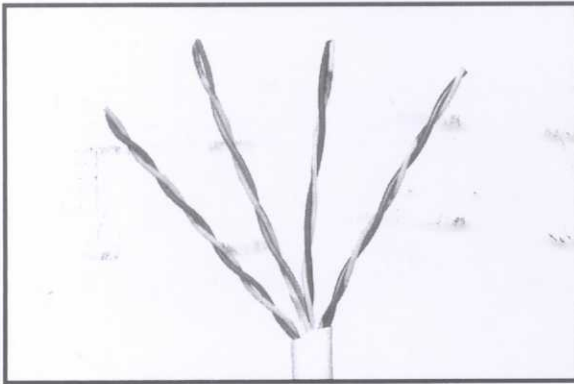
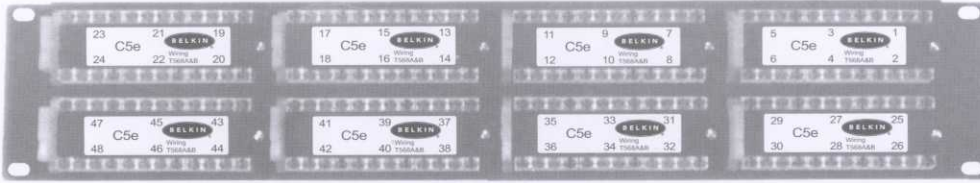
English

This instruction guide is for Belkin F4P338-XX-AB5 (XX=number of ports) series only. To make a complete installation you need CAT 5e premise bulk cable A7L504-XXX (XXX = length) or A7L504-XXX-P for plenum rated cable; or you can use our FastCAT™ Premium cable: A7L604-XXX or A7L604-XXX-P. You will also need a punch down tool (for step 3) F4F335 or you can use our Installation Tool Kit F4F310.

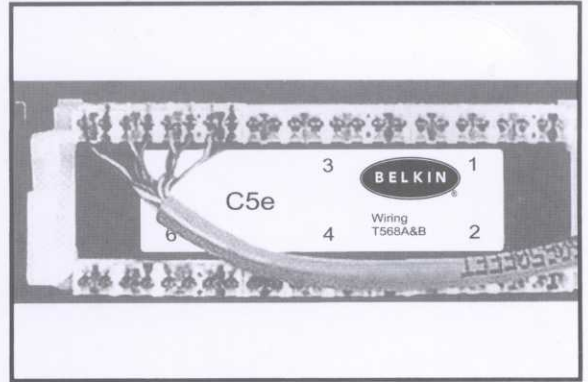
Front View



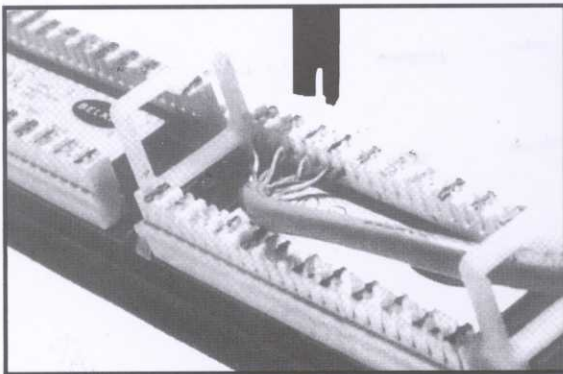
Back View



1 Trim the jacket of the cable back approximately 1" (2.54cm) (Caution: Do not damage conductors). Fan out all four twisted pairs. Note: It is designed for use with a solid conductor premise cable.



2 Following the instruction of Color-Coded Wire Positions, lay conductors into the punch down slots. Keep pairs twisted as close to the punch down slots as possible.



3 Punch down the conductors with a 110 style punch-down tool (Reference Belkin Part# F4F335).

T568A

- 1 WHITE / BLUE STRIPE
- 2 BLUE
- 3 WHITE / GREEN STRIPE
- 4 GREEN
- 5 WHITE / ORANGE STRIPE
- 6 ORANGE
- 7 WHITE / BROWN STRIPE
- 8 BROWN

T568B

- 1 WHITE / BLUE STRIPE
- 2 BLUE
- 3 WHITE / ORANGE STRIPE
- 4 ORANGE
- 5 WHITE / GREEN STRIPE
- 6 GREEN
- 7 WHITE / BROWN STRIPE
- 8 BROWN



belkin.com

Belkin Components

501 West Walnut Street
Compton • CA • 90220 • USA
Tel: 310.898.1100
Fax: 310.898.1111

Belkin Components, Ltd.

Unit 13 • Gatelodge Close • Round Spinney
Northampton • Northants • NN3 8RX • UK
Tel: +44 (0) 1604678300
Fax: +44 (0) 1604678330

Belkin Components B.V.

Diamantlaan 8 • 2132 WV
Hoofddorp • The Netherlands
Tel: +31 (0) 235698765
Fax: +31 (0) 235612694