

Belkin Bulldog Plus

**Shutdown Management Software
for MAC OS X10.1**



Table of Contents

Introduction..... 3

Installing/Removing Bulldog Plus 4

User Interface: Bulldog Plus 5

System Menu 6

UPS Menu..... 8

Service and Support 9

Introduction

Congratulations on your purchase of Bulldog Plus to manage your Uninterruptible Power Supply (UPS). Bulldog Plus is designed to provide end users the ability to take proactive steps to protect their equipment from power related damages. Bulldog Plus allows for automatic shutdowns, scheduled shutdowns and a variety of other features that help you manage your system and its peripheral components.

Bulldog Plus provides detailed information about the UPS and its protected equipment. It is easy to install and program, yet has the necessary features to handle all of one's power requirements.

Bulldog Plus runs in the background from the operating system, and communicates with the UPS in order to ensure that your computer and attached components are protected from any power problems.

Notice:

Due to a limitation in Mac OSX 10.1. the program is unable to turn off the UPS following a Bulldog Plus shutdown of the Mac computer.

Installing/Removing Bulldog Plus

System Requirements:

Belkin Bulldog Plus requires Mac OS X version 10.1.2 or higher.

Installing Belkin Bulldog Plus:

1. Copy the Bulldog.tar to your Mac computer.
2. Double click the Bulldog.tar on Aqua interface or type "tar xvf Bulldog.tar" in the "Terminal" mode to extract it to the Bulldog_Plus_2 directory.
3. There is an installation file Bulldog.pkg in the Bulldog_Plus_2 directory, execute it to begin the installation process. One must restart the computer to load the UPS daemon after installation.

The Belkin Bulldog Plus software is comprised of two modules:

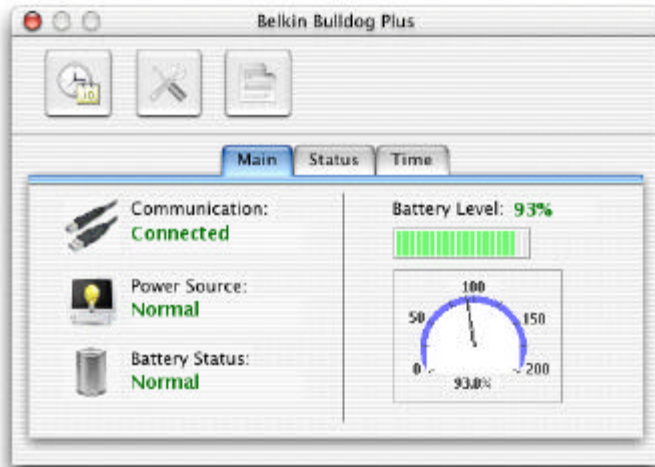
- o A UPS Monitoring Module(upsd), which runs as a background process(daemon) and communicates to the UPS.
 - o A User Interface Module, Bulldog for Aqua Interface, which enables you to configure Belkin Bulldog Plus through the drop down menus and dialog boxes. It also allows you to monitor the UPS through the Main Screen.
4. After installation, Bulldog Plus program files will be located in the directory */Applications/Bulldog*. We suggest you drag the Bulldog icon to the Dock.
 5. Shutdown and reboot your system to start the Belkin Bulldog Plus daemon.

Removing Belkin Bulldog Plus:

1. A shell script file *uninstall.command* is also provided in *Bulldog_Plus_2* directory that allows an administrator to stop all processes and remove all files associated with Bulldog Plus.

User Interface: Bulldog Plus

The Belkin Bulldog Plus Main Screen is the user interface with the program. This screen allows you to monitor the UPS and its display status.



System Menu

The system menu allows you to configure the Belkin Bulldog Plus parameters. When you select the System menu from the Main Menu bar, a drop down menu appears offering you the following menu options:

UPS Property



- a. Battery Low Warning: Allows you to adjust the battery level. If the measured battery level from UPS is lower than the assigned value the voltage will be augmented to the set parameter.
- b. Last Battery Replacement Date: Indicates the last battery replacement date.
- c. Next Replacement Date: Indicates the date of next battery replacement.

Log Management

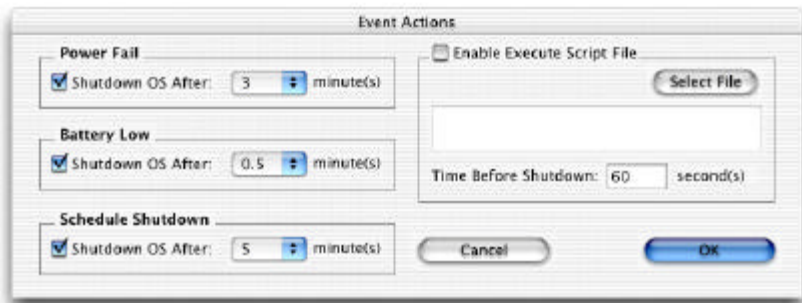
Allows Belkin Bulldog Plus to save or purge logs that do/do not fit the setting created by the user.

Schedule

This function allows you to shutdown your Mac computer according to parameters you set. Settings include day, week or month up to 2 years.

Events/Actions

- a. Power Fail: This option allows you to adjust the OS shutdown delay time taken by Bulldog Plus during a power failure.
- b. Battery Low: This option allows you to adjust the OS shutdown delay time taken by Bulldog Plus during a battery low event.
- c. Schedule Shutdown: This option allows you to adjust the OS shutdown delay time taken by Bulldog Plus when it reaches the scheduled time.
- d. Enable Execute Script File: Allows you to run a shell script before the computer shuts down.



UPS Menu

Quit

Closes the Bulldog Plus, the UPS daemon “upsd” will remain in the memory. This menu allows you to view the event log and stop an ongoing shutdown procedure.

Event Log

This menu offers you the capability of viewing past events.

Cancel Shutdown

Cancel the ongoing shutdown procedure.

Service and Support

Corporate Headquarters

Belkin Corporation

501 West Walnut Street

Compton • CA • 90220-5221 • USA

Tel: 310.898.1100

Fax: 310.898.1111

Customer Service/Sales:

800.2BELKIN

800.223.5546

Technical Support:

310.898.1100 ext. 2263

800.223.5546 ext. 2263

Fax: 310.604.2089

techsupp@belkin.com

belkin.com/support/tech

United Kingdom

Belkin Components, Ltd.

Express Business Park

Shipton Way • Rushden • NN10 6GL

United Kingdom

Tel: +44 (0) 1933 35 2000

Fax: +44 (0) 1933 31 2000

France

Belkin SAS Components
5 rue du Petit Robinson
78 350 Jouy en Josas • France
Tel: +33 (0) 1 34 58 14 00
Fax: +33 (0) 1 39 46 62 89

Germany

Belkin Components GmbH
Hanebergstrasse 2
80637 • München • Germany
Tel: +49 (0) 89 143405 0
Fax: +49 (0) 89 143405 100

The Netherlands

Belkin Components B.V.
Starparc Building • Boeing Avenue 333
1119 PH Schiphol-Rijk • The Netherlands
Tel: +31 (0) 20 654 7300
Fax: +31 (0) 20 654 7349

European Customer Service/Sales:
00 800 223 55 460
eurosales@belkin.com

European Tech Support:
00 800 223 55 460
eurosupport@belkin.com

Australia

Belkin, Ltd.

7 Bowen Crescent • West Gosford • NSW 2250 Australia

Tel: +61 (0) 2 4372 8600

Fax: +61 (0) 2 4372 8603

Tech Support:

Australia Toll Free 1800 666 040

New Zealand Toll Free 0800 441 913

Singapore Toll Free 800 6161 790

belkin.com/anz

China

Belkin Shanghai Representative Office

Suite 31 • 39/F • Plaza 66

1266 Nanjing West Road

Shanghai • 200040 • China

Tel: 8621-62881747

Fax: 8621-62881748

Customer Service/Sales:

china@belkin.com

Tech Support:

800-820-5816