

To install the RIPM, you will need the following:



Remote IP Manager (included)



PS/2 Cable Kit (included)



VGA Cable (included)



Mini-USB Cable (included)



5V DC, 2A Power Supply (included)



PS/2 Keyboard and Mouse, and VGA Monitor



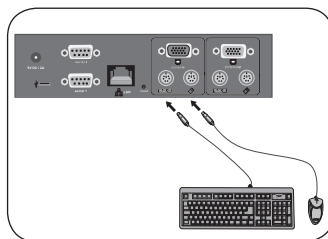
CD with Device-Setup Software (included)

Introduction

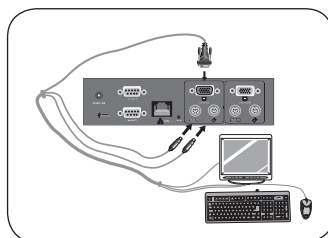
This Quick Installation Guide will guide you through the steps needed to install the OmniView Remote IP Manager (RIPM). If you have any problems during this installation, please refer to the User Manual.

Step 1

Connect the Console



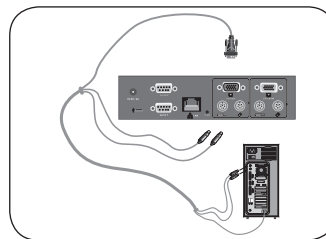
- 1.1 Power down your server or KVM switch.
- 1.2 Connect your PS/2-type keyboard and mouse to the appropriate PS/2 "Console" ports.



- 1.3 Connect the video cable that is attached to your VGA monitor to the "Console" port on the back of the RIPM.

Step 2

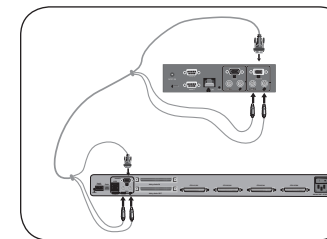
Connect the Computer



- Note:** Skip Step 2 if connecting to a KVM switch.
- 2.1 Using the provided PS/2 Cable Kit, connect one end of the VGA and PS/2 cables to your server.
 - 2.2 Connect the other end to the "CPU/KVM" ports on the back of the RIPM.

Step 3

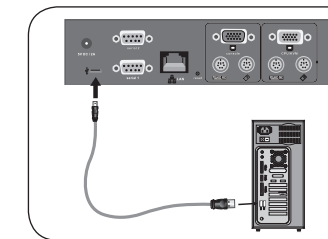
Connect the KVM Switch



- Note:** Skip Step 3 if KVM switch is not available.
- 3.1 Using the provided PS/2 Cable Kit, connect one end of the VGA and PS/2 cables to your server.
 - 3.2 Connect the other end to the "CPU/KVM" ports on the back of the RIPM.

Step 4

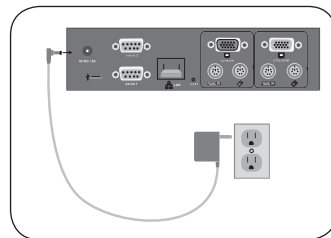
Connect the Mini-USB Cable to Support Virtual Media



- Note:** Steps 1–3 must be completed prior to connecting the Mini-USB Cable for Virtual Media.
- 4.1 Power down your server or KVM switch.
 - 4.2 Connect the USB cable provided from the back of the RIPM to the USB port on the computer.

Step 5

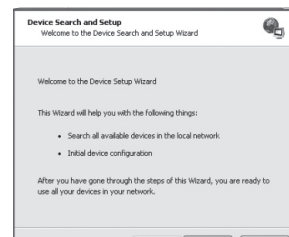
Power Up the RIPM



- 5.1 Connect the included power supply unit into an available power outlet.
- 5.2 Attach the barrel plug into the power jack located on the rear of the RIPM to the power unit.
- 5.3 Turn on your KVM switch. If you do not have a KVM switch, please proceed with powering on your computers.

Step 6

Configure the RIPM



Device-Setup Software

The software contained on the enclosed CD will help to configure the RIPM to your network so that you can access it remotely.

- 6.1 Connect the RIPM to your computer via local network. Start the setup tool from the CD-ROM on the computer where the RIPM is installed.
- 6.2 Follow the setup wizard to configure the RIPM. You will need to have the IP address, subnet mask, and gateway information that will be assigned to the RIPM. You may need to get this information from your network administrator. When the configuration has been completed, you will receive a “successful” notification. Your RIPM is now configured and can be accessed.

- 6.3 This CD-ROM also contains the software that is needed to transfer files between the local and remote computers. This will be covered in more detail in the “Virtual Media” section of the User Manual.

You are now ready to use the RIPM. Please refer to your User Manual for additional information.

BELKIN®

OmniView® Remote IP Manager

BELKIN®

www.belkin.com

Belkin Tech Support
US: 310-898-1100, ext. 2263
800-223-5546, ext. 2263
Europe: 00 800 223 55 460
Australia: 1800 235 546
New Zealand: 0800 235 546

Belkin Corporation
501 West Walnut Street
Los Angeles, CA 90220, USA
310-898-1100
310-898-1111 fax

Belkin Ltd.
Express Business Park, Shipton Way
Rushden, NN10 6GL, United Kingdom
+44 (0) 1933 35 2000
+44 (0) 1933 31 2000 fax

© 2006 Belkin Corporation. All rights reserved. All trade names are registered trademarks of respective manufacturers listed.

BELKIN®

OmniView® Remote IP Manager

Start Here →

