

F5D7050 |



F5D7050 | Hardware Identified



F5D7050 | Version Identification

Version 3xxx and 4xxx have the text "Complies with RSS-210" in small print on the left just above the MAC address,



Version 4xxx has the text "Designed in California" in the bottom right of the sticker. A Version Sticker has also been added



The Version numbers will also be on the underside of the commercial packaging on a separate white sticker.

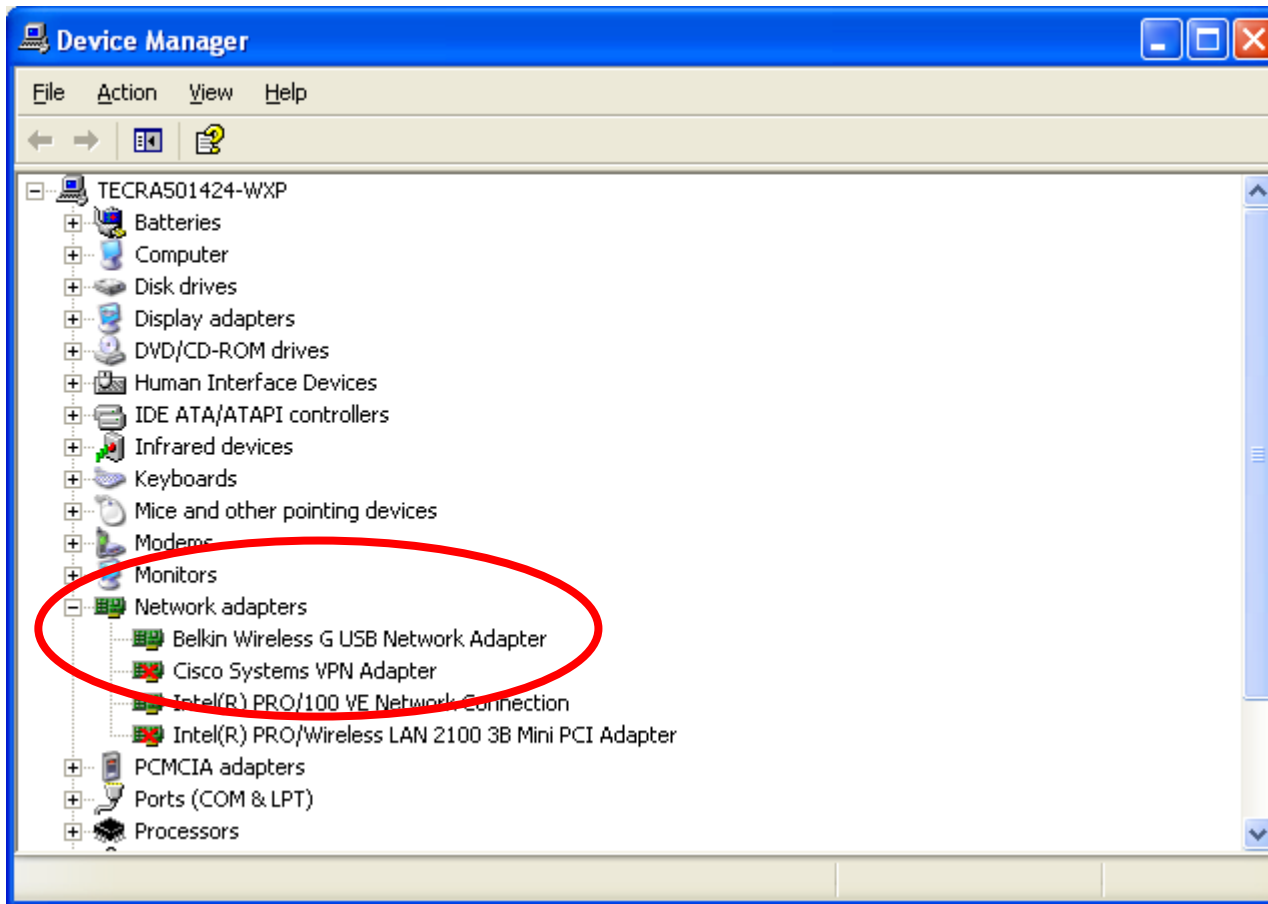
F5D7050 | Hardware Connectivity

The F5D7050 can be connected to a PC or Laptop Computer, either directly or using the extension cable and stand. The extension lead and stand is especially useful for Desktop computers that are located under the desk as it allows the adapter to be positioned on top of the desk or even Monitor for improved wireless connectivity.

The Adapters are USB 2.0 compliant, but are backwards compatible to USB 1.0 and 1.1 standards. Of course it is only when connected to USB 2.0 ports that 54 Mbps can be achieved. Computers offering only USB 1.0 and 1.1 ports will only allow for connections of 11 Mbps.

F5D7050 | Verifying Correct Installation

To check that the Adapter has been installed correctly once the CD-Rom installation process has been followed do the following:



All installed devices will appear in the Computers' Device Manager, regardless of incorrectly or correctly installed so it is always a good first place to check.

To open Device Manager open the 'Start Menu', locate 'My Computer' and using a **right-click** of the mouse select 'Properties' from the sub-menu.

Once the 'System Properties' Window is open select 'Hardware' and then 'Device Manager'.

For **Windows 98 and ME** a 'Device Manager' tab will appear immediately in the 'System Properties'

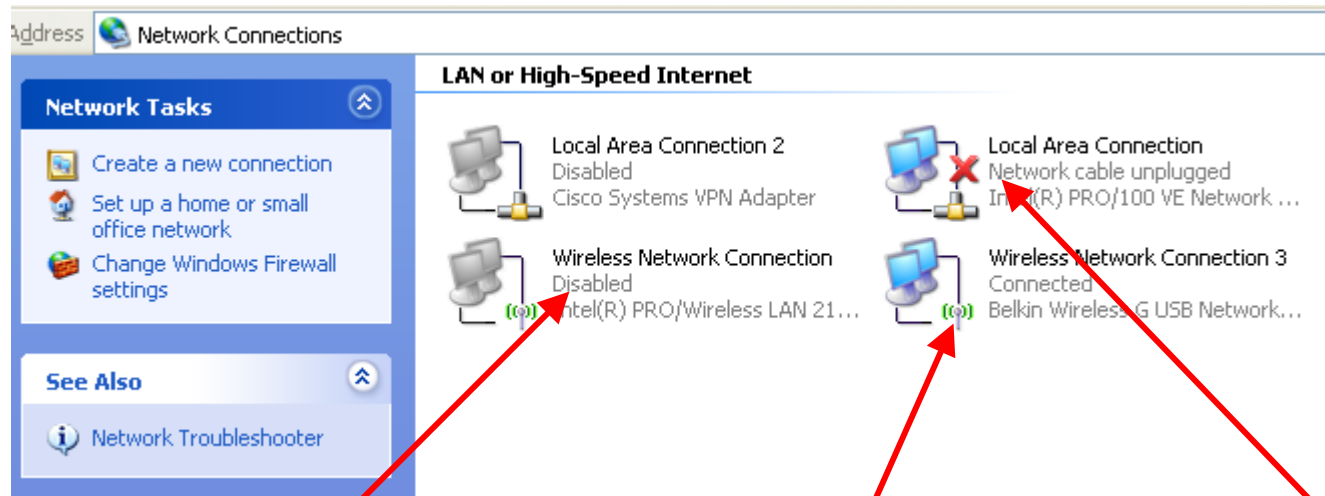
As the Belkin device is a 'Network Adapter' this is the heading that should be checked by clicking on the small '+' sign.

Should there be a problem with the installation a yellow exclamation or question mark will appear next to the entry.

F5D7050 | Verifying Correct Installation

So, the 'Device Manager' tells us what is happening at a Hardware level. Once the **Hardware** is installed using the correct **Drivers** then a '**Network Connection**' is also added to the system. To check this do the following;

Open the '**Start Menu**' then locate and choose '**My Computer**'. Once the 'My Computer' window opens, locate and find '**My Network Places**' in the menu on the left and **Right-Click** it and choose '**Properties**' from the sub-menu. The '**Network Connections**' can now be seen as shown below;



This greyed out icon represents a Network connection that is currently **disabled**

This blue icon represents a Network connection that is **enabled and connected**.

This blue icon represents a Network connection that is **enabled but not currently connected to anything**.

F5D7050 | Using The Adapter

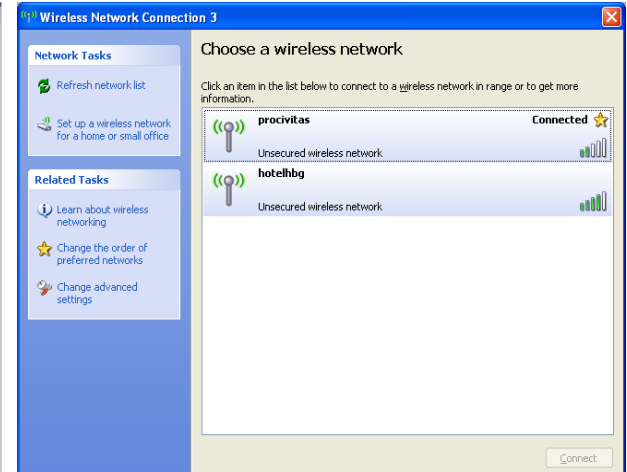
Now that the **Hardware** is installed it can be used by configuring the **Software** for it. The Software that is used may vary.



F5D7050 Ver. 3000 Utility



F5D7050 Ver. 4000 Utility



Windows XP (SP2) WZC Utility

Wireless Network Adapters that are pre-installed will either use a Third-Party WLAN Software or rely upon the Windows Zero Configuration Utility

The important thing to remember is that regardless of the Software they all essentially perform the same function in that they;

Scan for 'Available Wireless Networks'

Allow you to Connect to a Network that has been detected

Allow you to manually configure your own Wireless Network (Peer-To-Peer)

Allow you to set Wireless Security (Encryption)

Allow you to save a chosen wireless Network connection as a 'Preferred Network' or 'Profile'