

Make sure you have the following:



Installation Software CD



Dual-Band Wireless A+G Router



Power Supply



Ethernet Cable

Manual Setup

Users without a CD-ROM drive can go to "Alternate Setup Method" on page 22 in your User Manual.

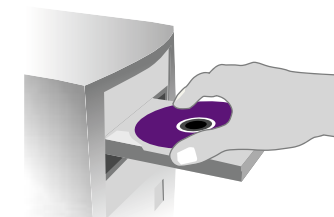
Auto CD Setup →

Users of

- Windows® 98SE
- Windows Me
- Windows 2000
- Windows XP
- Mac OS® 9.2 and X

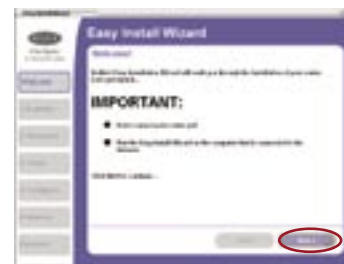
can use the Easy Install Wizard software to set up the Router.

1. Install



Important: Run the Easy Install Wizard Software first!

1.1 Do not connect the Router at this time. From the computer that is directly connected to your high-speed cable or DSL modem, shut down any programs, firewall, and Internet-sharing software applications that are running.



1.2 Windows Users: Insert the Easy Install Wizard software CD into your CD-ROM drive. The Easy Install Wizard screen will automatically appear on your screen within 15 seconds. Click "Next" to start the setup.

Mac OS Users: Insert the CD into your CD-ROM drive. A drive will appear on your desktop called "Belkin Easy Install". Double-click the drive to open it.

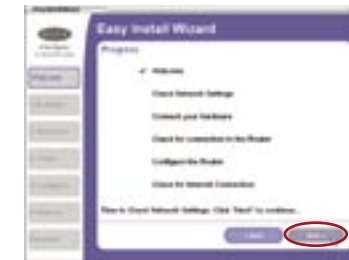
Mac OS 9 users—double-click the program called "Easy Install OS 9".

Mac OS X users—double-click the program called "Easy Install OSX.dmg". The Easy Install Wizard screen will appear. Click "Next" to start the setup.

(click) **Next**

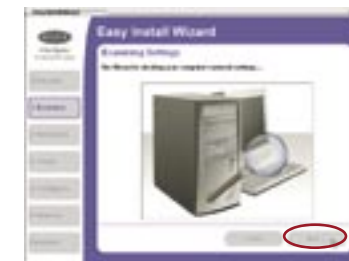
NOTE for Windows Users:

If the Easy Install Wizard does not start up automatically, select your CD-ROM drive from "My Computer" and double-click on the file named "EasyInstall.exe" on the CD-ROM.



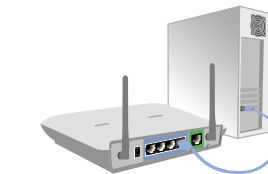
1.3 You will now see the first of a series of progress screens to help you know where you are in the setup process. Click "Next" to continue.

(click) **Next**



1.4 The next screen will tell you that the Wizard is examining your network settings. When the Wizard is finished examining your settings, click "Next".

2. Connect



Connect your Router to your computer and modem



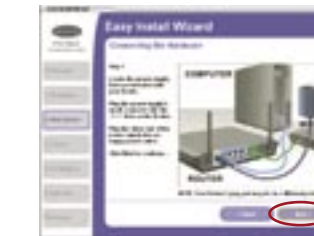
2.1 This step instructs you to locate the cable connected between your modem and the networking port on your computer. Unplug this cable from the computer and plug it into the GREEN port on the Router. Click "Next" to continue. (The color of your modem cable may vary from this setup image.)

(click) **Next**



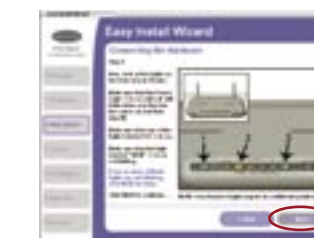
2.2 This step instructs you to locate the BLUE cable that is included with your Router. Plug one end of this cable into ANY one of the BLUE ports on your Router. Plug the other end of the cable into the networking port on your computer. Click "Next" to continue.

(click) **Next**



2.3 This step instructs you to locate the power supply that is included with your Router. Plug the power supply's small connector into the GRAY port on the Router. Plug the power supply into an empty power outlet. Click "Next" to continue.

(click) **Next**



2.4 This step instructs you to look at the lights on the front of your Router. Make sure the appropriate lights are ON. Refer to the Easy Install Wizard software on your computer's screen for more details. Click "Next" to continue.

(click) **Next**

3. Check

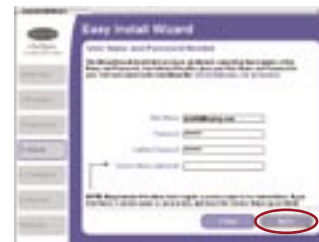


The Easy Install Wizard software will verify your connections



3.1 Once you have completed connecting the Router, the Wizard will check the connection to the Router and then go on to determine what type of Internet connection you have.

(click) **Next**



3.2 If you have a connection type that requires a user name and a password (from a high-speed carrier that may require you to log on to access the Internet), you may see this screen. The Wizard will ask you to type in your user name and password. After entering this information, click "Next".

(click) **Next**



3.3 The Wizard will now transfer all of the configuration information to the Router. This will take approximately one minute. During this time, do not turn off the Router or computer. The Router will restart itself at the end of this step.

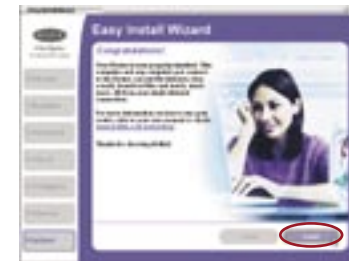


3.4 The Wizard will now check for an Internet connection. This can take a few minutes. The Wizard may not detect a connection right away. If not, it will retry 10 times. The "Connected" light on the front panel of the Router will flash during this time. Please be patient through this process.

Note: If the Easy Install Wizard repeatedly displays an error that it cannot make an Internet connection you may have to power cycle your modem in order to establish an Internet connection. This step will allow the modem to reconfigure itself properly to work with the router. Please follow the instructions below:

Sequence:

1. Unplug the power from modem (supplied by your ISP).
2. Unplug the power from your Belkin router.
3. Wait for five minutes.
4. Reconnect power to the modem.
5. Wait for the modem to power up (about one minute, please refer to the modem's documentation).
6. Reconnect Power to the router.
7. Check your Internet connection.



3.5 When the Internet connection is complete, the Wizard will tell you that you are finished. The "Connected" LED on the front of the Router will be solid GREEN, indicating that the Router is now connected to the Internet.

(click) **Finish**

Begin surfing!



Congratulations! You have finished installing your new Belkin Router. To test your Internet connection, open your browser and visit any website, such as www.belkin.com. Upon connecting to the Internet through your new Router for the first time, a reminder screen for our included Parental Control Web Content Filter will appear. It will reappear every six hours until you click one of the choices (see image below). Please refer to your "Parental Control Web Content Filter" User Manual for detailed information

Updates

Please visit <http://www.belkin.com/networking> for the latest software updates and technical information. If you have any further questions regarding installation of this product, please visit www.belkin.com/networking or contact:

Belkin Tech Support

US: 877.736.5771
310.898.1100 ext. 2263
Europe: 00 800 223 55 460
Australia: 1800 235 546
New Zealand: 0800 235 546
Asia: 800 616 1790

BELKIN®

Dual-Band Wireless A+G Router

BELKIN®

Dual-Band Wireless A+G Router

BELKIN®

www.belkin.com

Belkin Tech Support

US: 877.736.5771
310.898.1100 ext. 2263
Europe: 00 800 223 55 460
Australia: 1800 666 040

Belkin Corporation

501 West Walnut Street
Compton, CA 90220, USA
Tel: 310.898.1100
Fax: 310.898.1111

Belkin Components, Ltd.

Express Business Park, Shipton Way
Rushden, NN10 6GL United Kingdom
Tel: +44 (0) 1933 35 2000
Fax: +44 (0) 1933 31 2000

© 2005 Belkin Corporation. All rights reserved. All trade names are registered trademarks of respective manufacturers listed. Mac OS is a trademark of Apple Computer, Inc., registered in the U.S. and o ther countries.

Start Here →



Quick Installation Guide

