

# BELKIN®

## Parental Control Web Content Filter



### **Belkin Tech Support**

US: 877.736.5771

310.898.1100 ext. 2263

Europe: 00 800 223 55 460

Australia: 1800 666 040

### **Belkin Corporation**

501 West Walnut Street

Compton • CA • 90220 • USA

Tel: 310.898.1100

Fax: 310.898.1111

### **Belkin Components, Ltd.**

Express Business Park • Shipton Way

Rushden • NN10 6GL • United Kingdom

Tel: +44 (0) 1933 35 2000

Fax: +44 (0) 1933 31 2000

### **Belkin, Ltd.**

7 Bowen Crescent • West Gosford

NSW 2250 • Australia

Tel: +61 (0) 2 4372 8600

Fax: +61 (0) 2 4372 8603

### **Belkin Components B.V.**

Starparc Building • Boeing Avenue 333

1119 PH Schiphol-Rijk • The Netherlands

Tel: +31 (0) 20 654 7300

Fax: +31 (0) 20 654 7349

© 2004 Belkin Corporation. All rights reserved. All trade names are registered trademarks of respective manufacturers listed. 54g and the 54g logo are trademarks of Broadcom Corporation in the United States and/or other countries.

# BELKIN®

## Parental Control Web Content Filter

### Manual for Belkin Routers equipped with Parental Control



- **FREE 6 months**
- **Parental Control**
- **Blocks Offensive Web Pages**

#### Note to Parent/Manager

If someone else is setting up your Belkin Router, see page 13 to determine when to name yourself as the Parental Control Manager for setup of Parental Control. The Parental Control Manager is the individual who is setup as the authority/decision-maker over each computer's Internet access and/or restriction.



POWERED BY  
CERBERIAN™

# Table of Contents

<b>1 Introduction</b>	<b>1</b>
<b>2 Setting Up Parental Control</b>	<b>3</b>
Automatic Setup	3
Manual Setup	4
<b>3 Using Parental Control</b>	<b>6</b>
Managing Parental Control Settings	7
Accessing the Parental Control Page	8
<b>4 Modifying your Parental Control Policies</b>	<b>10</b>
<b>5 Using Reporting</b>	<b>11</b>
<b>6 Subscription Renewal</b>	<b>12</b>
<b>7 Note to Parental Control Manager</b>	<b>13</b>
<b>8 Third Party Software Service Release and Disclaimer</b>	<b>14</b>

# Introduction

---

## Parental Control—Web Content Filtering

Your Belkin Router ships with this powerful feature, unique in the marketplace, which gives you the ability to restrict and monitor web surfing from all PCs connected to it. Unlike other products, Belkin Parental Control—Web Content Filtering, requires no software installation on your PCs; everything is internal to the Router. This feature is provided FREE for six months with every Belkin Router purchase. After that, a nominal subscription fee goes into effect, renewable once per year. Unlike other products, Parental Control allows your subscription to cover your entire network with no “per PC” charges.

## How Belkin Parental Control Works

Once Belkin Parental Control is enabled, every web request, or “get”, results in two requests from the Router, one for the site itself, and the second for an approval (Yes or No) from Belkin. The rating is retrieved from our database of over 4 million sites. If the response is “Yes”, then the website is passed to the computer, usually with zero delay. If the response is “No”, then the website will not be displayed and the computer will be shown a Policy Violation screen stating why the website was denied.

If the requested website is within the web filter database, the answer will be instantaneous, and usually will cause no delay. However, if the site requested is not in the database, the web filter will instantly rate the site (give it a real-time rating) and add it to the database. Sites that require real-time ratings sometimes take between 1 and 5 seconds to complete. In most cases, the user will not perceive a delay. Sites that are not in the database represent a small percentage of total sites. Real-time rating is extremely useful for stopping new pornography sites as they appear.

# Introduction

---

## **The Parental Control Manager**

Belkin Parental Control allows for a parent or manager if used in an office, to be designated as the Parental Control Manager. This is a role completely separate from that of the Router Administrator, which is established separately when you set up your Router. It is ideal in situations where a child in the household, or an employee in an office, can act as the Router Administrator, but should be restricted in terms of website access. Once Parental Control is set up, e-mail notifications will automatically be sent to the Parental Control Manager whenever the service is disabled, overridden, or when passwords or e-mail addresses are changed.

Other powerful features of Parental Control are the Parental Control Manager's override and filter-customizing capabilities (explained in detail in the section entitled "Using Parental Control" beginning on page 6.)

**Note:** For an additional subscription fee, reporting is available to show all website usage, allowed or denied, by your network.

# Setting up Parental Control

---

## Automatic Setup

The Router must be connected to the Internet before setting up Parental Control. If you have not set up the Router to connect to the Internet, follow the steps in your Quick Installation Guide to set up the Router before attempting to set up Parental Control.

Automatic setup is the easiest way to get Parental Control up and running.

After setting up the Router to connect to the Internet for the first time, a setup page will automatically be displayed when you open your browser. Follow the steps below.

1. Open a browser on any computer on the network. A page will be displayed prompting you to sign up for Parental Control for six months FREE. If this page does not display, follow the instructions for Manual Setup in the next section of this guide.
2. Select the option that lets you enable Parental Control. If you click “No Thanks”, you will not be asked to sign up again. You can manually enable Parental Control at any time later by following the Manual Setup instructions.
3. You will be prompted to create a password and provide an e-mail address to which change notifications should be sent. Enter the e-mail address you wish to use, and enter a password to be used to manage the Parental Control function. **Note:** This password is different than the password used to manage the Router and should be unique to keep unauthorized users from changing the Parental Control settings.
4. Once you have entered this information, the Parental Control feature is activated. To view or change the settings, follow the directions in the section called “Managing Parental Control Settings.”

1

2

3

4

5

6

7

8

9

10

section

# Setting up Parental Control

---

## Manual Setup

The Router must be connected to the Internet before setting up the Parental Control feature. Follow the steps in the Quick Installation Guide to set up the Router before attempting to set up the Parental Control feature.

1. In your browser, type “192.168.2.1” (do not type in anything else such as “http://” or “www”). Then press the “Enter” key.



2. Click “Parental Control” on the “Utilities” tab. You will now see the Parental Control page.

---

### Parental Control

Belkin's Parental Control protects you and your children/employees from objectionable content on the web. Parental Control comes pre-configured to block many types of web content, but is custom configurable to be more or less restrictive. Any web site can easily be set to be either, always blocked, or always allowed.

**Your Parental Control Subscription is UN-ACTIVATED.**

---

### Reporting

You are currently subscribed to reporting.

---

### Parental Control Sign-up

Belkin's Parental Control protects you and your kids from objectionable content on the web. Belkin's Parental Control is the filter that you set up. Now you can surf the net with your kids even when you are not there.

**You are currently NOT subscribed to the Parental Control service.**

[Subscribe Now](#)

3. Click “Subscribe Now”.

# Setting up Parental Control

---

- 
- 
- 
4. You will be prompted to create a password and provide an e-mail address to which change notifications should be sent. Enter the e-mail address you wish to use, and enter a password to be used by the Parental Control Manager to monitor the Parental Control function.

**Note:** This password is different than the password used to manage the Router and should be unique to keep unauthorized users from changing the Parental Control settings.

- 
- 
- 
- 
5. Once you have entered this information, the Parental Control feature is now activated. To view or change the settings, follow the directions in the section called “Managing Parental Control Settings.”

1

2

3

4

5

6

7

8

9

10

section



# Using Parental Control

---

Now that Parental Control is activated, objectionable websites will now be blocked by the Parental Control feature. If a computer on the network attempts to access a blocked website, a screen will appear in the web browser stating that that page has been “Blocked by Parental Control”. Also, the reason for the block will be stated—for example, “This site was blocked because it is categorized as pornography.”

There are options on the page that will allow you to do one of the following:

- **Disagree:** If you believe that the site has been incorrectly rated, you can click the “Disagree” button. This will cause the site to be re-evaluated within 48 hours.

**Note:** If a particular site continues to be blocked and you do not agree or want it blocked, you can add the site to a list of “Overrides” which will permit access to the site regardless of the rating. See “Change”.

- **Change:** By clicking the “Change” button, you can modify your policy to allow the category or to create an override for the particular site that is blocked. For example, you may decide to allow a particular category of websites that was previously blocked. The Parental Control password is required to make any changes to the policies. For more information on this, see “Modifying your Parental Control Policies” on page 9 in this guide.
- **Override:** You can click the “Override” button and enter the Parental Control password to override the Parental Control feature for a period of one hour. This bypasses all Parental Control features on the computer you are working on, allowing free surfing to any site on the Internet. Parental Control settings will remain in effect on all other computers on your network.  
**CAUTION:** The computer on which you entered the override is now NOT managed by the Parental Control, and will not be restricted for a period of one hour. That means that anyone who uses the Internet from this computer will not be protected by Parental Control until the one-hour period has expired. However, all other PCs will still be filtered.

# Using Parental Control

---

## Managing Parental Control Settings

You can perform the following tasks from the Parental Control page.

- View the number of days remaining on your subscription
- Find links to Reporting and Policy Modification (if subscribed)
- Modify your Parental Control categories
- Change notification e-mail
- Change your Parental Control password
- Disable filtering/enable filtering
- Select whether or not to be notified when someone overrides filtering
- Refresh account settings
- Sign up for and renew your subscription (only when applicable)

**Note:** Changing most of these settings will generate an e-mail to the Parental Control Manager that the change has occurred.

1

2

3

4

5

6

7

8

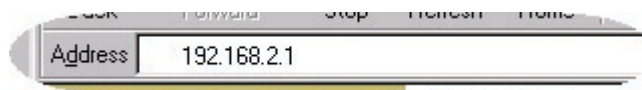
9

10

section

# Using Parental Control

---



## Parental Control

Belkin's Parental Control protects you and your children/employees from objectionable content on the web. Parental Control comes pre-configured to block many types of web content, but is custom configurable to be more or less restrictive. Any web site can easily be set to be either, always blocked, or always allowed.

**Your Parental Control Subscription is **ACTIVATED**.**  
**Your subscription will expire in **214** days.**

[Account information](#)   [Advanced](#)   [Refresh Account information](#)

## Reporting

You are currently not subscribed to reporting.

Click here to see a sample of how reporting works. [Reporting Sample](#)

Click here to sign up for reporting. [Subscribe Now](#)

## Parental Control Status

Turn Parental Control Filter ON and OFF.

**ON**      **Web Filter is currently ON.**

**OFF**

Password:  [Apply](#)

## e-mail Notification

Notify me by e-mail if the Parental Control is overridden.

**ON**      **Email is currently ON.**

**OFF**

Password:  [Apply](#)

## Modify policy

To view or change Default Policies for your Parental Control, click here

[Modify](#)

# Modifying your Parental Control Policies

---

1

2

3

4

section

5

6

7

8

9

10

A list of 59 categories is provided to give a wide array of customizable options for Parental Control. Categories can be blocked or allowed. Blocked categories have been set up by default, so initial use of Parental Control will immediately begin blocking websites that could be objectionable. You can modify the categories at any time you wish. Additionally, any website can be set to always be allowed, or always blocked, regardless of the category.

There are two ways to get to the policy administration site.

1. Every time access to a blocked website is attempted, a Policy Violation screen will be shown. These screens offer a link to the Policy Administration page, and require the Parental Control password be entered for access.
2. There is a link in the Router firmware Parental Control page to the Policy Administration page. The Parental Control password will be required.

After logging into the Policy Administration site, choose one of the following:

1. “Policy Administration” tab to choose which categories to block.
2. “Overrides” tab to enable specific URLs to either be “always blocked” or “always allowed”, regardless of policy settings.
3. “Reporting” tab (if you have purchased a subscription to Reporting). Clicking this tab will allow you to review web-surfing history, both for blocked and allowed sites.

**Note:** If a single computer overrides Parental Control for one hour, or if Parental Control is turned OFF on the Router, web access during these periods will not produce history information in reporting.

# Modifying your Parental Control Policies

---

## Overriding the Parental Control Feature

The override function allows a parent or manager to access websites that children or workers are prevented from accessing. Belkin recommends that Parental Control Managers who frequently override elect not to be notified to reduce e-mail traffic.

## How the Override Function Works

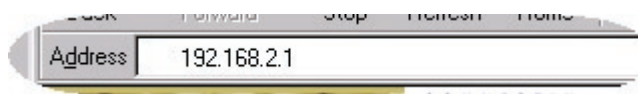
With filtering turned on, each policy-violation screen provides a prompt for override. If you wish to override filters and surf without restrictions and if you have the Parental Control password, you can override the Parental Control feature temporarily. When an override is requested, the Router allows ONLY the requested PC to surf unrestricted for one hour. All other PCs will remain filtered. Overriding is only permitted from one PC at a time.

Filtering will resume automatically after a period of one hour. If you wish to continue the override, you will need to reenter the Parental Control password. (Parental Control will prompt for the password every hour.)

## Enabling/Disabling the Parental Control Feature

The Parental Control Administrator can choose to enable or disable filtering as desired during the FREE six-month period or annual subscription.

8. In your browser, type “192.168.2.1” (do not type in any lead characters, such as “http://” or “www”). Then press the “Enter” key.
9. Click “Parental Control” on the “Utilities” tab. You will now see the Parental Control page.



10. Click “Disable” or “Enable” and enter your password.  
**Note:** When filtering is disabled in this way, filtering will be disabled on all PCs connected to the Router.

# Using Reporting

---

If you opt to subscribe to Parental Control's Reporting feature (an extra fee is required), you will be able to access reports in two ways.

**Note:** The Reporting screen is a tab on the Change Policy screen discussed previously.

1. Every time access to a blocked website is attempted, a Policy Violation screen appears. These screens offer a link to the Policy Administration page, and require the Parental Control password to be typed in for access.
2. There is a link in the Router's Parental Control page to the Reporting page, and access to the Reporting page requires the Parental Control password.

After logging into the Reporting site, the Parental Control Manager can click the Reporting tab to review web-surfing history, both for blocked and allowed sites. **Note:** If a single computer overrides Parental Control for one hour, or if Parental Control is turned OFF on the Router, web access during these periods will not result in history information in Reporting.

## Advanced

Clicking the Advanced tab will allow the user to modify the default timeout settings. When using Parental Control, the Router checks each web request against the user's Internet policy. Generally, this rating takes less than one second to obtain. However, if the rating site is temporarily down, or if a previously un-rated website takes longer than usual to load and be dynamically rated, the Router will timeout after 10 seconds. Default settings dictate to block all sites on timeouts, however, the user can choose to allow all sites after timeouts.

## Refresh

This feature is only used if the Parental Control settings on the Router (e.g., expiration date) become corrupted. Pressing this button causes the Router to request an updated setting from Belkin.

1

2

3

4

5

6

7

8

9

10

section

# Subscription Renewal

---

**Automatic:** When your Parental Control is 15 days from expiration, the Router will begin to prompt once per day for renewal. Additionally, an e-mail will be sent stating that it is time to renew, to avoid service disruption. If you elect to renew, you will be prompted to enter your credit card information through Belkin's secure website.

**Manual:** You can log in to the advanced user interface of the Router (see manual), select "Parental Control", and select "Renewal". You will be prompted to enter your credit card information through Belkin's secure web site. Renewal is not possible until 15 days before expiration.

# Note to Parental Control Manager

---

Belkin Parental Control uses a password (different than the Router Administrator password) to control policies for web blocking on the Internet. It also uses an e-mail address to notify the Parental Control Manager of overrides or attempts to bypass content filtering. The first time a PC tries to surf following the Router's connection to the Internet, the user will be prompted to sign up for Parental Control.

During setup (see setup section for a more detailed description), the user will be prompted to enter an **email** and **password**. **Be careful with this password!** It will allow your users (children or employees) to bypass the Parental Control—Web Content Filter. Additionally, the e-mail address you enter will be the one to which notices will be sent—so be sure to choose a secure e-mail account so that unauthorized users can't delete warning messages.

In the event that a child or employee has set himself up as the Router Administrator and has already bypassed the Parental Control setup page, you can easily establish yourself as the Parental Control Manager. You can do this by initiating setup from the Router firmware page.

Even if someone else has already signed up to Parental Control, you can establish yourself as the Parental Control Manager by changing the password and email address in the Router's firmware page (see Managing Parental Control settings).

1

2

3

4

5

6

7

8

9

10

section



# Third Party Software Service Release and Disclaimer

---

## **THIS AGREEMENT LIMITS YOUR RIGHTS YOU MUST READ THIS AGREEMENT BEFORE YOU SETUP THIS SOFTWARE**

This THIRD PARTY SOFTWARE AND SERVICE RELEASE AND DISCLAIMER (the “**Agreement**”), is a legal agreement between you (an individual) and BELKIN CORPORATION (“**BELKIN**”), regarding the enclosed third-party parental control web content filter (the “Software”) that BELKIN has provided to you free of charge. By selecting the box at the bottom of the Release and Disclaimer page in the Software setup and clicking the “Next” button you agree to be bound by the terms of this Agreement. **IF YOU DO NOT WISH TO BE BOUND TO THE TERMS OF THIS AGREEMENT, PLEASE DO NOT SELECT THE BOX AT THE BOTTOM OF THE RELEASE AND DISCLAIMER PAGE AND DO NOT PROCEED WITH THE SOFTWARE SETUP.**

**I. DISCLAIMER.** You acknowledge that the Software is solely a third-party product that has not been manufactured by BELKIN. TO THE MAXIMUM EXTENT PERMITTED BY APPLICABLE LAW, AND EXCEPT AS EXPRESSLY SET FORTH HEREIN, THE SOFTWARE IS PROVIDED “AS IS”, AND BELKIN DOES NOT MAKE AND SPECIFICALLY DISCLAIMS, ALL EXPRESS AND IMPLIED WARRANTIES OF EVERY KIND RELATING TO THE SOFTWARE AND/OR USE OF THE SOFTWARE (INCLUDING, WITHOUT LIMITATION, ACTUAL AND IMPLIED WARRANTIES OF MERCHANTABILITY AND FITNESS FOR A PARTICULAR PURPOSE, AND NON-INFRINGEMENT), AS WELL AS ANY WARRANTIES THAT THE SOFTWARE (OR ANY ELEMENTS THEREOF) WILL ACHIEVE A PARTICULAR RESULT, OR WILL BE UNINTERRUPTED OR ERROR-FREE. SPECIFICALLY, AND WITHOUT LIMITING THE FOREGOING, YOU ACKNOWLEDGE THAT BELKIN HAS NOT MADE ANY REPRESENTATIONS OR WARRANTIES WITH RESPECT TO THE SOFTWARE OR THE FUNCTIONALITY THEREOF.

**II. LIMITATION OF LIABILITY.** TO THE MAXIMUM EXTENT PERMITTED BY APPLICABLE LAW, IN NO EVENT SHALL BELKIN BE LIABLE UNDER ANY THEORY OF LIABILITY FOR ANY DAMAGES OF ANY KIND, INCLUDING, WITHOUT LIMITATION, INDIRECT, INCIDENTAL, SPECIAL, OR CONSEQUENTIAL DAMAGES OF ANY KIND (INCLUDING, WITHOUT LIMITATION, ANY SUCH DAMAGES ARISING FROM BREACH OF CONTRACT OR WARRANTY OR FROM NEGLIGENCE OR STRICT LIABILITY), INCLUDING, WITHOUT LIMITATION, LOSS OF PROFITS, REVENUE, DATA, OR USE, OR FOR INTERRUPTED COMMUNICATIONS OR DAMAGED DATA, OR FROM ANY DEFECT, ERROR, OR IN CONNECTION WITH YOUR ACQUISITION OF SUBSTITUTE GOODS OR SERVICES OR MALFUNCTION OF THE SOFTWARE, EVEN IF BELKIN OR ANY OTHER

# Third Party Software Service Release and Disclaimer

---

PERSON HAS BEEN ADVISED OR SHOULD KNOW OF THE POSSIBILITY OF SUCH DAMAGES.

**III. RELEASE.** IN CONSIDERATION OF YOUR RECEIPT AND USE OF THE SOFTWARE YOU HEREBY FOREVER GENERALLY AND COMPLETELY RELEASE AND DISCHARGE BELKIN AND ITS RESPECTIVE SERVANTS, AGENTS, DIRECTORS, OFFICERS, SUCCESSORS, ASSIGNS, EMPLOYEES, PARENT CORPORATIONS, SUBSIDIARY CORPORATIONS, AFFILIATES, CONSULTANTS, ATTORNEYS, REPRESENTATIVES, INSURERS, AND ALL OTHERS, OF AND FROM ANY AND ALL CLAIMS AND DEMANDS OF EVERY KIND AND NATURE AT LAW, IN EQUITY OR OTHERWISE, KNOWN AND UNKNOWN, SUSPECTED AND UNSUSPECTED, DISCLOSED AND UNDISCLOSED, FOR DAMAGES ACTUAL AND CONSEQUENTIAL, PAST, PRESENT AND FUTURE ARISING FROM OR RELATED TO THE SOFTWARE.

**IV. INVALIDITY OF PROVISIONS.** If any provision of this Agreement shall be or become invalid, illegal, or unenforceable in any respect, the validity, legality, and enforceability of the remaining provisions contained herein shall not be affected thereby.

**V. GENERAL PROVISIONS.** This Agreement shall bind the heirs, personal representatives, successors and assigns of each party, and inure to the benefit of each party, and all servants, agents, directors, officers, successors, assigns, employees, parent corporations, subsidiary corporations, affiliates, consultants, attorneys, and insurers thereof. This Agreement shall be deemed entered into in the State of California. This Agreement and the rights and obligations of the parties hereunder shall be governed by, and construed in accordance with, the laws of the State of California without regard to conflicts of laws principles. In addition, this Agreement will not be governed or interpreted in any way by referring to any law based on the Uniform Computer Information Transactions Act (UCITA), even if that law has been adopted in California, and the United Nations Convention on Contracts for the International Sale of Goods is hereby excluded. Each party to this Agreement irrevocably (a) submits to the exclusive jurisdiction of any state or federal court located in Los Angeles County, California in litigating any action or proceeding arising out of or relating to this Agreement or the transactions contemplated hereby, and (b) agrees that any such action or proceeding may be litigated only in such courts. Each party to this Agreement waives, to the fullest extent permitted by law, the defenses of lack of personal jurisdiction, inconvenient forum, and improper venue to the maintenance of any such action or proceeding. In the

1

2

3

4

5

6

7

8

9

10

section

## Third Party Software Service Release and Disclaimer

---

event that any party to this Agreement brings an action to enforce any of the terms of this Agreement, the prevailing party in such action shall be entitled to an award of attorneys' fees, experts' fees, and costs incurred in connection therewith. This Agreement contains the entire agreement between the parties hereto and constitutes the complete, final and exclusive embodiment of their agreement with respect to the subject matter hereof. The terms of this Agreement are contractual and not a mere recital. This Agreement is entered into without reliance upon any promise, warranty or representation by any party or any representative of any party other than those expressly contained herein, and each party has carefully read this Agreement and agrees to same of its own free will.