

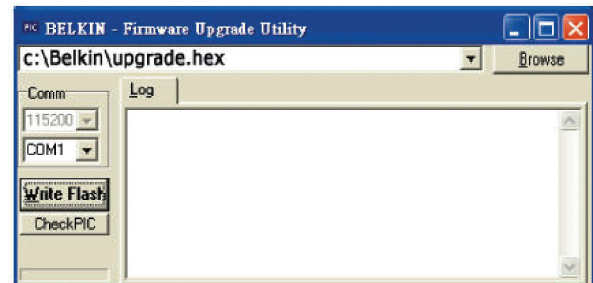
For models: **F1DA104Z, F1DA108Z, F1DA116Z, F1DA104Q, F1DA108Q, and F1DA116Q**



1. Power off the PRO3 KVM Switch by removing the power.
2. Connect the serial flash cable's RJ11 end to the PRO3 unit and the DB9F end to an available serial (COM) port on the computer.
3. Note that there are two flash modes. Please make sure you select the correct firmware (FW) upgrade file and set the DIP switch in the correct mode position.

DIP Switch		Function
1	2	
ON	ON	Normal Run Operation mode
OFF	ON	Upgrade Main KVM CPU mode
ON	OFF	Upgrade Daisy-Chain CPU mode
OFF	OFF	Reserved (not used)

4. Run the "BELKIN Firmware Upgrade Utility.exe". Click "Browse" to select the FW upgrade file. Make sure the COM-port setting matches the port where the serial flash cable is connected.
5. Apply power to the PRO3 unit. The KVM Switch will enter flash-upgrade mode.



6. Click "Write Flash" to start the upgrade process. It takes about 10 seconds. You should see "WRITE OK" displayed if the upgrade was successful.
7. Disconnect the serial flash cable, power off the PRO3 unit, set the DIP switch back to the Normal Run Mode position "ON, ON", and then power on the PRO3 unit. The unit should now be running on the new firmware. The OSD will show the FW version in the bottom right corner.

