

Integration Series Open-Frame Racks

Mount and organise IT networking equipment

The Integration Series 2-Post and 4-Post Racks offer a reliable, and economical solution for mounting and securing networking equipment. Engineered to be sturdy, yet easy to install, our open-frame racks are ideal for increasing vital rack space for network upgrades, additions and installations.

With an industry leading weight capacity of 2,200 pounds (997.90 kg), our 4-post racks are designed to carry heavy loads and will support multiple network servers, storage devices, and UPSs. Use our practical 2-post racks to mount lighter networking equipment, such as patch panels, switches, routers, and cabling.

Benefits

- Open-frame design allows for excellent access to equipment and high airflow
- Easy one-person assembly (product ships unassembled)
- Front and rear numbered RMU markings make installation fast and easy
- High quality construction offering industry leading weight capacities
- Compatible with 19-inch rack mountable equipment (EIA 310-D compliant)
- Baseplate holes enable floor anchoring to stabilise and secure rack
- Includes screws to mount equipment (RK4000ek also includes cage nuts)
- Belkin Lifetime Warranty



RK4000ek
4-Post Rack 43U



RK2000ek
2-Post Rack 45U

Technical Specifications

	4-Post Rack 43U RK4000ek	2-Post Rack 45U RK2000ek	2-Post Rack 24U RK2001ek
Weight:	63.1 lbs (28.60 kg)	26.0 lbs (11.80 kg)	19.0 lbs (8.63 kg)
Height:	82.7 inches (210.11 cm)	84.0 inches (213.36 cm)	48.0 inches (121.92 cm)
Width:	20.7 inches (52.58 cm)	20.3 inches (51.59 cm)	20.3 inches (51.59 cm)
Depth:	29.5 inches (74.96 cm)	14.0 inches (35.56 cm)	14.0 inches (35.56 cm)
Rack Units:	43U	45U	24U
Rack Size:	19 inch	19 inch	19 inch
Weight Capacity:	2200 lbs. (997.90 kg)	1000 lbs. (453.59 kg)	1000 lbs. (453.59 kg)

Part Number	Description	UPC
RK4000ek	Integration 4-Post Rack 43U	7-22868-58118-6
RK2000ek	Integration 2-Post Rack 45U	7-22868-58116-2
RK2001ek	Integration 2-Post Rack 24U	7-22868-58117-9

Integration Series Open-Frame Racks

Mount and organise IT networking equipment

Accessories

Customise your rack with a broad range of accessories, including cable managers, shelves, filler panels, patch panels, mounting hardware and structured cabling.

Cable Management

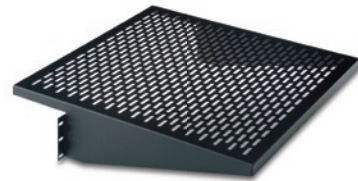
Route and organise cables between equipment. Available in single and doubled-sided versions and in various sizes.



1U Horizontal Cable Manager
RK5016ek

Shelves

Mount non-rack-mountable equipment on shelf. Choose from fixed and sliding versions in several sizes.



Fixed Shelf Vented 18-inch
RK5023ek

Filler Panels

Fill empty rack spaces and direct airflow with our filler panel kits.



2U Filler Panels (set of 2)
RK5032ek

Patch Panels

Patch and arrange LAN connections. Available in 12, 24, 48, 72 and 96 port versions.



24-Port CAT5e Patch Panel
F4P338-24-AB5

Mounting Hardware

Mount and stabilise equipment with screws and anchor kits.



M6 Cage Nuts and Screws
RK5034ek (for use with RK4000ek)

Structured Cabling

Reliably connect equipment with Belkin bulk and patch cabling.



CAT5e Solid Horizontal Cable, 250M (not pictured)
A7L504uk250M-BL