

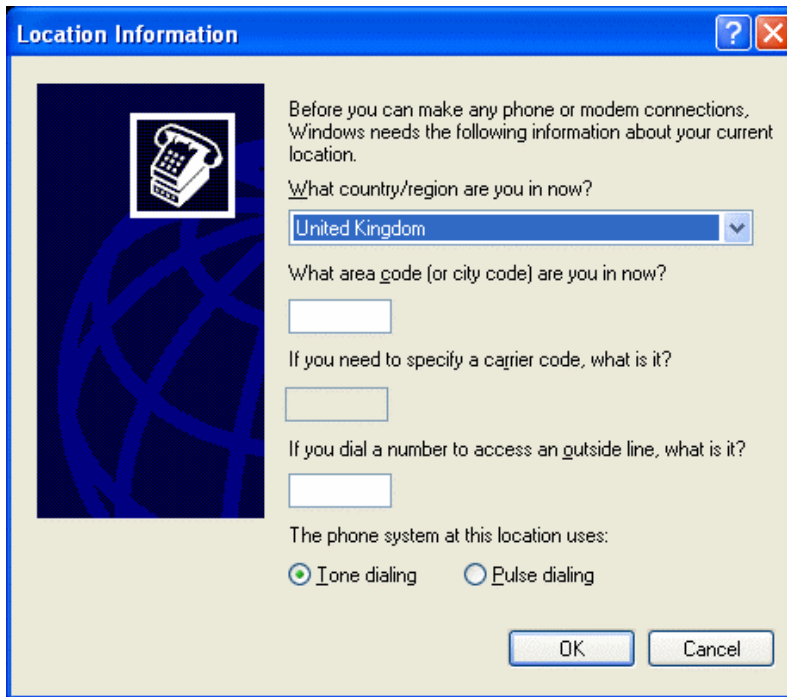
F1DE101G | Configuration Via Serial

On a computer that has HyperTerminal Services software installed, connect the provided DB9 Serial cable by attaching one end to your Computer and the other end to the port labelled 'Serial 1' on the RIPC.

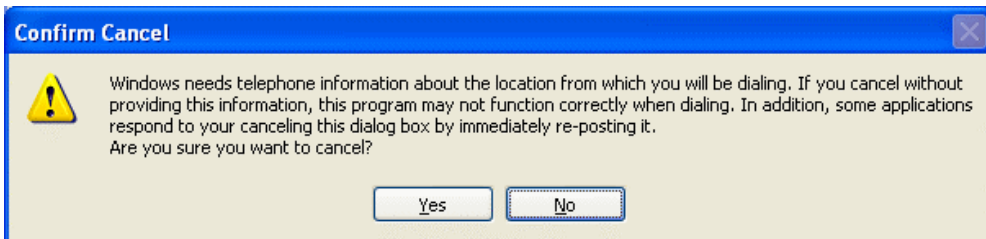
Open the Hyper Terminal software and use the following parameters;

Parameter	Value
Bits/Second	115200
Data Bits	8
Parity	No
Stop Bits	1
Flow Control	None

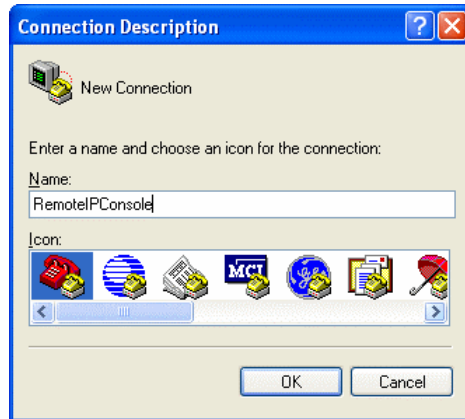
You will now be able to set your networking configuration on the RIPC. Open the Hyper Terminal software. You will be prompted to enter your location details and area code



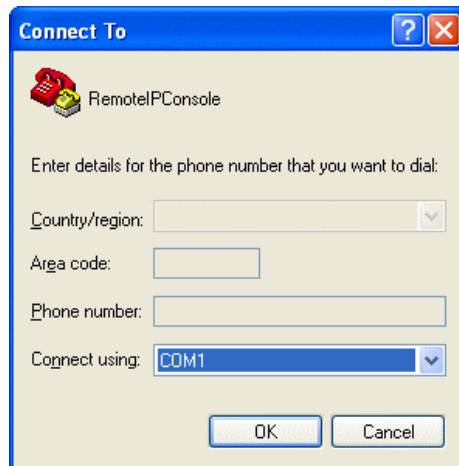
You can cancel out of this if need be, but it will pop-up every time you use Hyper Terminal if you do cancel.



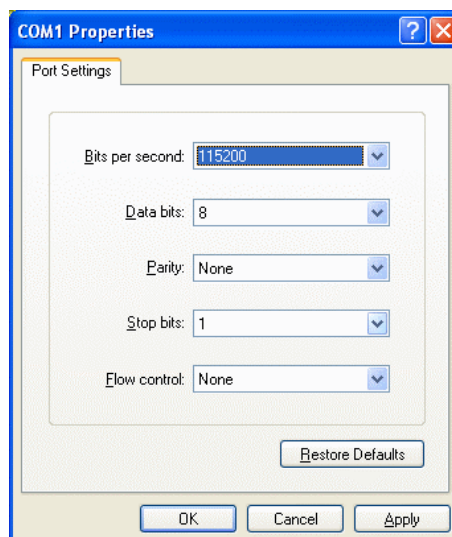
Once the location details have been sent Hyper Terminal will prompt for a description of the new connection as follows;



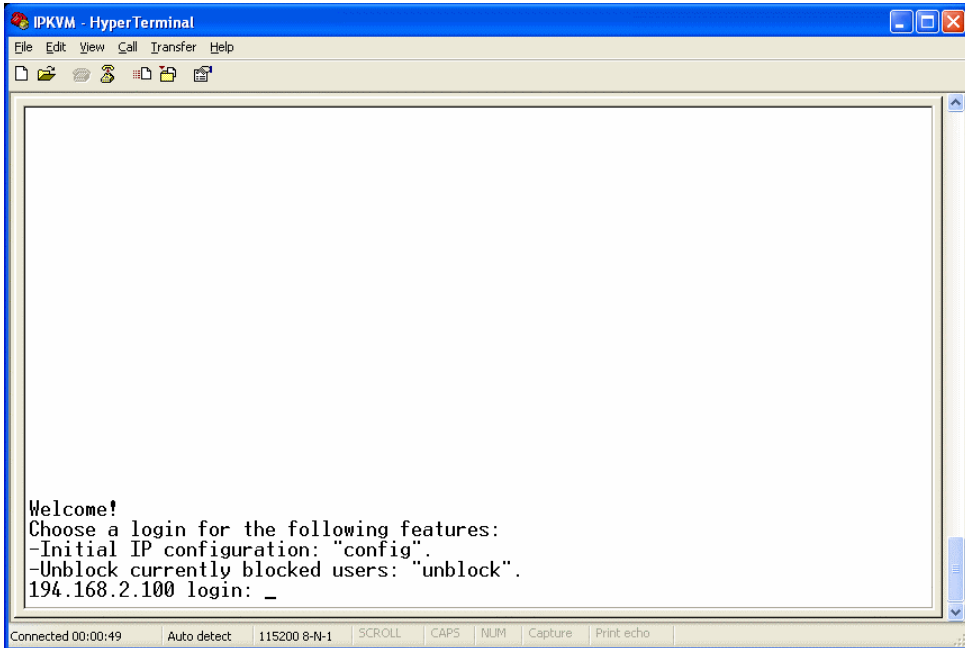
Once entered, the next step will be to set the Com Port which is usually the default 'COM1'



The Hyper Terminal set-up will then prompt for the Serial Line Parameters which should be entered as per the manual;

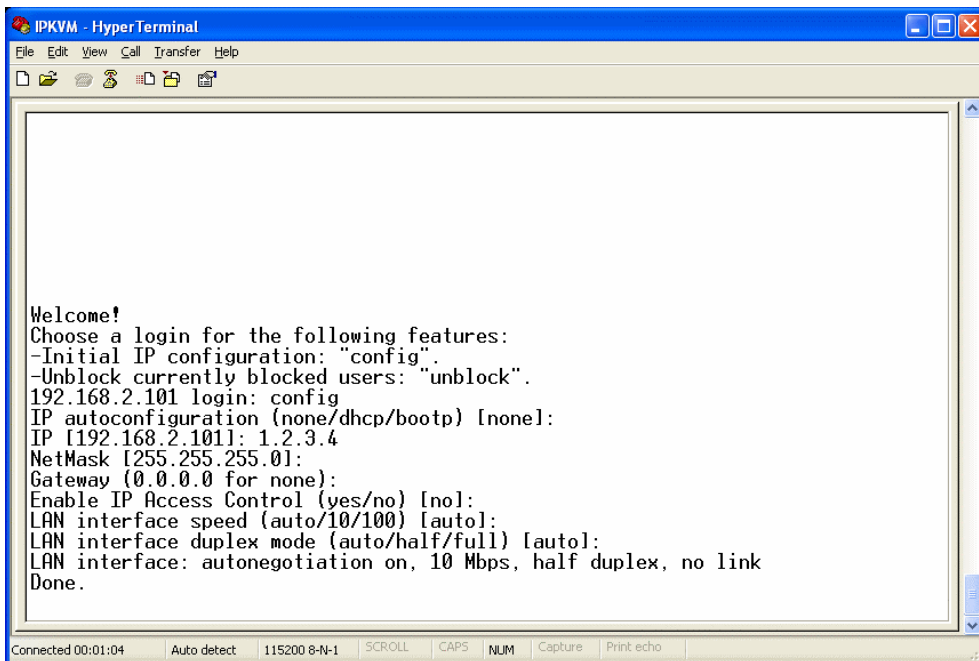


Once the serial line parameters have been set and HyperTerminal forms a connection to the attached RIPC unit you will get the following screen;



```
IPKVM - HyperTerminal
File Edit View Call Transfer Help
Welcome!
Choose a login for the following features:
-Initial IP configuration: "config".
-Unlock currently blocked users: "unlock".
194.168.2.100 login: _
Connected 00:00:49 Auto detect 115200 8-N-1 SCROLL CAPS NUM Capture Print echo
```

By typing 'config' at the prompt the RIPC unit can be configured with new Network Settings. The optimum settings are shown below. These conform to the instructions in the manual.



```
IPKVM - HyperTerminal
File Edit View Call Transfer Help
Welcome!
Choose a login for the following features:
-Initial IP configuration: "config".
-Unlock currently blocked users: "unlock".
192.168.2.101 login: config
IP autoconfiguration (none/dhcp/bootp) [none]:
IP [192.168.2.101]: 1.2.3.4
NetMask [255.255.255.0]:
Gateway (0.0.0.0 for none):
Enable IP Access Control (yes/no) [no]:
LAN interface speed (auto/10/100) [auto]:
LAN interface duplex mode (auto/half/full) [auto]:
LAN interface: autonegotiation on, 10 Mbps, half duplex, no link
Done.
Connected 00:01:04 Auto detect 115200 8-N-1 SCROLL CAPS NUM Capture Print echo
```

Should the Hyper Terminal connection for any reason not be formed, try unplugging the serial cable from the RIPC unit and then plugging back in again. If this still meets with no success and all connections have been verified and a new connection also attempted, the RIPC would most likely need to be replaced.